



*Quality Replacement Parts*



## Table of Contents

---

○ Terms .....	ii
○ Index by Category .....	iii
○ Parts Listing .....	1
○ Index by Part Number .....	71
○ Index Button Cross Reference .....	81

## TERMS AND CONDITIONS OF SALE

### SALES POLICY:

It is our policy to sell the OEM and wholesale level only. Possession of this book does not constitute an offer to sell. Prices are subject to change without notice. All orders will be shipped and invoiced at the prevailing price at the time of shipment. We reserve the right to adjust orders to standard package quantities unless otherwise stated on purchase order. All orders are subject to acceptance by Barry E. Walter Sr. Co., 2550 E. Platte Ave., Fort Morgan, CO 80701. The Minimum billing is \$50.00. Drop shipments will carry a 10% surcharge and must meet minimum requirements.

### TERMS:

3% 20, Net 30. Payment must be received within 20 days of the invoice date for the discount to be allowed. Any amount past due is subject to finance charge on the total past due balance in accordance with the truth-in-lending act. Invoices not paid according to the terms are subject to MONTHLY SERVICE CHARGES of 1 1/2% per month (which is an ANNUAL PERCENTAGE RATE OF 18%). Returned checks (NSF) will be charged a \$25.00 handling charge. Prices are subject to any federal, state, sales use or other tax applying, unless exemption certificates are on file with Barry E. Walter Sr. Co. Cancellation of regular merchandise orders can be authorized only by Barry E. Walter Sr. Co. Handling charges may be assessed for canceled orders.

### FREIGHT:

All orders will be shipped FOB Fort Morgan, Colorado.

### RETURNS:

No goods will be accepted for return unless authorized by Barry E. Walter Sr. Co. in advance of return. Return goods are subject to a minimum 20% handling charge plus freight. All material returned without prior written permission will be assessed a minimum of 50% plus freight.

### CLAIMS:

Claims for shortage must be made within five days after receipt of shipment. Items defective in material or workmanship will be replaced without charge. It is expressly understood that Barry E. Walter Sr. Co., liability is limited to furnishing of such replacement parts and that Barry E. Walter Sr. Co. will not be liable for any damages, losses, or expenses arising in connection with the use of or inability to use our products for any purpose.

### SPECIAL MATERIAL:

Materials made to the specifications of the customers by Barry E. Walter Sr. Co. are not returnable. Once an order has been placed it cannot be canceled. Barry E. Walter Sr. Co. reserves the right to charge a \$50.00 research fee to identify and quote on customer special requests.

### GENERAL:

Barry E. Walter Sr. Co. represents that it has complied with the Fair Labor Standards Act of 1938, as amended, and the Fair Employment Practice Act. All Catalogs, Price List, and Production Information Publications remain the property of Barry E. Walter Sr. Co. We also stock many items which are not currently included in our catalog and are constantly adding replacement parts. If you don't find the item you need, just ask!

### PRICING:

All Abrass items are net pricing.

Any usage of original manufactures' names or numbers, product names, and model names or numbers on invoices, quotes, or packing slips are strictly for descriptive and identification purposes. All drawing representations or depictions of original manufactures' products in Barry E. Walter Sr. Co. catalogs or faxes are strictly for identification purposes, and are used to determine the proper Barry Walter Co. replacement part. They are not meant to imply that the parts are manufactured by the original equipment manufacturer.

# Index by Category

## A

**Acrylic Handles**...5, 8, 11, 12, 18, 19, 20, 23, 28, 32

**ADA Handles**.....2, 6, 8, 9, 10, 11, 15, 30

**Aerators**.....37

### American Brass\*

Brass Stems .....1

Chrome Plated Handles.....1

Diverter Handles .....1

Diverter Stems .....1

Faucet Handles.....1

Faucet Stems.....1

Index Buttons.....24

### American Standard\*

ADA Handles .....2

Brass Stems .....1

Chrome Plated Escutcheons .....3, 4

Chrome Plated Handles.....1, 2, 3

Chrome Plated Stems.....1

Diverter Handles .....2, 3

Diverter Stems .....1

Escutcheon Sleeves .....4

Faucet Handles.....1, 2, 3

Faucet Seat Washers .....4

Faucet Stems.....1

Index Buttons.....4, 13

Lock Nuts.....1

Screw On Disks .....42

Single Lever Handles.....3

Snap On Disks.....42

Sponge Gaskets .....42

Tub & Shower Handles .....1, 2, 3

Valve Seals.....42

**Angle Stop Supply Stop**.....37, 38

## B

**Backflow Replacement Kits**.....10

### Ball Assemblies

Brass Ball Assemblies .....8, 9

Stainless Steel Ball Assemblies.....8, 9

**Barrels** .....16, 29

**Basin Cock Faucets** .....44

**Bevel Washers**.....42

### Binford

Basin Cock Faucets .....44

Brass Grid Drains .....44

Chrome Plated Handles.....36

Deck Mount Faucets .....43, 44

Deck Mount Pantry Faucets.....44

Deck Mount Pre-Rinse Units .....44

Diverter Stems.....37

Drain Pop-Up Assemblies .....44

Faucet Handles .....36

Grid Drains .....44

Kitchen Faucets.....43, 44

Lavatory Faucets .....43, 44

Loop Handles .....36

Pop-Up Plugs .....44

Pop-Up Stoppers .....44

Service Sink Faucets.....43

Tub & Shower Faucets.....43, 44

Tub & Shower Handle Kits ....36, 45-70

Wall Mount Faucets.....43, 44

Wall Mount Pre-Rinse Units .....44

Washerless Cartridges .....37

### Bolts

Toilet Seat Bolts .....41

### Boot

Diverter Stem Boot .....37

### Boxes

Flapper Boxes .....41

**Brass Ball Assembly**.....8, 9

**Brass Barrels**.....16, 29

**Brass Cartridges** .....19

**Brass Grid Drains**.....44

**Brass Nipples** .....14, 31

**Brass Stem Assemblies** .....29

**Brass Stems** .. 1, 4, 5, 6, 7, 9, 14, 15, 16,

17, 19, 20, 21, 22, 24, 25, 26, 27, 28,

29, 30, 31

### Briggs\*

Acrylic Handles.....5

Brass Stems .....4

Chrome Plated Handles .....4

Chrome Plated Stems .....4

Faucet Handles .....4, 5

Faucet Stems .....4

Index Buttons .....4

Plastic Cartridges .....4

Rubber Gaskets.....4

Single Lever Cartridges .....4

Single Lever Handles .....4

### Bubbler Heads

Drinking Fountain Bubbler Heads.....37

### Buttons

Index Buttons...4, 7, 8, 13, 14, 15, 16,

18, 24, 26, 28, 29, 30, 32

## C

**Cartridge Drains**.....40

### Cartridges

Brass Cartridges .....19

Ceramic Cartridges .....33, 34, 35, 36

Plastic Cartridges.. 4, 7, 14, 17, 18, 19, 20, 21, 31, 32, 33, 34, 35, 36, 37

Plastic Ceramic Cartridges.. 33, 34, 35, 36

Single Lever Cartridges... 4, 18, 19, 20, 21, 31, 32, 33, 34, 35, 36

Tub & Shower Cartridges...4, 18, 19, 20, 21, 22, 31, 32, 33, 34, 35, 36

Washerless Cartridges...7, 14, 17, 18, 19, 20, 31, 32, 33, 37

### Central Brass\*

Brass Stems.....5

Chrome Plated Escutcheons.....6

Chrome Plated Handles .....5, 6

Chrome Plated Stems .....5

Diverter Handles .....5, 6

Diverter Stems .....5

Faucet Handles .....5, 6

Faucet Stems.....5

Tub & Shower Handles .....5, 6

**Ceramic Cartridges**... 16, 21, 22, 26, 30,

33, 34, 35, 36

**Ceramic Disc Stems** . 16, 21, 22, 26, 30,

33, 34, 35, 36

### CFG\*

Ceramic Cartridges .....35

Single Lever Cartridges.....35

### CHG\*

Chrome Plated Handles .....6

Faucet Stems.....6

Hot & Cold Stems.....6

### Chicago\*

ADA Handles.....6

Chrome Plated Handles .....6

Chrome Plated Stems .....6

Faucet Handles .....6

Faucet Stems.....6

Index Rings .....6

**Chrome Plated Escutcheons** . 3, 4, 6, 8,

12, 13, 15, 16, 18, 19, 20, 21, 23, 24,

25, 26, 27, 31

**Chrome Plated Handles**...1, 2, 3, 4, 5, 6,

7, 8, 9, 10, 11, 14, 15, 16, 17, 18, 19,

22, 23, 25, 26, 27, 29, 30, 31, 32, 36

To Order Call: 1.800.767.5552 . Fax: 1.800.886.9831

# Index by Category

<b>Chrome Plated Stems</b> ...1, 4, 5, 6, 9, 16, 17, 21, 24, 26, 29	
<b>Chrome Shower heads</b> .....40	
<b>Closet Spuds</b> .....41	
<b>Coast*</b>	
Vinyl Flappers .....41	
<b>Concinnity*</b>	
Ceramic Cartridges.....34	
Single Lever Cartridges .....34	
<b>Connectors</b>	
Shower Arm Connectors.....40	
<b>Crane*</b>	
Brass Stems .....6, 7	
Chrome Plated Handles.....7	
Diverter Handles .....7	
Diverter Stems.....7	
Faucet Handles.....7	
Faucet Stems.....6, 7	
Index Buttons.....7	
Tub & Shower Handles .....7	
<b>Cushions</b>	
Rubber Cushions .....42	

## D

<b>Deck Mount Faucets</b> .....43, 44	
<b>Deck Mount Pantry Faucets</b> .....44	
<b>Deck Mount Pre-Rinse Units</b> .....44	
<b>Delta*</b>	
Acrylic Handles .....8	
ADA Handles .....8	
Brass Ball Assemblies .....8, 9	
Chrome Plated Escutcheons .....8	
Chrome Plated Handles.....8	
Extensions Stems .....7, 8	
Faucet Ball Assemblies.....8, 9	
Faucet Handles.....8	
Faucet Stems.....7	
Handle Repair Kits.....8	
Index Buttons.....8	
Plastic Cartridges.....7	
Push/Pull Diverter Cartridges.....7	
Seat/Spring Repair Kits.....9	
Single Lever Ball Assemblies.....8, 9	
Single Lever Handles.....8	
Stainless Steel Ball Assemblies.....8, 9	
Stem Extensions .....7, 8	
Tub & Shower Handles .....8	
Washerless Cartridges.....7	

## Disks

Screw On Disks .....42	
Snap On Disks.....42	
<b>Disposal Stoppers</b> .....42	
<b>Diverter Cartridges</b>	
Ceramic Diverter Cartridges .....33	
Push/Pull Diverter Cartridges .....7	
<b>Diverter Gates</b>	
Tub Spout Diverter Gates.....38	
<b>Diverter Handles</b> ...1, 2, 3, 5, 6, 7, 9, 10, 14, 15, 16, 17, 18, 22, 23, 25, 26, 27, 28, 30, 31	
<b>Diverter Stem Boots</b> .....37	
<b>Diverter Stems</b> ...1, 5, 7, 9, 14, 15, 17, 21, 22, 25, 26, 30, 31, 37	
<b>Diverter Tub Spouts</b> .....39	
<b>Diverter</b>	
Spray Diverter.....43	
<b>Drain Pop-Up Assemblies</b> .....44	
<b>Drains</b>	
Cartridge Drains .....44	
Grid Drains .....44	
Tub & Shower Drains .....39	
<b>Drinking Fountain Parts</b>	
Bubbler Head .....37	
Cartridge .....37	

## E

<b>Eljer*</b>	
ADA Handles .....9	
Brass Stems .....9	
Chrome Plated Handles .....9, 10	
Chrome Plated Stems .....9	
Diverter Handles.....9, 10	
Diverter Stems.....9	
Faucet Handles .....9, 10	
Faucet Stems .....9	
Flush Handles .....40	
Tub & Shower Handles.....9, 10	
<b>Elkay*</b>	
Cartridge Drinking Fountains.....37	
<b>Escutcheon Sleeves</b> ...4, 13, 15, 16, 24, 25, 26, 28, 31	
<b>Escutcheons</b>	
Chrome Plated Escutcheons...3, 4, 6, 8, 12, 13, 15, 16, 18, 19, 20, 21, 23, 24, 25, 26, 27, 31	
Spray Escutcheons.....37	

## Extensions

Stem Extensions .....7, 8, 20	
-------------------------------	--

## EZ-Flo\*

Ceramic Cartridges .....33, 34, 35	
Single Lever Cartridges.....33, 34, 35	

## F

### Face Plates

Overflow Face Plates .....39	
Trip Lever Face Plates .....23, 39	

<b>Faucet ADA Handles</b> ..2, 6, 8, 9, 10, 11, 15, 30	
---	--

<b>Faucet Ball Assemblies</b> .....8, 9	
---	--

<b>Faucet Handles</b> ...1, 2, 3, 4, 5, 6, 7, 8, 9, 10, 11, 12, 14, 15, 16, 17, 18, 19, 20, 22, 23, 25, 26, 27, 28, 29, 30, 31, 32, 36	
---	--

<b>Faucet Seat Washers</b> .....4, 24	
---------------------------------------	--

<b>Faucet Spray Nozzles</b> .....37	
-------------------------------------	--

<b>Faucet Stems</b> ...1, 2, 3, 4, 6, 7, 9, 14, 15, 16, 17, 18, 19, 20, 21, 22, 24, 25, 26, 27, 28, 29, 30, 31, 32, 33, 37	
--	--

<b>Faucet Supply Stops</b> .....37, 38	
--	--

### Faucets

Basin Cock Faucets .....44	
Deck Mount Faucets .....43, 44	
Deck Mount Pantry Faucets .....44	
Kitchen Faucets .....43, 44	
Lavatory Faucets.....43, 44	
Pre-Rinse Faucets .....44	
Service Sink Faucets .....43	
Tub & Shower Faucets.....43, 44	
Wall Mount Faucets .....43, 44	

### Febco\*

Backflow Replacement Kits.....10	
Gasket Repair Kits .....10	

### Fisher\*

Faucet Handles .....14	
------------------------	--

### Fit-All

Acrylic Handles .....11, 12	
ADA Handles.....10, 11	
Brass Nipples .....14	
Chrome Plated Escutcheons.....12, 13	
Chrome Plated Handles .....10, 11	
Escutcheon Sleeves.....13	
Faucet Handles .....10, 11, 12	
Fit-All Nipples .....13	
Index Buttons .....13, 14, 26	
Plastic Tapered Nipples .....13	

To Order Call: 1.800.767.5552 . Fax: 1.800.886.9831

\*Original Mfg's names are used for identification only and are not a representation that the items offered are genuine items of the original Mfg.

# Index by Category

Threaded Nipples .....	13, 14
Tub & Shower Handles .....	10, 11, 12
<b>Flapper Boxes</b> .....	41
<b>Flappers</b>	
Rubber Flappers .....	41
Toilet Flappers .....	41
Vinyl Flappers .....	41
<b>Flat Stoppers</b> .....	42
<b>Flat Washers</b> .....	42
<b>Flush Handles</b> .....	40

<b>G</b>	
<b>Gasket Repair Kits</b> .....	10
<b>Gaskets</b>	
Rubber Gaskets .....	4, 42
Sponge Gaskets .....	42
<b>Gerber*</b>	
ADA Handles .....	15
Balancing Spool .....	36
Brass Stems .....	14
Ceramic Cartridges .....	36
Chrome Plated Escutcheons .....	15
Chrome Plated Handles .....	14, 15
Diverter Handles .....	14, 15
Diverter Stems .....	14
Escutcheon Sleeves .....	15
Faucet Handles .....	14, 15
Faucet Stems .....	14
Index Buttons .....	13, 15
Plastic Cartridges .....	14
Single Lever Cartridges .....	36
Single Lever Mixing Spools .....	36
Tub & Shower Handles .....	14, 15
Washerless Cartridges .....	14
<b>Glacier Bay*</b>	
Ceramic Cartridges .....	33
Ceramic Disc Stems .....	33
Faucet Stems .....	33
Single Lever Cartridges .....	33
<b>Grid Drains</b>	
Brass Grid Drains .....	44

<b>H</b>	
<b>Handle &amp; Stem Assemblies</b> .....	29
<b>Handle Repair Kits</b>	
Acrylic Handles...5, 8, 11, 12, 18, 19, 20, 23, 28, 32	
ADA Handles...2, 6, 8, 9, 10, 11, 15, 30	

Chrome Plated Handles...1, 2, 3, 4, 5, 6, 7, 8, 9, 10, 11, 14, 15, 16, 17, 18, 19, 22, 23, 25, 26, 27, 29, 30, 31, 32, 36	
Diverter Handles...1, 2, 3, 5, 6, 7, 9, 10, 14, 15, 16, 17, 18, 22, 23, 25, 26, 27, 28, 30, 31	
Faucet Handles...1, 2, 3, 4, 5, 6, 7, 8, 9, 10, 11, 12, 14, 15, 16, 17, 18, 19, 20, 22, 23, 25, 26, 27, 28, 29, 30, 31, 32, 36	
Flush Handles .....	40
Lavatory Handles...1, 2, 3, 5, 6, 7, 8, 9, 10, 11, 12, 14, 15, 16, 17, 18, 19, 20, 22, 23, 25, 26, 27, 28, 29, 30, 31, 32, 36	
Lever Handles...2, 3, 6, 7, 8, 9, 10, 11, 14, 15, 16, 17, 19, 22, 23, 27, 29, 30, 31, 32, 36	
Loop Handles .....	36
Single Lever Handles...3, 4, 8, 19, 20, 23, 29, 32, 36	
Tub & Shower Handles...1, 2, 3, 5, 6, 7, 8, 9, 10, 11, 12, 14, 15, 16, 17, 18, 19, 20, 22, 23, 25, 26, 27, 28, 29, 30, 31, 32, 36	
Wall Hydrant Handles .....	32
<b>Harcraft*</b>	
Brass Stems .....	15
Chrome Plated Escutcheons .....	16
Chrome Plated Handles .....	15
Diverter Stems .....	15
Faucet Stems .....	15
Index Buttons .....	16
Tub & Shower Handles .....	15
<b>Harrington*</b>	
Ceramic Cartridges .....	34
Single Lever Cartridges .....	34
<b>Haws*</b>	
Drinking Fountain Bubbler Heads.....	37
<b>Heads</b>	
Tub & Shower Heads .....	40
<b>Hoses</b>	
Pre-Rinse Hoses .....	37
<b>Huntington*</b>	
Ceramic Cartridges .....	34
Single Lever Cartridges .....	34
<b>Hydroplast</b>	
Ceramic Cartridges .....	34, 35
Single Lever Cartridges .....	34, 35

<b>I</b>	
<b>Import Ceramic Cartridges</b> .....	33, 34, 35
<b>Index Buttons</b> ...4, 7, 8, 13, 14, 15, 16, 18, 24, 26, 28, 29, 30, 32	
<b>Index Rings</b> .....	6, 30
<b>Indiana Brass*</b>	
Brass Stems .....	16
Chrome Plated Handles .....	16
Diverter Handles .....	16
Escutcheon Sleeves .....	16
Faucet Handles .....	16
Faucet Stems .....	16
Tub & Shower Handles .....	16
<b>J</b>	
<b>Jaclo*</b>	
Ceramic Cartridges .....	34
Single Lever Cartridges .....	34
<b>Jado*</b>	
Ceramic Cartridges .....	33
Single Lever Cartridges .....	33
<b>K</b>	
<b>Kit Seats</b> .....	9, 32
<b>Kitchen Faucet Spray Diverter</b> .....	43
<b>Kitchen Faucets</b> .....	43, 44
<b>Kohler*</b>	
Acrylic Handles .....	18
Brass Barrels .....	16
Brass Stems .....	16, 17
Ceramic Disc Stems .....	16
Chrome Plated Escutcheons .....	18
Chrome Plated Handles .....	17, 18
Chrome Plated Stems .....	16, 17
Diverter Handles .....	17, 18
Diverter Stems .....	17
Faucet Handles .....	17, 18
Faucet Stems .....	16, 17
Flush Handles .....	40
Index Buttons .....	18
Plastic Cartridges .....	17
Plastic Nipples .....	18
Single Lever Cartridges .....	34
Threaded Nipples .....	18
Tub & Shower Handles .....	17, 18
Washerless Cartridges .....	17

## L

To Order Call: 1.800.767.5552 . Fax: 1.800.886.9831



# Index by Category

<b>Lavatory Faucets</b> .....	43, 44
<b>Lavatory Handles</b> ...1, 2, 3, 5, 6, 7, 8, 9,	
10, 11, 12, 14, 15, 16, 17, 18, 19, 20,	
22, 23, 25, 26, 27, 28, 29, 30, 31, 32,	
36	
<b>Lever Handles</b> ...2, 3, 6, 7, 8, 9, 10, 11,	
14, 15, 16, 17, 19, 22, 23, 27, 29, 30,	
31, 32, 36	
<b>Loop Handles</b> .....	36

## M

<b>Male Aerators</b> .....	37
<b>Milwaukee*</b>	
Brass Stems .....	19
Faucet Stems.....	18
Plastic Cartridges.....	18
Washerless Cartridges.....	18

### Mixet\*

Acrylic Handles .....	19
Chrome Plated Escutcheons .....	19
Chrome Plated Handles.....	19, 36
Faucet Handles.....	36
Faucet Stems.....	19
Loop Handles.....	19, 36
Single Lever Cartridges .....	19
Single Lever Handles.....	19, 36
Tub & Shower Handles .....	19, 36

### Mixing Spools

Single Lever Mixing Spools.....	36
---------------------------------	----

### Moen\*

Acrylic Handles .....	20
Chrome Plated Handles.....	19
Diverter Handles .....	19
Faucet Handles.....	20
Faucet Stems.....	19
Plastic Cartridges.....	19
Single Lever Cartridges .....	19
Single Lever Handles.....	20
Tub & Shower Handles .....	19, 20
Washerless Cartridges.....	19

## N

### Niagara\*

Tub & Shower Heads.....	40
-------------------------	----

### Nibco\*

Acrylic Handles .....	20
Cartridges .....	20
Chrome Plated Escutcheons .....	20
Escutcheon Extension .....	20

Faucet Handles .....	20
Faucet Stems .....	20
Plastic Cartridges .....	20
Single Lever Cartridges .....	20
Stem Extension .....	20
Washerless Cartridges .....	20

### Nipples

Brass Nipples .....	14, 31
Fit-All Nipples .....	13
Plastic Nipples.....	13, 18, 24, 28
Plastic Tapered Nipples.....	13
Threaded Nipples..	13, 14, 18, 24, 28, 31

### Nuts

Lock Nuts .....	1
Slip Joint Nuts .....	40

## P

### Paijo\*

Ceramic Cartridges.....	34
Single Lever Cartridges .....	34

### Pegasus\*

Ceramic Cartridges.....	34
Single Lever Cartridges .....	34

### Phoenix\*

Acrylic Handles.....	20
Brass Stems .....	20
Chrome Plated Escutcheons .....	21
Faucet Stems .....	20
Tub & Shower Handles.....	20

<b>Plastic Cartridges</b> ...4, 7, 14, 17, 18, 19,	
20, 21, 31, 32, 33, 34, 35, 36, 37	

<b>Plastic Ceramic Cartridges</b> ...33, 34, 35,	
36	

<b>Plastic Nipples</b> .....	13, 18, 24, 28
------------------------------	----------------

<b>Plastic Tapered Nipples</b> .....	13
--------------------------------------	----

### Plugs

Pop-Up Plugs .....	44
Test Plugs .....	40

### Pop-Up Assemblies

Drain Pop-Up Assemblies .....	44
-------------------------------	----

<b>Pop-Up Plugs</b> .....	44
---------------------------	----

<b>Pop-Up Stoppers</b> .....	44
------------------------------	----

### Premier\*

Diverter Stem Boots .....	37
---------------------------	----

### Pre-Rinse Faucets

Deck Mount Pre-Rinse Faucets.....	44
Wall Mount Pre-Rinse Faucets .....	44

<b>Pre-Rinse Hoses</b> .....	30
------------------------------	----

<b>Pre-Rinse Spray Heads</b> .....	30
------------------------------------	----

<b>Pre-Rinse Springs</b> .....	30
--------------------------------	----

### Price Pfister\*

Acrylic Handles .....	23
Brass Stems.....	21, 22
Ceramic Cartridges .....	33, 35
Ceramic Disc Stems.....	21, 22
Chrome Plated Escutcheons.....	23, 24
Chrome Plated Handles .....	22, 23
Chrome Plated Stems .....	21
Diverter Handles .....	22, 23
Diverter Stems .....	21, 22
Escutcheon Sleeves.....	24
Faucet Handles .....	22, 23
Faucet Seat Washers.....	24
Faucet Stems .....	21, 22
Index Buttons .....	7, 13, 24
Plastic Cartridges .....	21
Plastic Nipples.....	24
Single Lever Cartridges.....	21, 33, 35
Single Lever Handles .....	23
Threaded Nipples .....	24
Trip Lever Face Plates .....	23
Tub & Shower Handles .....	22, 23

### Pro Flo\*

Ceramic Cartridges .....	35
Single Lever Cartridges.....	35

<b>Push/Pull Diverter Cartridges</b> .....	7
--	---

## R

### Repair Kits

Seat/Spring Repair Kits.....	9, 32
Tub & Shower .....	45-70

### Replacement Kits

Backflow Replacement Kits.....	10
Gasket Repair Kits .....	10

### Rings

Index Rings .....	6, 30
Tub & Shower Rings .....	36

<b>Rubber Cushions</b> .....	42
------------------------------	----

<b>Rubber Flappers</b> .....	41
------------------------------	----

<b>Rubber Gaskets</b> .....	4, 42
-----------------------------	-------

To Order Call: 1.800.767.5552 . Fax: 1.800.886.9831

\*Original Mfg's names are used for identification only and are not a representation that the items offered are genuine items of the original Mfg.

# Index by Category

## S

### Savoy\*

Brass Stems .....	24, 25
Chrome Plated Escutcheons .....	25
Chrome Plated Handles .....	25
Chrome Plated Stems .....	24
Diverter Handles .....	25
Diverter Stems .....	25
Escutcheon Sleeves .....	25
Faucet Handles .....	25
Faucet Stems .....	24, 25

### Sayco\*

Balancing Spool .....	36
Brass Stems .....	25
Ceramic Cartridges .....	33, 35
Chrome Plated Escutcheons .....	26
Chrome Plated Handles .....	25, 26, 36
Diverter Handles .....	25
Diverter Stems .....	25
Escutcheon Sleeves .....	26
Faucet Handles .....	25, 26, 36
Faucet Stems .....	26
Index Buttons .....	26
Single Lever Cartridges .....	33, 35
Single Lever Handles .....	36
Single Lever Mixing Spools .....	36
Tub & Shower Handles .....	25, 26, 36

### Screw On Disks .....

### Seals

Valve Seals .....	42
-------------------	----

### Seasons\*

Ceramic Cartridges .....	34
Single Lever Cartridges .....	34

### Seat/Spring Repair Kits .....

### Service Sink Faucets .....

### Shower Arm Connectors .....

### Shower Arms .....

### Showers Heads .....

### Single Lever

Single Lever Ball Assemblies .....	8, 9
Single Lever Cartridges .....	4, 18, 19, 20, 21, 31, 32, 33, 34, 35, 36
Single Lever Handles .....	3, 4, 8, 19, 20, 23, 29, 32, 36
Single Lever Mixing Spools .....	36

### Sink & Tubs Stoppers .....

### Sink Spray Hoses .....

### Sleeves

Escutcheon Sleeves .....	4, 13, 15, 16, 24, 25, 26, 28, 31
--------------------------	-----------------------------------

### Slip Joint Nuts .....

### Slip Joints Washers .....

### Snap On Disks .....

### Speakman\*

Ceramic Disc Stems .....	26
Chrome Plated Handles .....	26
Chrome Plated Stems .....	26
Diverter Handles .....	26
Faucet Stems .....	26
Index Buttons .....	13

### Sponge Gaskets .....

### Spouts

Tub Spouts .....	38, 39
------------------	--------

### Spray Diverter

Kitchen Faucet Spray Diverter .....	43
-------------------------------------	----

### Spray Escutcheons .....

### Spray Hoses

Sink Spray Hoses .....	37
------------------------	----

### Spray Nozzles

Faucet Spray Nozzles .....	37
----------------------------	----

### Spuds

Closet Spuds .....	41
Urinal Spuds .....	41

### Stainless Steel Ball Assemblies .....

### Starlight\*

Ceramic Cartridges .....	35
Single Lever Cartridges .....	35

### Stem

Brass Stems .....	1
-------------------	---

### Stem Assemblies

Brass Stem Assemblies .....	29
-----------------------------	----

### Stem Extensions .....

### Stem Sleeves .....

### Stems

Brass Stems .....	1, 4, 5, 6, 7, 9, 14, 15, 16, 17, 19, 20, 21, 22, 24, 25, 26, 27, 28, 29, 30, 31
Ceramic Disc Stems .....	16, 21, 22, 26, 30, 33, 34, 35, 36
Chrome Plated Stems .....	1, 4, 5, 9, 16, 17, 19, 21, 24, 26, 29
Diverter Stems .....	1, 5, 7, 9, 14, 15, 17, 21, 22, 25, 26, 30, 31, 37
Faucet Stems .....	1, 2, 3, 4, 6, 14, 15, 16, 17, 18, 19, 20, 21, 22, 24, 25, 26, 27, 28, 29, 30, 31, 32, 33, 37

### Sterling\*

Acrylic Handles .....	28
Brass Stems .....	26, 27
Chrome Plated Escutcheons .....	28
Chrome Plated Handles .....	27
Chrome Plated Stems .....	26
Diverter Handles .....	27, 28
Diverter Stems .....	26
Escutcheon Sleeves .....	27
Faucet Handles .....	27, 28
Faucet Stems .....	26, 27
Index Buttons .....	13, 28
Plastic Nipples .....	28
Threaded Nipples .....	28
Tub & Shower Handles .....	27, 28

### Stoppers

Disposal Stoppers .....	42
Flat Stoppers .....	42
Pop-Up Stoppers .....	44
Sink & Tubs Stoppers .....	42

### Streamway\*

Brass Stems .....	28
Chrome Plated Handles .....	29
Faucet Handles .....	29
Faucet Stems .....	28

### Supply Stops .....

### Symmons\*

Ceramic Cartridges .....	33
Chrome Plated Handles .....	29
Faucet Handles .....	29
Index Buttons .....	29
Single Lever Cartridges .....	33
Single Lever Handles .....	29
Tub & Shower Handles .....	29

## T

### Tank to Bowl Gaskets .....

### T & S\*

ADA Handles .....	30
Brass Barrels .....	29
Brass Stem Assemblies .....	29
Brass Stems .....	29
Chrome Plated Handles .....	29, 30
Chrome Plated Stems .....	29
Diverter Handles .....	30
Faucet Handles .....	29, 30
Faucet Stems .....	29
Index Buttons .....	30
Index Rings .....	30
Pre-Rinse Hoses .....	30

To Order Call: 1.800.767.5552 . Fax: 1.800.886.9831



# Index by Category

Pre-Rinse Spray Heads .....	30
Pre-Rinse Springs.....	30
Tub & Shower Handles .....	29, 30
Tub & Shower Handles ADA.....	30
Vacuum Breaker Kit .....	30
<b>Tapered Plastic Nipples</b> .....	13
<b>Test Plugs</b> .....	40
<b>Threaded Nipples</b> ...13, 14, 18, 24, 28, 31	
<b>Toilet Flappers</b> .....	41
<b>Toilet Seat Bolts</b> .....	41
<b>Trip Lever Face Plates</b> .....	23, 39
<b>Tub &amp; Shower Cartridges</b> ...4, 18, 19, 20, 21, 22, 31, 32, 33, 34, 35, 36	
<b>Tub &amp; Shower Drains</b> .....	39
<b>Tub &amp; Shower Faucets</b> .....	43, 44
<b>Tub &amp; Shower Handle &amp; Stem Assemblies</b> 45-70	
<b>Tub &amp; Shower Handles</b> ...1, 2, 3, 5, 6, 7, 8, 9, 10, 11, 12, 14, 15, 16, 17, 18, 19, 20, 22, 23, 25, 26, 27, 28, 29, 30, 31, 32, 36	
<b>Tub &amp; Shower Heads</b> .....	40
<b>Tub &amp; Shower Repair Kits</b> .....	45-70
<b>Tub &amp; Shower Rings</b> .....	36
<b>Tub Spout Diverter Gates</b> .....	38
<b>Tub Spouts</b>	
Diverter Tub Spouts.....	39

## U

<b>Union Brass*</b>	
Brass Nipples.....	31
Brass Stems .....	30, 31
Ceramic Disc Stems .....	30
Chrome Plated Escutcheons .....	31
Chrome Plated Handles.....	31
Diverter Handles .....	31
Diverter Stems .....	30, 31
Escutcheon Sleeves .....	31
Faucet Handles.....	31
Faucet Stems.....	30, 31
Handle Diverter .....	31
Threaded Nipples .....	31
Tub & Shower Handles .....	31
<b>Urinal Spuds</b> .....	41

## V

<b>Valley*</b>	
Acrylic Handles .....	32
Chrome Plated Handles.....	32

Faucet Handles .....	32
Faucet Stems .....	31, 32
Index Buttons .....	32
Plastic Cartridges .....	31, 32
Seat/Spring Repair Kits .....	32
Single Lever Cartridges .....	31, 32
Single Lever Handles .....	32
Tub & Shower Handles.....	32
Washerless Cartridges .....	31, 32
<b>Valve Seals</b> .....	42
<b>Vinyl Flappers</b> .....	41

## W

<b>Wall Hydrant Handles</b> .....	32
<b>Wall Mount Faucets</b> .....	43, 44
<b>Wall Mount Pre-Rinse Units</b> .....	44
<b>Washerless Cartridges</b> ...7, 14, 17, 18, 19, 31, 32, 37	
<b>Washers</b>	
Bevel Washers .....	42
Flat Washers .....	42
Slip Joints Washers .....	42
<b>Wolverine</b>	
Ceramic Cartridges.....	35, 36
Single Lever Cartridges .....	35, 36
<b>Woodford*</b>	
Wall Hydrant Handles .....	32

## Z

<b>Zurn*</b>	
Ceramic Cartridges.....	34
Single Lever Cartridges .....	34

*To Order Call: 1.800.767.5552 . Fax: 1.800.886.9831*

*\*Original Mfg's names are used for identification only and are not a representation that the items offered are genuine items of the original Mfg.*



# Quality Replacement Parts



## AMERICAN BRASS\*

**Stem  
Brass**



- 20 TPI
- Includes gasket

Item #	Length (in)	Broach	H/C
ABRAM20176-LF	2 <sup>15</sup> / <sub>16</sub>	3-7 (17pt)	H or C

## AMERICAN BRASS\* Diverter Stem Brass



Item #	Length (in)	TPI	Broach
ABRAM20177	3 <sup>15</sup> / <sub>16</sub>	20	3-7 (17pt)

## AMERICAN BRASS\* Handle Pair Chrome

- Also fits Nibco, Phoenix & Streamway



Item #	Height (in)	Broach
ABRAM33051	1 <sup>5</sup> / <sub>8</sub>	3-7 (17pt)

## AMERICAN BRASS\* Diverter Handle Chrome

- Also fits Nibco, Phoenix & Streamway



Item #	Height (in)	Broach
ABRAM33051D	1 <sup>5</sup> / <sub>8</sub>	3-7 (17pt)

## AMERICAN STANDARD\* Stem Brass Aquaseal



Item #	Length (in)	Broach	H/C
ABRAS10101-LF	1 <sup>15</sup> / <sub>16</sub>	1-4 (22pt)	Hot
ABRAS10102-LF	1 <sup>15</sup> / <sub>16</sub>	1-4 (22pt)	Cold

## AMERICAN STANDARD\*

**Stem  
Brass  
"R" Series**

- Includes o-ring



Item #	Length (in)	Broach	H/C
ABRAS10103-LF	1 <sup>23</sup> / <sub>32</sub>	1-4 (22pt)	Hot
ABRAS10104-LF	1 <sup>23</sup> / <sub>32</sub>	1-4 (22pt)	Cold

## AMERICAN STANDARD\* Lock Nut Brass Aquaseal



Item #	Height (in)
ABRAS10105	<sup>7</sup> / <sub>16</sub>

## AMERICAN STANDARD\* Stem Brass Cadet



Item #	Length (in)	Broach	H/C
ABRAS10108-LF	1 <sup>9</sup> / <sub>32</sub>	1-6 (16pt)	Hot
ABRAS10109-LF	1 <sup>9</sup> / <sub>32</sub>	1-6 (16pt)	Cold

## AMERICAN STANDARD\* Diverter Stem Brass Heritage



Item #	Length (in)	Broach
ABRAS20101	5 <sup>1</sup> / <sub>4</sub>	1-4 (22pt)

## AMERICAN STANDARD\* Stem Brass Tract-Line



- Includes gasket

Item #	Length (in)	TPI	Broach
ABRAS20170-18T	5 <sup>1</sup> / <sub>4</sub>	18	1-4 (22pt)

## AMERICAN STANDARD\*

**Stem  
Brass  
Colony**



Item #	Length (in)	Broach	H/C
ABRAS20172	4 <sup>1</sup> / <sub>2</sub>	1-6 (16pt)	H or C

## AMERICAN STANDARD\* Diverter Stem Brass Colony



Item #	Length (in)	Broach
ABRAS20173	5	1-6 (16pt)

## AMERICAN STANDARD\* Stem Brass Colony



Item #	Length (in)	Broach	H/C
ABRAS20174	5	1-6 (16pt)	H or C

## AMERICAN STANDARD\* Stem Brass Re-Nu



- Chrome plated stem, includes gasket

Item #	Length (in)	Broach	H/C
ABRAS20186-15	5 <sup>15</sup> / <sub>32</sub>	1-4 (22pt)	H or C

## AMERICAN STANDARD\* Lav / Kit Handle pair Chrome Cadet



Item #	Height (in)	Broach
ABRAS32100	2 <sup>1</sup> / <sub>4</sub>	1-6 (16pt)

To Order Call: 1.800.767.5552 . Fax: 1.800.886.9831

\*Original Mfg's names are used for identification only and are not a representation that the items offered are genuine items of the original Mfg.

## Quality Replacement Parts

### AMERICAN STANDARD\*

**Tub & Shower  
Handle Pair**  
Chrome  
Cadet



Item #	Height (in)	Broach
ABRAS32101	2 3/4	1-6 (16pt)

### AMERICAN STANDARD\*

**Diverter  
Handle**  
Chrome  
Cadet



Item #	Height (in)	Broach
ABRAS32101D	2 3/4	1-6 (16pt)

### AMERICAN STANDARD\*

**ADA Lav/Kit  
Handle Pair**  
Chrome



• Includes chrome buttons

Item #	Length (in)	Broach
ABRAS32110	4 1/4	1-4 (22pt)

### AMERICAN STANDARD\*

**Lav/Kit  
Handle Pair**  
Chrome  
Colony



Item #	Height (in)	Broach
ABRAS32120	1 3/16	1-6 (16pt)

### AMERICAN STANDARD\*

**Tub & Shower  
Handle Pair**  
Chrome  
Colony



Item #	Height (in)	Broach
ABRAS32121	1 1/4	1-6 (16pt)

### AMERICAN STANDARD\*

**Tub & Shower  
Handle Pair**  
Chrome  
Colony



Item #	Height (in)	Broach
ABRAS32130	1 1/8	1-6 (16pt)

### AMERICAN STANDARD\*

**Diverter  
Handle**  
Chrome  
Colony



Item #	Height (in)	Broach
ABRAS32130D	1 1/8	1-6 (16pt)

### AMERICAN STANDARD\*

**Lav/Kit  
Handle Pair**  
Chrome  
Colony



Item #	Height (in)	Broach
ABRAS32131	1 1/8	1-6 (16pt)

### AMERICAN STANDARD\*

**Tub & Shower  
Handle Pair**  
Chrome  
Colony



Item #	Height (in)	Broach
ABRAS32140	1 1/8	1-6 (16pt)

### AMERICAN STANDARD\*

**Diverter  
Handle**  
Chrome  
Colony



Item #	Height (in)	Broach
ABRAS32140D	1 1/8	1-6 (16pt)

### AMERICAN STANDARD\*

**Handle Pair**  
Chrome  
Colony Shelf



Item #	Height (in)	Broach
ABRAS32141	1 1/4	1-6 (16pt)

### AMERICAN STANDARD\*

**Tub & Shower  
Handle Pair**  
Chrome  
Heritage



Item #	Height (in)	Broach
ABRAS32170	1 5/8	1-4 (22pt)

### AMERICAN STANDARD\*

**Diverter  
Handle**  
Chrome  
Heritage



Item #	Height (in)	Broach
ABRAS32170D	1 5/8	1-4 (22pt)

### AMERICAN STANDARD\*

**Lavatory  
Handle Pair**  
Chrome  
Heritage



Item #	Height (in)	Broach
ABRAS32171	1 5/8	1-4 (22pt)

### AMERICAN STANDARD\*

**Tub & Shower  
Handle Pair**  
Chrome  
Heritage,  
AquaSeal



Item #	Height (in)	Broach
ABRAS32172	1 11/16	1-4 (22pt)

To Order Call: 1.800.767.5552 . Fax: 1.800.886.9831



# Quality Replacement Parts



## AMERICAN STANDARD\*

**Diverter  
Handle**  
Chrome  
Heritage,  
AquaSeal



Item #	Height (in)	Broach
ABRAS32172D	1 1/16	1-4 (22pt)

## AMERICAN STANDARD\*

**Lavatory  
Handle**  
Chrome  
Aquarian



Item #	Height (in)	Arm Length (in)	Broach
ABRAS32173	1 1/16	2 3/8	

## AMERICAN STANDARD\*

**Lavatory  
Handle Pair**  
Chrome  
Heritage,  
AquaSeal



Item #	Height (in)	Broach
ABRAS32175	1 1/4	1-4 (22pt)

## AMERICAN STANDARD\*

**Kitchen  
Handle**  
Chrome  
Aquarian



Item #	Height (in)	Arm Length (in)	Broach
ABRAS32176	1 1/16	4 1/4	

## AMERICAN STANDARD\*

**Tub & Shower  
Handle Pair**  
Chrome  
Tackline



Item #	Height (in)	Broach
ABRAS32178	1/16	1-4 (22pt)

## AMERICAN STANDARD\*

**Diverter  
Handle**  
Chrome  
Tackline



Item #	Height (in)	Broach
ABRAS32178D	1/16	1-4 (22pt)

## AMERICAN STANDARD\*

**Lav/Kit  
Handle**  
Chrome  
Aquarian II



Item #	Height (in)	Length (in)	Broach
ABRAS32181	7/8	3	

## AMERICAN STANDARD\*

**Lav/Kit  
Handle**  
Chrome  
Ultramax



Item #	Height (in)	Length (in)	Broach
ABRAS32182	7/8	2 7/8	

## AMERICAN STANDARD\*

**Tub & Shower  
Handle Pair**  
Chrome  
Crown



Item #	Height (in)	Width (in)	Broach
ABRAS32183	1 7/8	2 3/8	1-4 (22pt)

## AMERICAN STANDARD\*

**Diverter  
Handle**  
Chrome  
Crown



Item #	Height (in)	Width (in)	Broach
ABRAS32183D	1 7/8	2 3/8	1-4 (22pt)

## AMERICAN STANDARD\*

**Lav/Kit  
Handle Pair**  
Chrome  
Heritage



Item #	Height (in)	Broach
ABRAS32186	1 3/4	1-4 (22pt)

## AMERICAN STANDARD\*

**Lav/Kit/T&S  
Handle Pair**  
Chrome



Item #	Height (in)	Broach
ABRAS32188	29/32	1-4 (22pt)

## AMERICAN STANDARD\*

**Diverter  
Handle**  
Chrome



Item #	Height (in)	Broach
ABRAS32188D	29/32	1-4 (22pt)

## AMERICAN STANDARD\*

**Escutcheon**  
Chrome



Item #	O.D. (in)	I.D. (in)
ABRAS50329	3	1 3/8

## AMERICAN STANDARD\*

**Escutcheon**  
Chrome



Item #	O.D. (in)	Height (in)	Thread
ABRAS50344	3	2	1 1/16-24

To Order Call: 1.800.767.5552 . Fax: 1.800.886.9831

\*Original Mfg's names are used for identification only and are not a representation that the items offered are genuine items of the original Mfg.



# Quality Replacement Parts

## AMERICAN STANDARD\* Escutcheon Chrome



Item #	O.D. (in)	Height (in)	Thread
ABRAS50346	2 1/2	1 1/16	3/16-20

## AMERICAN STANDARD\* Escutcheon Chrome



Item #	O.D. (in)	Height (in)	Thread
ABRAS50347	3	1 1/2	3/16-20

## AMERICAN STANDARD\* Tapped Escutcheon Chrome



• For mating part see  
Fit-All ABRFA91620-S

Item #	O.D. (in)	Height (in)	Thread
ABRAS50348	3	1 1/2	3/16-20

## AMERICAN STANDARD\* Sleeve Chrome Colony



• For mating part see  
Fit-All ABRFA50320

Item #	O.D. (in)	Length (in)	Thread
ABRAS50353-S	1 1/16	1 15/16	2 1/2-32
ABRAS50353-L	1 1/16	2 15/16	2 1/2-32

## AMERICAN STANDARD\* Sleeve Chrome



Item #	O.D. (in)	Length (in)	Thread
ABRAS50354	1 3/8	1 1/8	1.175 - 24

## AMERICAN STANDARD\* Index Button 13/16" O.D.



Item #	H/C/D
ABRAS77103H	Hot
ABRAS77103C	Cold
ABRAS77103D	Diverter

## AMERICAN STANDARD\* Index Button 5/8" O.D.



Item #	H/C	Color
ABRAS77104H	Hot	Red
ABRAS77104C	Cold	Blue

## AMERICAN STANDARD\* Handle Nut Chrome



Item #	H/C/D
ABRAS77179H	Hot
ABRAS77179C	Cold
ABRAS77179D	Diverter

## AMERICAN STANDARD\* Seat Rubber Cadet



Item #
ABRAS9001

## AMERICAN STANDARD\* Seat Rubber Aquaseal



Item #
ABRAS9001

## BRIGGS\* Cartridge Plastic



• Also for Bradley,  
Kohler & Sayco

Item #	Length
ABRBR10213	3 11/32

## BRIGGS\* Gasket Rubber



• Fits ABRBR10213

Item #
ABRBR10213-GASKET

## BRIGGS\* Stem Brass



• Includes gasket

Item #	Length (in)	Broach	H/C
ABRBR20251	4 1/2	3-3 (18pt)	H or C

## BRIGGS\* Stem Brass



• Chrome Plated, includes gasket

Item #	Length (in)	Broach	H/C
ABRBR20252	5 1/2	3-3 (18pt)	H or C

## BRIGGS\* Cross Handle Pair Chrome



• Also fits Indiana & Union Brass

Item #	Height (in)	Broach
ABRBR33246	1/16	3-3 (18pt)

To Order Call: 1.800.767.5552 . Fax: 1.800.886.9831

# Quality Replacement Parts



## BRIGGS\* Lav/Kit Handle Pair Chrome



- Also fits Indiana & Union Brass

Item #	Height (in)	Broach
ABRBR33651	2 <sup>9</sup> / <sub>32</sub>	3-3 (18pt)

## BRIGGS\* Diverter Handle Chrome



- Also fits Indiana & Union Brass

Item #	Height (in)	Broach
ABRBR33651D	2 <sup>9</sup> / <sub>32</sub>	3-3 (18pt)

## BRIGGS\* Lav/Kit Handle Acrylic



Item #	Height (in)	Broach
ABRBR404-07	2	3-3 (18pt)

## CENTRAL BRASS\* Stem Brass



- Old Style
- Includes gasket

Item #	Length (in)	Broach	H/C
ABRCB10368-LF	1 1 <sup>7</sup> / <sub>32</sub>	1-6 (16pt)	Hot
ABRCB10369-LF	1 1 <sup>7</sup> / <sub>32</sub>	1-6 (16pt)	Cold

## CENTRAL BRASS\* Stem Brass



- New Style
- Includes gasket

Item #	Length (in)	Broach	H/C
ABRCB10370-LF	1 1 <sup>7</sup> / <sub>32</sub>	1-6 (16pt)	Hot
ABRCB10371-LF	1 1 <sup>7</sup> / <sub>32</sub>	1-6 (16pt)	Cold

## CENTRAL BRASS\* Diverter Stem Brass



- New Style, includes gasket

Item #	Length (in)	Broach
ABRCB20329	5 3 <sup>4</sup> / <sub>4</sub>	1-6 (16pt)

## CENTRAL BRASS\* Stem Brass



- Includes gasket

Item #	Length (in)	Broach	H/C
ABRCB20331	5 7 <sup>3</sup> / <sub>32</sub>	1-6 (16pt)	H or C

## CENTRAL BRASS\* Stem Brass



- Includes gasket

Item #	Length (in)	Broach	H/C
ABRCB20332	5 1 <sup>4</sup> / <sub>4</sub>	1-6 (16pt)	H or C

## CENTRAL BRASS\* Stem Brass



- Includes gasket

Item #	Length (in)	Broach	H/C
ABRCB20333	5	1-6 (16pt)	H or C

## CENTRAL BRASS\* Stem Brass



- Includes gasket

Item #	Size (in)	Broach	H/C
ABRCB20336	5.25	1-6 (16pt)	H or C

## CENTRAL BRASS\* Stem Brass



- Chrome plated stem and sleeve
- Includes gasket

Item #	Length (in)	Broach	H/C
ABRCB20337	5 1 <sup>4</sup> / <sub>4</sub>	1-6 (16pt)	H or C

## CENTRAL BRASS\* Tub & Shower Handle Pair Chrome



Item #	Height (in)	Broach
ABRCB32231	1 1 <sup>4</sup> / <sub>4</sub>	1-6 (16pt)

## CENTRAL BRASS\* Diverter Handle Chrome



Item #	Height (in)	Broach
ABRCB32231D	1 1 <sup>4</sup> / <sub>4</sub>	1-6 (16pt)

## CENTRAL BRASS\* Lavatory Handle Pair Chrome



Item #	Height (in)	Broach
ABRCB32232	1 1 <sup>4</sup> / <sub>16</sub>	1-6 (16pt)

Send Your ABRASS Orders To:

BARRY E.  SR. CO.

Fax or E-mail:  
orderdesk@barrywalter.com

To Order Call: 1.800.767.5552 . Fax: 1.800.886.9831

\*Original Mfg's names are used for identification only and are not a representation that the items offered are genuine items of the original Mfg.

# Quality Replacement Parts

## CENTRAL BRASS\* Tub & Shower Handle Pair Chrome



Item #	Height (in)	Broach
ABRCB32233	1 1/8	1-6 (16pt)

## CENTRAL BRASS\* Tub & Shower Handle Pair Chrome



Item #	Height (in)	Broach
ABRCB32240	2 3/8	1-6 (16pt)

## CENTRAL BRASS\* Diverter Handle Chrome



Item #	Height (in)	Broach
ABRCB32240D	2 3/8	1-6 (16pt)

## CENTRAL BRASS\* Lav/Kit Handle Chrome



Item #	Height (in)	Broach	H/C
ABRCB32241H	1 1/8	1-6 (16pt)	Hot
ABRCB32241C	1 1/8	1-6 (16pt)	Cold
ABRCB32241	1 1/8	1-6 (16pt)	Pair

## CENTRAL BRASS\* Handle Pair Chrome



Item #	Height (in)	Broach
ABRCB33247	1/16	1-6 (16pt)

## CENTRAL BRASS\* Escutcheon Chrome



- For mating part see Fit-All ABRFA91620-S

Item #	O.D. (in)	Height (in)	Thread
ABRCB50421	2 3/4	2 1/4	1/4-20

✓ NSF / ANSI 372 Compliant

## CHG\* Stem Pair Brass



- Includes chrome plated brass lock-nuts & gaskets
- Sold in pairs, fits Binford ABF3057 faucet

Item #
ABR3057-STEM-PR-LF

## CHG\* Handle Pair Chrome



- Fits Binford ABF3057 faucet

Item #
ABR3057-HDL-PR

## CHICAGO\* Stem Brass



- Chrome plated stem

Item #	Length (in)	Broach	H/C
ABRCH10320	2 1/16	3-12 (Sqr)	H
ABRCH10321	2 1/16	3-12 (Sqr)	C

✓ NSF / ANSI 372 Compliant

## CHICAGO\* Stem Brass



- Chrome plated stem

Item #	Length (in)	Broach	H/C
ABRCH10320-LF	2 1/16	3-12 (Sqr)	H
ABRCH10321-LF	2 1/16	3-12 (Sqr)	C

## CHICAGO\* Lav/Kit Handle Pair Chrome Quatern



Item #	Height (in)	Broach
ABRCH32001	1 1/16	3-12 (Sqr)

## CHICAGO\* ADA Lav/Kit Handle Pair Chrome



Item #	Length (in)	Broach
ABRCH32002	4	3-12 (Sqr)

## CHICAGO\* Index Ring Plastic



Item #	Color	H/C
ABRCH77180H	Red	Hot
ABRCH77180C	Blue	Cold

✓ NSF / ANSI 372 Compliant

## CRANE\* Stem Brass Dial-EZE



- Includes gasket

Item #	Length (in)	Broach	H/C
ABRCR10312-LF	2 3/8	1-1 (12pt)	H
ABRCR10313-LF	2 3/8	1-1 (12pt)	C

## CRANE\* Stem Brass



Item #	Length (in)	Broach	H/C
ABRCR20334	4 2/32	2-5 (12pt)	H or C

To Order Call: 1.800.767.5552 . Fax: 1.800.886.9831



# Quality Replacement Parts



## CRANE\* Diverter Stem Brass



- Includes gasket

Item #	Length (in)	Broach
ABRCR20341	4 $\frac{19}{32}$	2-5 (12pt)

## CRANE\* Tub & Shower Handle Pair Chrome



Item #	Height (in)	Broach
ABRCR32330	1 $\frac{13}{16}$	1-2 (12pt)

## CRANE\* Diverter Handle Chrome



Item #	Height (in)	Broach
ABRCR32330D	1 $\frac{13}{16}$	1-2 (12pt)

## CRANE\* Tub & Shower Handle Pair Chrome



Item #	Height (in)	Broach
ABRCR32335	1 $\frac{3}{4}$	1-1 (12pt)

## CRANE\* Tub & Shower Handle Pair Chrome



- Old Style

Item #	Height (in)	Broach
ABRCR32337	1 $\frac{5}{16}$	1-1 (12pt)

## CRANE\* Tub & Shower Handle Pair Chrome



- New Style

Item #	Height (in)	Broach
ABRCR32338	1 $\frac{5}{8}$	1-1 (12pt)

## CRANE\* Lavatory Handle Pair Chrome



- New Style

Item #	Height (in)	Broach
ABRCR32339	1 $\frac{13}{32}$	1-1 (12pt)

## CRANE\* Tub & Shower Handle Pair Chrome



- New Style

Item #	Height (in)	Broach
ABRCR32340	1 $\frac{5}{16}$	1-1 (12pt)

## CRANE\* Index Button 1 3/32" O.D. 32335



Item #	H/C/D
ABRCR77121H	Hot
ABRCR77121C	Cold
ABRCR77121D	Diverter

## DELTA\* Push/Pull Diverter Cartridge Brass



- Chrome plated stem

Item #	Length (in)
ABRDE10420	3 $\frac{25}{32}$



## DELTA\* Cartridge Plastic



- Brass Post & S.S. Base
- Also Fits: Jameco, Price Pfister & Glacier Bay

Item #	Broach	H/C
ABRDE10421	D	H or C



## DELTA\* Cartridge Plastic



Item #	Length (in)	Broach	H/C
ABRDE10422	1 $\frac{15}{16}$	D	H or C



## DELTA\* Cartridge Plastic



- Brass Post & S.S. Base

Item #	Length (in)	Broach	H/C
ABRDE10423	1 $\frac{7}{8}$	D	H or C



## DELTA\* Cartridge Plastic



- Plastic Post & S.S. Base

Item #	Length (in)	Broach	H/C
ABRDE10424	1 $\frac{7}{8}$	D	H or C

## DELTA\* Stem Extender Plastic



- Brass post

Item #	Length (in)	Broach
ABRDE10426	3	D

To Order Call: 1.800.767.5552 . Fax: 1.800.886.9831

\*Original Mfg's names are used for identification only and are not a representation that the items offered are genuine items of the original Mfg.

**DELTA\***  
*Scald  
Guard  
Escutcheon  
Chrome*



Item #
ABRDE50317

**DELTA\***  
*Stem Extender  
Plastic*



Item #	Length (in)	Broach
ABRDE5200EX	3	D

**DELTA\***  
*ADA  
Handle  
Pair  
Chrome*



- 4" Blades
- For Hospital Use

Item #	Length (in)	Broach
ABRDE33961	4	D

**DELTA\***  
*Lav/Kit  
Handle  
Acrylic*



- Includes Hex adapter & uses #70 ball

Item #	Height (in)
ABRDE404-01WA	2 1/4

**DELTA\***  
*Lav/Kit  
Handle  
Acrylic*



- Uses #212 ball

Item #	Height (in)
ABRDE404-02	2 1/4

**DELTA\***  
*Tub & Shower  
Handle  
Acrylic*



- #212 Offset
- Single Lever

Item #	Height (in)
ABRDE404-03	2 1/4

**DELTA\***  
*Lav/Kit  
Handle Pair  
Acrylic  
Old Style*



Item #	Height (in)	Broach
ABRDE408-04	1 7/8	D

**DELTA\***  
*Lav/Kit  
Handle Pair  
Acrylic*



- For widespread lavatory

Item #	Height (in)	Broach
ABRDE408-16	2 1/8	D

**DELTA\***  
*Index Button  
1 1/4" O.D.*



- Fits Binford faucet ABF5510
- For use in handle model ABRDE404-01WA

Item #
ABRDE7404-01

**DELTA\***  
*Index Button  
23/32" O.D.*



Item #	H/C
ABRDLX-INDEX-H	Hot
ABRDLX-INDEX-C	Cold



**DELTA\***  
*#70 Ball  
Stainless Steel*



- Single Lever
- Lavatory only

Item #	Broach
ABRDE1-70SS	Round



**DELTA\***  
*#70 Ball  
Stainless Steel*



- Single Lever
- For Lav/T&S
- OEM style with fourth hole

Item #	Broach
ABRDE1-70SS-OEM	Round

**DELTA\***  
*#70 Ball  
Brass*



- Single Lever

Item #	Broach
ABRDE1-70B	Round



**DELTA\***  
*#70 Ball  
Brass*



- Single Lever

Item #	Broach
ABRDE1-70B-LF	Round

**DELTA\***  
*#70 Ball  
Brass*



- Single Lever
- High Volume

Item #	Broach
ABRDE1-70B-SP	Round

To Order Call: 1.800.767.5552 . Fax: 1.800.886.9831



# Quality Replacement Parts



## DELTA\* #212 Ball Brass

- Single Lever



Item #	Broach
ABRDE1-212B	Diamond



## DELTA\* #212 Ball Brass

- Single Lever



Item #	Broach
ABRDE1-212B-LF	Diamond



## DELTA\* #212 Ball Stainless Steel

- Single Lever



Item #	Broach
ABRDE1-212SS	Diamond

## DELTA\* Repair Kit Single Lever

- Includes: Cam assembly, seats, springs and S.S. Ball (#70)



Item #
ABRDE-KIT-1

## DELTA\* Repair Kit Seats/Springs

- Includes: two each, new style seats and springs



Item #
ABRDE-KIT-2

## ELJER\* Stem Brass



- For mating part see Fit-All ABRFA50322
- Includes gasket

Item #	Length (in)	Broach	H/C
ABREL20524	4 1 <sup>1</sup> / <sub>32</sub>	1-6 (16pt)	H or C

## ELJER\* Diverter Stem Brass



- For mating part see Fit-All ABRFA50322
- Includes gasket

Item #	Length (in)	Broach
ABREL20525	4 2 <sup>3</sup> / <sub>32</sub>	1-6 (16pt)

## ELJER\* Stem Brass



- For mating part see Fit-All ABRFA50322
- Includes sleeve & gasket

Item #	Length (in)	Broach	H/C
ABREL20526	4 1 <sup>1</sup> / <sub>32</sub>	1-6 (16pt)	H
ABREL20533	4 1 <sup>1</sup> / <sub>32</sub>	1-6 (16pt)	C

## ELJER\* Diverter Stem Brass



- For mating part see Fit-All ABRFA50322
- Includes sleeve & gasket

Item #	Length (in)	Broach
ABREL20527	4 2 <sup>3</sup> / <sub>32</sub>	1-6 (16pt)

## ELJER\* Stem Brass



- For mating part see Fit-All ABRFA50322
- Includes sleeve & gasket

Item #	Length (in)	Broach	H/C
ABREL20528	4 7 <sup>1</sup> / <sub>32</sub>	1-6 (16pt)	H or C

## ELJER\* Diverter Stem Brass



- For mating part see Fit-All ABRFA50322
- Includes sleeve & gasket

Item #	Length (in)	Broach
ABREL20529	4 1 <sup>1</sup> / <sub>64</sub>	1-6 (16pt)

## ELJER\* ADA Handle Pair Chrome



Item #	Length (in)	Broach
ABREL33151	4	1-6 (16pt)

## ELJER\* Tub & Shower Handle Pair Chrome



Item #	Height (in)	Broach
ABREL33152	1 1 <sup>1</sup> / <sub>8</sub>	1-6 (16pt)

## ELJER\* Diverter Handle Chrome



Item #	Height (in)	Broach
ABREL33152D	1 1 <sup>1</sup> / <sub>8</sub>	1-6 (16pt)

## ELJER\* Lavatory Handle Pair Chrome



Item #	Height (in)	Broach
ABREL33613	1 3 <sup>1</sup> / <sub>16</sub>	1-6 (16pt)

To Order Call: 1.800.767.5552 . Fax: 1.800.886.9831

\*Original Mfg's names are used for identification only and are not a representation that the items offered are genuine items of the original Mfg.

# Quality Replacement Parts

**ELJER\***  
**Lavatory**  
**Handle Pair**  
**Chrome**



Item #	Height (in)	Broach
ABREL33614	1 1/16	1-6 (16pt)

**ELJER\***  
**Lavatory**  
**Handle Pair**  
**Chrome**  
**Lustra**



Item #	Height (in)	Broach
ABREL33815	1 1/16	1-6 (16pt)

**ELJER\***  
**Tub & Shower**  
**Handle Pair**  
**Chrome**  
**Lustra**



Item #	Height (in)	Broach
ABREL33820	1 1/8	1-6 (16pt)

**ELJER\***  
**Diverter**  
**Handle**  
**Chrome**  
**Lustra**



Item #	Height (in)	Broach
ABREL33820D	1 1/8	1-6 (16pt)

**FEBCO\***  
**Bonnet &**  
**Poppet**  
**Assembly**  
**Plastic**



- Fits Febco #765 vacuum breaker
- Febco is a registered trade name and is not affiliated or associated with Abrass America or the Barry E. Walter Sr. Company

Item #	Size (in)	Febco Cross Ref.
ABRFEB182512	3/4	905-211

**FEBCO\***  
**Bonnet &**  
**Poppet**  
**Assembly**  
**Plastic**



- Fits Febco #765 vacuum breaker
- Febco is a registered trade name and is not affiliated or associated with Abrass America or the Barry E. Walter Sr. Company

Item #	Size (in)	Febco Cross Ref.
ABRFEB091011	1	905-212

**FEBCO\***  
**Gasket**  
**Repair**  
**Kit**  
**Plastic**



- Fits 1" bonnet & poppet assembly

Item #	Size (in)
ABRFEB19A	1

**FEBCO\***  
**Gasket**  
**Repair**  
**Kit**  
**Plastic**



- Fits 3/4" bonnet & poppet assembly

Item #	Size (in)
ABRFEB19B	2 3/8

**FIT-ALL**  
**Tub & Shower**  
**Handle Pair**  
**Chrome**



- Pair is packaged with two universal adapters
- Will accept brass handle spud

Item #	Height (in)
ABRFA32235	1 1/8

**FIT-ALL**  
**Tub & Shower**  
**Handle Pair**  
**Chrome**



- Pair is packaged with two universal adapters
- Will accept brass handle spud

Item #	Height (in)
ABRFA32245	1

**FIT-ALL**  
**ADA**  
**Handle Pair**  
**Chrome**



- Pair is packaged with two universal adapters
- Will accept brass handle spud

Item #	Length (in)
ABRFA32255	2 1/4

**FIT-ALL**  
**Handle Pair**  
**Porcelain**



- Pair is packaged with a variety of adaptors, screws and spacers
- Will accept brass handle spud

Item #	Height (in)
ABRFA32266	2 3/8

**FIT-ALL**  
**Handle Pair**  
**Chrome**



- Pair is packaged with a variety of adaptors, screws and spacers
- Will accept brass handle spud

Item #	Height (in)
ABRFA32267CP	2 3/8

**FIT-ALL**  
**Handle Pair**  
**Polished**  
**Brass**



- Pair is packaged with a variety of adaptors, screws and spacers
- Will accept brass handle spud

Item #	Height (in)
ABRFA32267PB	2 3/8

Send Your ABRASS Orders To:

BARRY E.  WALTER SR. CO.

Fax or E-mail:  
orderdesk@barrywalter.com

To Order Call: 1.800.767.5552 . Fax: 1.800.886.9831

# Quality Replacement Parts



## FIT-ALL Handle Pair Chrome

- Pair is packaged with a variety of adaptors, screws and spacers
- Will accept brass handle spud



Item #	Height (in)
ABRFA32270	2 $\frac{3}{8}$

## FIT-ALL Handle Pair Porcelain

- Pair is packaged with a variety of adaptors, screws and spacers
- Will accept brass handle spud



Item #	Height (in)
ABRFA32271	2 $\frac{3}{8}$

## FIT-ALL Tub & Shower Handle Pair Chrome

- Pair is packaged with two universal adaptors
- Will accept brass handle spud



Item #	Length (in)
ABRFA32410	5

## FIT-ALL Lav/Kit Handle Pair Chrome

- Pair is packaged with two universal adaptors
- Will accept brass handle spud



Item #	Height (in)
ABRFA32411	1 $\frac{3}{8}$

## FIT-ALL Tub & Shower Handle Pair Chrome

- Pair is packaged with two universal adaptors
- Will accept brass handle spud



Item #	Height (in)
ABRFA32412	1 $\frac{1}{2}$

## FIT-ALL Tub & Shower Handle Pair Chrome

- Pair is packaged with two universal adaptors
- Will accept brass handle spud



Item #	Height (in)
ABRFA32451	1 $\frac{1}{4}$

## FIT-ALL Tub & Shower Handle Pair Chrome

- Pair is packaged with two universal adaptors
- Will accept brass handle spud



Item #	Height (in)
ABRFA32452	1 $\frac{1}{2}$

## FIT-ALL Tub & Shower Handle Pair Chrome

- Pair is packaged with two universal adaptors
- Will accept brass handle spud



Item #	Height (in)
ABRFA32453	1 $\frac{3}{4}$

## FIT-ALL Tub & Shower Handle Pair Acrylic

- Pair is packaged with two universal adaptors
- Will accept brass handle spud



Item #	Height (in)
ABRFA32480	1 $\frac{3}{4}$

## FIT-ALL Tub & Shower Handle Pair Chrome

- Pair is packaged with two universal adaptors
- Will accept brass handle spud



Item #	Height (in)
ABRFA32801	2 $\frac{1}{2}$

## FIT-ALL Lav/Kit Handle Pair Chrome

- Pair is packaged with two universal adaptors
- Will accept brass handle spud



Item #	Height (in)
ABRFA32802	1 $\frac{3}{8}$

## FIT-ALL Tub & Shower Handle Pair Chrome Vise-Grip



Item #	Height (in)
ABRFA33720	1 $\frac{1}{8}$

## FIT-ALL Tub & Shower Handle Pair Chrome Vise-Grip



Item #	Height (in)
ABRFA33740	1 $\frac{1}{8}$

## FIT-ALL Tub & Shower Handle Pair Acrylic Vise-Grip



Item #	Height (in)
ABRFA33780	2

Send Your ABRASS Orders To:

BARRY E.  SR. CO.

Fax or E-mail:  
[orderdesk@barrywalter.com](mailto:orderdesk@barrywalter.com)

To Order Call: 1.800.767.5552 . Fax: 1.800.886.9831

\*Original Mfg's names are used for identification only and are not a representation that the items offered are genuine items of the original Mfg.



# Quality Replacement Parts

## FIT-ALL Tub & Shower Handle Pair Acrylic

- Pair is packaged with two universal adapters
- Will accept brass handle spud



Item #	Height (in)
ABRFA408-10	2

## FIT-ALL Tub & Shower Handle Pair Acrylic

- Pair is packaged with two universal adapters
- Will accept brass handle spud



Item #	Height (in)	Broach
ABRFA408-10L	2 $\frac{3}{8}$	Long

## FIT-ALL Tub & Shower Handle Pair Acrylic

- Pair is packaged with two universal adapters
- Will accept brass handle spud



Item #	Height (in)	Broach
ABRFA408-10S	2 $\frac{3}{8}$	Short

## FIT-ALL Escutcheon Chrome

- Set screw included



Item #	O.D. (in)	I.D. (in)
ABRFA50318	2 $\frac{1}{16}$	1 $\frac{5}{16}$

## FIT-ALL Escutcheon Chrome Fits American Standard

- Set screw included



Item #	O.D. (in)	I.D. (in)
ABRFA50320	2 $\frac{1}{16}$	1 $\frac{1}{16}$

## FIT-ALL Escutcheon Chrome Fits American Standard, Nibco

- Set screw included



Item #	O.D. (in)	I.D. (in)
ABRFA50321	2 $\frac{1}{16}$	1 $\frac{13}{16}$

## FIT-ALL Escutcheon Chrome Fits Eljer, Sterling, Indiana & Milwaukee

- Set screw included



Item #	O.D. (in)	I.D. (in)
ABRFA50322	2 $\frac{1}{16}$	1

## FIT-ALL Escutcheon Chrome

- Set screw included



Item #	O.D. (in)	I.D. (in)
ABRFA50323	2 $\frac{1}{16}$	1 $\frac{7}{8}$

## FIT-ALL Escutcheon Chrome

- Set screw included



Item #	O.D. (in)	I.D. (in)
ABRFA50324	2 $\frac{1}{16}$	1 $\frac{1}{4}$

## FIT-ALL Escutcheon Chrome Fits Gerber, Briggs & Kohler

- Set screw included

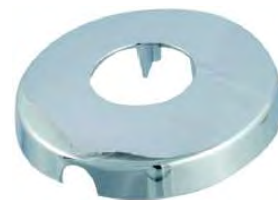


Item #	O.D. (in)	I.D. (in)
ABRFA50325	2 $\frac{3}{4}$	1 $\frac{7}{8}$

## FIT-ALL Escutcheon Chrome

*Fits Price Pfister, Central, Sayco, Sterling & Streamway*

- Set screw included



Item #	O.D. (in)	I.D. (in)
ABRFA50326	2 $\frac{3}{4}$	1 $\frac{1}{4}$

## FIT-ALL Escutcheon Chrome Fits Crane

- Set screw included



Item #	O.D. (in)	I.D. (in)
ABRFA50327	2 $\frac{3}{4}$	1 $\frac{3}{8}$

## FIT-ALL Escutcheon Chrome Fits Savoy

- Set screw included



Item #	O.D. (in)	I.D. (in)
ABRFA50330	2 $\frac{1}{16}$	1 $\frac{1}{16}$

## FIT-ALL Escutcheon Chrome

- Reversible
- See ABRFA50332 & ABRFA50353 for mating part



Item #	Length (in)	Width (in)	Height (in)
ABRFA50331	4 $\frac{1}{16}$	2 $\frac{3}{4}$	1 $\frac{1}{16}$

Send Your ABRASS Orders To:

BARRY E.  SR. CO.

Fax or E-mail:  
orderdesk@barrywalter.com

To Order Call: 1.800.767.5552 . Fax: 1.800.886.9831

# Quality Replacement Parts



**FIT-ALL  
Escutcheon  
Chrome**



Item #	O.D. (in)	Height (in)	Thread
ABRFA50341-24T	2 $\frac{7}{8}$	1 $\frac{3}{4}$	$\frac{5}{8}$ -24

**FIT-ALL  
Escutcheon  
Chrome**



Item #	O.D. (in)	Height (in)	I.D. (in)
ABRFA50350	2 $\frac{13}{16}$	1 $\frac{3}{4}$	$\frac{5}{8}$

**FIT-ALL  
Escutcheon  
Chrome**

- Reversible
- See ABRFA50332 & ABRFA50353 for mating part



Item #	O.D. (in)	Height (in)
ABRFA50351	2 $\frac{3}{4}$	1 $\frac{1}{16}$

**FIT-ALL  
Escutcheon  
Chrome**



Item #	O.D. (in)	Height (in)	Thread
ABRFA50361	2 $\frac{3}{4}$	1 $\frac{1}{16}$	$\frac{5}{8}$ -24
ABRFA50361-18T	2 $\frac{3}{4}$	1 $\frac{1}{16}$	$\frac{5}{8}$ -18

**FIT-ALL  
Escutcheon  
Chrome**



Item #	O.D. (in)	Height (in)	I.D. (in)
ABRFA50372	2 $\frac{13}{16}$	1 $\frac{3}{4}$	$\frac{5}{16}$

**FIT-ALL  
Escutcheon  
Chrome**



Item #	O.D. (in)	Height (in)	I.D. (in)
ABRFA50380	2 $\frac{13}{16}$	1 $\frac{3}{4}$	$\frac{3}{4}$

**FIT-ALL  
Sleeve  
Chrome**

- Reversible



Item #	O.D. (in)	Height (in)	Thread
ABRFA50332	1 $\frac{1}{4}$	1 $\frac{1}{16}$	$\frac{5}{8}$ -18

**FIT-ALL  
Sleeve  
Chrome**

- Reversible



Item #	O.D. (in)	Height (in)	Thread
ABRFA50352	1 $\frac{1}{4}$	1 $\frac{1}{16}$	$\frac{5}{8}$ -24

**FIT-ALL  
Tapered  
Nipple  
Plastic**



Item #	Length (in)	TPI
ABRFA50362	3 $\frac{1}{4}$	Various

**FIT-ALL  
Tapered  
Nipple  
Plastic**



Item #	Length (in)	TPI
ABRFA50363	2	$2\frac{1}{2}$ -18

**FIT-ALL  
Index Button  
5/8" O.D.  
Fits American  
Standard**



Item #	H/C/D
ABRFA77101H	Hot
ABRFA77101C	Cold
ABRFA77101D	Diverter

**FIT-ALL  
Index Button  
3/4" O.D.  
Fits American  
Standard**



Item #	H/C/D
ABRFA77102H	Hot
ABRFA77102C	Cold
ABRFA77102D	Diverter

**FIT-ALL  
Index Button  
1 1/4" O.D.**



Item #	H/C/D
ABRFA77112H	Hot
ABRFA77112C	Cold
ABRFA77112D	Diverter

**FIT-ALL  
Index Button  
3/4" O.D.**



Item #	H/C/D
ABRFA77116H	Hot
ABRFA77116C	Cold
ABRFA77116D	Diverter

**TAKE NOTE**

**You can order  
stems and other parts that  
you don't see from  
Barry E. Walter Sr. Co.**

To Order Call: 1.800.767.5552 . Fax: 1.800.886.9831

\*Original Mfg's names are used for identification only and are not a representation that the items offered are genuine items of the original Mfg.



# Quality Replacement Parts

**FIT-ALL**  
**Index Button**  
1/2" O.D.  
Chrome



Item #	H/C/D
ABRFA77161H	Hot
ABRFA77161C	Cold
ABRFA77161D	Diverter

**FIT-ALL**  
**Index Button**  
1/2" O.D.  
Polished Brass



Item #	H/C/D
ABRFA77161H-PB	Hot
ABRFA77161C-PB	Cold
ABRFA77161D-PB	Diverter

**FIT-ALL**  
**Escutcheon Nipple**  
Brass



- Fits American Standard & Central

Item #	Length (in)	TPI
ABRFA91620-L	5	1/16-20

**FIT-ALL**  
**Escutcheon Nipple**  
Brass



- Fits American Standard & Central

Item #	Length (in)	TPI
ABRFA91620-S	2 1/2	1/16-20

**FIT-ALL**  
**Escutcheon Nipple**  
Brass



- Fits Briggs, Gerber, Indiana Brass & Union Brass

Item #	Length (in)	TPI
ABRFA5824S	2 1/2	3/8-24

**FISHER\***  
**Lav/Kit Handle**  
Chrome



Item #	Length (in)	Broach	H/C
ABRF132601H	2	3-31 (12pt)	Hot
ABRF132601C	2	3-31 (12pt)	Cold
ABRF132601	2	3-31 (12pt)	Pair



**GERBER\***  
**Stem**  
Brass  
New Style



- Includes gasket

Item #	Length (in)	Broach	H/C
ABRGE10724-LF	1 3/8	2-3 (16pt)	H
ABRGE10725-LF	1 3/8	2-3 (16pt)	C



**GERBER\***  
**Cartridge**  
Plastic



- Includes gasket

Item #	Length (in)	Broach	H/C
ABRGE10726-LF	1 23/32	2-3 (16pt)	H
ABRGE10727-LF	1 23/32	2-3 (16pt)	C

**GERBER\***  
**Stem**  
Brass



- Includes gasket

Item #	Length (in)	Broach	H/C
ABRGE20778B	5 1/4	2-3 (16pt)	H or C

**GERBER\***  
**Diverter Stem**  
Brass



- Includes gasket

Item #	Length (in)	Broach
ABRGE20779	5 3/4	2-3 (16pt)

**GERBER\***  
**Tub & Shower Handle Pair**  
Chrome



Item #	Height (in)	Broach
ABRGE32500	2 1/2	2-3 (16pt) Long

**GERBER\***  
**Diverter Handle**  
Chrome



Item #	Height (in)	Broach
ABRGE32500D	2 1/2	2-3 (16pt) Long

**GERBER\***  
**Tub & Shower Handle Pair**  
Chrome



Item #	Height (in)	Broach
ABRGE32501	2 1/2	2-3 (16pt) Short

**GERBER\***  
**Diverter Handle**  
Chrome



Item #	Height (in)	Broach
ABRGE32501D	2 1/2	2-3 (16pt) Short

**GERBER\***  
**Lav/Kit Handle Pair**  
Chrome



Item #	Height (in)	Broach
ABRGE32510	1 1/2	2-3 (16pt)

To Order Call: 1.800.767.5552 . Fax: 1.800.886.9831

# Quality Replacement Parts



**GERBER\***  
**ADA Lav/Kit**  
**Handle Pair**  
*Chrome*



Item #	Length (in)	Broach
ABRGE32511	4	2-3 (16pt)

**GERBER\***  
**Lav/Kit**  
**Handle Pair**  
*Chrome*



Item #	Height (in)	Broach
ABRGE32520	1 1/16	2-3 (16pt)

**GERBER\***  
**Diverter**  
**Handle**  
*Chrome*



Item #	Height (in)	Broach
ABRGE32521D	1 1/16	2-3 (16pt)

**GERBER\***  
**Tub & Shower**  
**Handle Pair**  
*Chrome*



Item #	Height (in)	Broach
ABRGE32540	1	2-3 (16pt)

**GERBER\***  
**Handle**  
**Pair**  
*Chrome*



• Also fits Sayco

Item #	Height (in)	Broach
ABRGE32541	3/4	2-3 (16pt)

**GERBER\***  
**Diverter**  
**Handle**  
*Chrome*



• Also fits Sayco

Item #	Height (in)	Broach
ABRGE32541D	3/4	2-3 (16pt)

**GERBER\***  
**Escutcheon**  
*Chrome*



Item #	Length (in)	Width (in)	I.D. (in)
ABRGE50377	4 1/4	2 3/4	1 1/8

**GERBER\***  
**Escutcheon**  
*Chrome*

• See ABRFA5824S for mating part



Item #	O.D. (in)	Height (in)	Thread
ABRGE50403	2 3/4	2 1/2	1/2-24

**GERBER\***  
**Sleeve**  
*Chrome*

• See ABRFA50325 for mating part



Item #	O.D. (in)	Length (in)	Thread
ABRGE50437	1 1/8	3 3/4	1 1/2-32

**GERBER\***  
**Index Button**  
*1 1/16" O.D.*



Item #	H/C/D
ABRGE77122H	Hot
ABRGE77122C	Cold
ABRGE77122D	Diverter

**HARCRAFT\***  
**Stem**  
*Brass*



• Includes gasket

Item #	Size (in)	Broach	H/C
ABRHA20831	4 1/2	1-2 (12pt)	H or C

**HARCRAFT\***  
**Diverter Stem**  
*Brass*



Item #	Size (in)	Broach
ABRHA20834	4 1/4	1-2 (12pt)

**HARCRAFT\***  
**Tub & Shower**  
**Handle Pair**  
*Chrome*



Item #	Height (in)	Broach
ABRHA32646	2 3/8	1-2 (12pt)

**HARCRAFT\***  
**Diverter**  
**Handle**  
*Chrome*



Item #	Height (in)	Broach
ABRHA32646D	2 5/8	1-2 (12pt)

**HARCRAFT\***  
**Lavatory**  
**Handle Pair**  
*Chrome*



Item #	Height (in)	Broach
ABRHA32647	1 3/4	1-2 (12pt)

To Order Call: 1.800.767.5552 . Fax: 1.800.886.9831

\*Original Mfg's names are used for identification only and are not a representation that the items offered are genuine items of the original Mfg.

# Quality Replacement Parts

## HARCRAFT\* Escutcheon Chrome



Item #	O.D. (in)	Height (in)	Thread
ABRHA50340	2 7/8	2 3/8	7/8-20

## HARCRAFT\* Index Button 1 11/16" O.D.



Item #	H/C
ABRHA77176H	Hot
ABRHA77176C	Cold

## HARCRAFT\* Index Button 2" O.D.



Item #	H/C/D
ABRHA77177H	Hot
ABRHA77177C	Cold
ABRHA77177D	Diverter

## INDIANA BRASS\* Stem Brass



Item #	Length (in)	Broach	H/C
ABRIN20911	3 5/16	3-3 (18pt)	H
ABRIN20912	3 5/16	3-3 (18pt)	C

## INDIANA BRASS\* Lav/Kit Handle Pair Chrome

- Also fits Briggs & Union Brass



Item #	Height (in)	Broach
ABRIN33610	7/8	3-3 (18pt)

## INDIANA BRASS\* Tub & Shower Handle Pair Chrome

- Also fits Briggs & Union Brass



Item #	Height (in)	Broach
ABRIN33611	1 3/16	3-3 (18pt)

## INDIANA BRASS\* Tub & Shower Handle Pair Chrome

- Also fits Briggs & Union Brass



Item #	Height (in)	Broach
ABRIN33615	1 1/8	3-3 (18pt)

## INDIANA BRASS\* Diverter Handle Chrome

- Also fits Briggs & Union Brass



Item #	Height (in)	Broach
ABRIN33615D	1 1/8	3-3 (18pt)

## INDIANA BRASS\* Sleeve Chrome

- See ABRFA50322 for mating part



Item #	O.D. (in)	Length (in)	Thread
ABRIN50384	1	2 5/16	3 1/2-32



## KOHLER\* Stem Ceramic

- Nickel Plated Brass



Item #	Size (in)	Broach	H/C
ABRKO11101-LF	2 7/32	1-7 (19pt)	H
ABRKO11102-LF	2 7/32	1-7 (19pt)	C

## KOHLER\* Stem Brass

- Chrome Plated Stem
- Brass Plunger



Item #	Size (in)	Broach	H/C
ABRKO11124-LF	2 1/2	1-7 (19pt)	H
ABRKO11125-LF	2 1/2	1-7 (19pt)	C

## KOHLER\* Barrel Brass



Item #	Length (in)	H/C
ABRKO11126-LF	1 3/8	Hot or Cold

## KOHLER\* Stem Brass Trend

- Nickel Plated Gland
- Includes gasket



Item #	Size (in)	Broach	H/C
ABRKO11127-LF	1 15/32	1-6 (16pt)	H
ABRKO11128-LF	1 15/32	1-6 (16pt)	C

## KOHLER\* Stem Brass Valvet

- Chrome Plated Stem
- Plastic Plunger



Item #	Size (in)	Broach	H/C
ABRKO11134	2 1/2	1-7 (19pt)	H
ABRKO11135	2 1/2	1-7 (19pt)	C

## KOHLER\* Stem Brass Valvet

- Chrome Plated Stem
- Plastic Plunger



Item #	Size (in)	Broach	H/C
ABRKO11134-LF	2 1/2	1-7 (19pt)	H
ABRKO11135-LF	2 1/2	1-7 (19pt)	C

To Order Call: 1.800.767.5552 . Fax: 1.800.886.9831



# Quality Replacement Parts



✓ NSF / ANSI 372  
Compliant

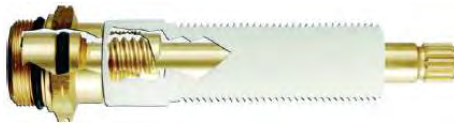
**KOHLER\***  
*Cartridge*  
Plastic  
Coralais



Item #	Length (in)	Broach	H/C
ABRKO11158	1 15/32	D	H
ABRKO11159	1 15/32	D	C

**KOHLER\***  
*Stem*  
Brass  
Trend

• Includes  
nipple



Item #	Length (in)	Broach	H/C
ABRKO21101	4 1/4	1-6 (16pt)	H or C

**KOHLER\***  
*Stem*  
Brass  
Shoreham Trend

• Includes  
sleeve



Item #	Length (in)	Broach	H/C
ABRKO21102	4 1/4	1-6 (16pt)	H
ABRKO21103	4 1/4	1-6 (16pt)	C

**KOHLER\***  
*Stem*  
Brass  
O.S. Dalney



• Chrome Plated Stem, includes gasket

Item #	Length (in)	Broach	H/C
ABRKO21104	5 13/32	1-7 (19pt)	H or C

**KOHLER\***  
*Diverter Stem*  
Brass  
Trend

• Includes  
nipple



Item #	Length (in)	Broach
ABRKO21111	5	1-6 (16pt)

**KOHLER\***  
*Diverter Stem*  
Brass  
Trend

• Includes  
nipple



Item #	Length (in)	Broach
ABRKO21112	5 1/4	1-6 (16pt)

**KOHLER\***  
*Diverter Stem*  
Brass  
Valvet

• Chrome  
Plated Stem



Item #	Length (in)	Broach
ABRKO21113	5 1/8	1-7 (19pt)

**KOHLER\***  
*Diverter Stem*  
Brass  
Shoreham Trend



Item #	Length (in)
ABRKO21114	5 1/4

**KOHLER\***  
*Diverter Stem*  
Brass  
Shoreham Trend

• Includes  
sleeve



Item #	Length (in)
ABRKO21115	5 13/32

**KOHLER\***  
*Lav/Kit*  
Handle Pair  
Chrome  
Triton



Item #	Height (in)	Broach
ABRKO32630	1 1/2	1-7 (19pt)

**KOHLER\***  
*Lav/Kit*  
Handle Pair  
Chrome  
Constellation/  
Triton II



Item #	Height (in)	Broach
ABRKO32631	1 3/8	1-7 (19pt)

**KOHLER\***  
*Tub & Shower*  
Handle Pair  
Chrome  
Constellation/  
Triton II



Item #	Height (in)	Broach
ABRKO32632	1 3/4	1-7 (19pt)

**KOHLER\***  
*Diverter*  
Handle  
Chrome  
Constellation/  
Triton II



Item #	Height (in)	Broach
ABRKO32632D	1 3/4	1-7 (19pt)

**KOHLER\***  
*Tub & Shower*  
Handle Pair  
Chrome  
Triton



Item #	Height (in)	Broach
ABRKO32635	1 1/6	1-7 (19pt)

**KOHLER\***  
*Tub & Shower*  
Handle Pair  
Chrome  
Triton



Item #	Height (in)	Broach
ABRKO32636	2	1-7 (19pt)

To Order Call: 1.800.767.5552 . Fax: 1.800.886.9831

\*Original Mfg's names are used for identification only and are not a representation that the items offered are genuine items of the original Mfg.

# Quality Replacement Parts

**KOHLER\***  
*Lav/Kit*  
*Handle Pair*  
Chrome  
Trend



Item #	Height (in)	Broach
ABRKO32640	1 3/4	1-6 (16pt)

**KOHLER\***  
*Tub & Shower*  
*Handle Pair*  
Chrome  
Trend



Item #	Height (in)	Broach
ABRKO32641	2	1-6 (16pt)

**KOHLER\***  
*Diverter*  
*Handle*  
Chrome  
Trend



Item #	Height (in)	Broach
ABRKO32641D	2	1-6 (16pt)

**KOHLER\***  
*Lav/Kit*  
*Handle Pair*  
Acrylic  
Trend



• With ABS

Item #	Height (in)	Broach
ABRKO408-13	1 3/4	1-6 (16pt)

**KOHLER\***  
*Nipple*  
Plastic



Item #	Length (in)	Thread
ABRKO50366S	2 1/2	3/4-16

**KOHLER\***  
*Escutcheon*  
Chrome



Item #	O.D. (in)	I.D. (in)
ABRKO50373	2 1/2	3/4

**KOHLER\***  
*Escutcheon*  
Chrome



Item #	O.D. (in)	Height (in)	Thread
ABRKO50381	2 1/2	1 1/4	1 5/16-16

**KOHLER\***  
*Escutcheon*  
Chrome  
Trend



Item #	O.D. (in)	Height (in)	Thread
ABRKO50422	2 3/4	2 1/4	3/4-16

**KOHLER\***  
*Index Button*  
13/16" O.D.



Item #	H/C/D	Color
ABRKO77131H	Hot	Red
ABRKO77131C	Cold	Blue
ABRKO77131D	Diverter	Black

**KOHLER\***  
*Index Button*  
9/16" O.D.



• For ADA handle

Item #	H/C/D	Color
ABRKO77132H	Hot	Red
ABRKO77132C	Cold	Blue

**MILWAUKEE\***  
*Cartridge*  
Plastic

✓ NSF / ANSI 372  
Compliant



Item #	Length (in)	Broach	H/C
ABRMW11323	1 7/32		Hot

**MILWAUKEE\***  
*Cartridge*  
Plastic

✓ NSF / ANSI 372  
Compliant



Item #	Length (in)	Broach	H/C
ABRMW11324	1 7/32		Cold

**MILWAUKEE\***  
*Cartridge*  
Plastic

✓ NSF / ANSI 372  
Compliant



Item #	Length (in)	Broach	H/C
ABRMW11325	1 1/2		H or C

**MILWAUKEE\***  
*Cartridge*  
Plastic

✓ NSF / ANSI 372  
Compliant



Item #	Length (in)	Broach	H/C
ABRMW11326	2		H or C

**MILWAUKEE\***  
*Cartridge*  
Plastic

✓ NSF / ANSI 372  
Compliant



Item #	Length (in)	Broach	H/C
ABRMW11327	2 1/8		H or C

To Order Call: 1.800.767.5552 . Fax: 1.800.886.9831



# Quality Replacement Parts



## MILWAUKEE\*

*Stem  
Brass*



- With copper gasket

Item #	Length (in)	Broach	H/C
ABRMW21323	4 <sup>15</sup> / <sub>32</sub>	16pt	H or C

## MIXET\* Single Lever Cartridge Brass



- Includes sleeve

Item #	Length (in)	H/C
ABRMX21348-B	4 <sup>1</sup> / <sub>2</sub>	H or C

## MIXET\* Tub & Shower Handle Acrylic



Item #	Height (in)	Color
ABRMX404-16S	1	Smoke
ABRMX404-16C	1	Clear

## MIXET\* Tub & Shower Handle Chrome



- Lever Style

Item #	Length (in)
ABRMX404-17	3 <sup>7</sup> / <sub>8</sub>

## MIXET\* Tub & Shower Handle Acrylic



- Short lever style

Item #	Length (in)
ABRMX404-18	2 <sup>1</sup> / <sub>4</sub>

## MIXET\* Loop Handle Chrome



- Fits ABRMX21348
- Remove insert to fit most single lever cartridges with square broaches

Item #
ABRMX34103

## MIXET\* Escutcheon Chrome



Item #	O.D. (in)	I.D. (in)
ABRMX50337	5 <sup>1</sup> / <sub>2</sub>	1 <sup>1</sup> / <sub>4</sub>

## MOEN\* Cartridge Plastic Hi Flo



Item #	Length (in)	Broach
ABRMO11300	2 <sup>5</sup> / <sub>8</sub>	

## MOEN\* Cartridge Plastic



Item #	Length (in)	Broach	H/C
ABRMO11301	2 <sup>5</sup> / <sub>8</sub>		H or C

## MOEN\* Single Lever Cartridge Plastic

- Brass Core



Item #	Length (in)	Broach
ABRMO21304	3 <sup>15</sup> / <sub>16</sub>	

## MOEN\* Single Lever Cartridge Plastic



- Brass Core

Item #	Length (in)	Broach
ABRMO21304-LF	3 <sup>15</sup> / <sub>16</sub>	

## MOEN\* Single Lever Cartridge Brass



Item #	Length (in)	Broach
ABRMO21305	3 <sup>15</sup> / <sub>16</sub>	

## MOEN\* Single Lever Cartridge Brass



Item #	Length (in)	Broach
ABRMO21305-LF	3 <sup>15</sup> / <sub>16</sub>	

## MOEN\* Single Lever Cartridge Plastic Posi Temp

- Pressure balance



Item #	Length (in)	Broach
ABRMO21306	4 <sup>1</sup> / <sub>8</sub>	

## MOEN\* Diverter Handle Chrome Posi Temp



- Index included

Item #	Height (in)	Broach
ABRMO32701	1 <sup>1</sup> / <sub>4</sub>	

To Order Call: 1.800.767.5552 . Fax: 1.800.886.9831

\*Original Mfg's names are used for identification only and are not a representation that the items offered are genuine items of the original Mfg.

# Quality Replacement Parts

**MOEN\***  
**Tub & Shower**  
**Handle**  
Acrylic  
Boutique  
Legend



• For single handle faucet

Item #	Height (in)	Broach
ABRMO404-10L	1 $\frac{3}{4}$	□ (long)

**MOEN\***  
**Lavatory**  
**Handle**  
Acrylic  
Boutique  
Legend



• For single handle faucet

Item #	Height (in)	Broach
ABRMO404-10S	1 $\frac{3}{4}$	□ (short)

**MOEN\***  
**Tub & Shower**  
**Handle**  
Acrylic  
Chateau  
New Style



• For single handle faucet

Item #	Height (in)	Broach
ABRMO404-12L	1 $\frac{5}{8}$	□ (long)

**MOEN\***  
**Lavatory**  
**Handle**  
Acrylic  
Chateau  
New Style



• For single handle faucet

Item #	Height (in)	Broach
ABRMO404-12S	1 $\frac{5}{8}$	□ (short)

**MOEN\***  
**Handle**  
Acrylic  
Posi Temp



• For single handle faucet

Item #	Height (in)	Broach
ABRMO404-22L	1 $\frac{5}{8}$	□ (long)

**NIBCO\***  
**Cartridge**  
Plastic



Item #	Length (in)	Color	H/C	Broach
ABRNI11438	2.00	Black	C	3-7 (17pt)
ABRNI11439	2.00	White	H or C	3-7 (17pt)

**NIBCO\***  
**Cartridge**  
Plastic



Item #	Height (in)	Broach
ABRNI11440	4 $\frac{1}{16}$	⌋

**NIBCO\***  
**Tub & Shower**  
**Handle**  
Acrylic



Item #	Height (in)	Broach
ABRNI404-04	1 $\frac{5}{8}$	⌋

**NIBCO\***  
**Handle**  
**Pair**  
Acrylic



• Also fits American Brass, Phoenix & Streamway

Item #	Height (in)	Broach
ABRNI408-14	1 $\frac{1}{16}$	3-7 (17pt)

**NIBCO\***  
**Face Plate**  
Chrome



Item #
ABRNI50336

**NIBCO\***  
**Teardrop**  
**Escutcheon**  
**Plate**  
Chrome



Item #	Length (in)	Width (in)
ABRNI50343	4 $\frac{13}{16}$	3 $\frac{1}{8}$

**NIBCO\***  
**Escutcheon**  
**Extension**  
Plastic



Item #	Length (in)	Thread	Thread
ABRNI50338	2 $\frac{1}{16}$	1 $\frac{1}{16}$ -18	1 $\frac{5}{16}$ -18

**NIBCO\***  
**Stem**  
**Extension**  
Plastic



Item #	Length (in)	Internal Broach	External Broach
ABRNI50339	2 $\frac{1}{16}$	3-7 (17pt)	3-7 (17pt)



**PHOENIX\***  
**Stem**  
Brass



Item #	Length (in)	Broach	H/C
ABRPH11670-LF	1 $\frac{1}{16}$	3-7 (17pt)	H or C

**PHOENIX\***  
**Tub & Shower**  
**Handle**  
Acrylic  
Lucite



• Also fits American Brass, Nibco & Streamway

Item #	Height (in)	Broach
ABRPH32760	1 $\frac{3}{4}$	3-7 (17pt)

To Order Call: 1.800.767.5552 . Fax: 1.800.886.9831

# Quality Replacement Parts



**PHOENIX\***  
*Escutcheon*  
Chrome



Item #	O.D. (in)	Height (in)	Thread
ABRPH50328	2 3/4	1	1"-20

**PHOENIX\***  
*Flange*  
Chrome



Item #	O.D. (in)	Height (in)	Thread
ABRPH50333	1 3/8	2 3/8	1"-20

**PHOENIX\***  
*Flange*  
Chrome



Item #	O.D. (in)	Height (in)	Thread
ABRPH50334	1 7/8	2 3/4	1 1/16"-18



**PRICE PFISTER\***  
*Stem*  
Brass



• Includes gasket

Item #	Length (in)	Broach	H/C
ABRPP11635-LF	1 5/8	1-2 (12pt)	H or C



**PRICE PFISTER\***  
*Stem*  
Brass



• Nickel plated stem  
• Includes gasket

Item #	Length (in)	Broach	H/C
ABRPP11636-LF	1 15/16	1-2 (12pt)	Hot
ABRPP11637-LF	1 15/16	1-2 (12pt)	Cold

**PRICE PFISTER\***  
*Stem*  
Brass



• Includes gasket

Item #	Length (in)	Broach	H/C
ABRPP11640	2 1 1/2	1-12 (12pt)	H or C

**PRICE PFISTER\***  
*Diverter Stem*  
Brass



• Includes gasket

Item #	Length (in)	Broach
ABRPP11641	3 5/8	1-12 (12pt)

**PRICE PFISTER\***  
*Stem*  
Brass



• Chrome plated stem, includes gasket

Item #	Length (in)	Broach	H/C
ABRPP11665-LF	3 1/4	1-2 (12pt)	Hot
ABRPP11666-LF	3 1/4	1-2 (12pt)	Cold

**PRICE PFISTER\***  
*Stem*  
Ceramic



• Chrome plated unit, includes gasket

Item #	Length (in)	Broach	H/C
ABRPP11676-LF	1 3/4	1-2 (12pt)	H or C

**PRICE PFISTER\***  
*Single Lever Cartridge*  
Plastic  
Avante



Item #	Length (in)	Broach	H/C
ABRPP11691	4 7/8		H or C

**PRICE PFISTER\***  
*Stem*  
Brass



• Includes gasket

Item #	Length (in)	Broach	H/C
ABRPP21651	5 1/2	1-2 (12pt)	H or C

**PRICE PFISTER\***  
*Diverter Stem*  
Brass



• Includes gasket

Item #	Length (in)	Broach
ABRPP21652	5.50	1-12 (12pt)

**PRICE PFISTER\***  
*Stem*  
Brass



• Includes gasket

Item #	Size (in)	Broach	H/C
ABRPP21653	5 1/2	1-2 (12pt)	H or C

**PRICE PFISTER\***  
*Diverter Stem*  
Brass



• Includes gasket

Item #	Length (in)	Broach
ABRPP21654	5 1/2	1-12 (12pt)

**PRICE PFISTER\***  
*Diverter Stem*  
Brass



• Includes gasket

Item #	Length (in)	Broach
ABRPP21655	4 1/4	1-12 (12pt)

To Order Call: 1.800.767.5552 . Fax: 1.800.886.9831

\*Original Mfg's names are used for identification only and are not a representation that the items offered are genuine items of the original Mfg.



# Quality Replacement Parts

## PRICE PFISTER\*

*Diverter Stem  
Brass*



• Includes gasket

Item #	Length (in)	Broach
ABRPP21656	4 1/4	1-12 (12pt)

## PRICE PFISTER\*

*Stem  
Ceramic*



• Includes gasket

Item #	Length (in)	Broach	H/C
ABRPP21670	4 1/8	1-2 (12pt)	H or C

PRICE  
PFISTER\*  
*Tub & Shower  
Handle Pair  
Chrome  
Verve*



Item #	Height (in)	Broach
ABRPP32800	2 1/2	1-2 (12pt)

PRICE  
PFISTER\*  
*Diverter  
Handle  
Chrome  
Verve*



Item #	Height (in)	Broach
ABRPP32800D	2 1/2	1-2 (12pt)

PRICE  
PFISTER\*  
*Lav/Kit  
Handle Pair  
Chrome  
Verve  
New Style*



Item #	Height (in)	Broach
ABRPP32803	1 3/8	1-2 (12pt)

## PRICE PFISTER\*

*Kitchen  
Handle Pair  
Chrome  
Dome*



Item #	Height (in)	Broach
ABRPP32811	1 3/16	1-2 (12pt)

PRICE  
PFISTER\*  
*Tub & Shower  
Handle Pair  
Chrome  
Contempra*



Item #	Height (in)	Broach
ABRPP32840	2 1/2	1-2 (12pt)

PRICE  
PFISTER\*  
*Diverter  
Handle  
Chrome  
Contempra*



Item #	Height (in)	Broach
ABRPP32840D	2 1/2	1-2 (12pt)

PRICE  
PFISTER\*  
*Lav/Kit  
Handle Pair  
Chrome  
Contempra*



Item #	Height (in)	Broach
ABRPP32841	1 1/2	1-2 (12pt)

PRICE  
PFISTER\*  
*Diverter  
Handle  
Chrome  
Crown Imperial*



Item #	Height (in)	Broach
ABRPP32850D	3/4	1-2 (12pt)

## PRICE PFISTER\*

*Lav/Kit  
Handle Pair  
Chrome  
Crown Imperial*



Item #	Height (in)	Broach
ABRPP32860	7/8	1-2 (12pt)

PRICE  
PFISTER\*  
*Cross  
Handle Pair  
Chrome*



Item #	Height (in)	Broach
ABRPP32870	1 3/16	1-2 (12pt)

PRICE  
PFISTER\*  
*Diverter  
Handle  
Chrome*



Item #	Height (in)	Broach
ABRPP32870D	1 3/16	1-2 (12pt)

PRICE  
PFISTER\*  
*Tub & Shower  
Handle Pair  
Chrome  
Crown Imperial*



Item #	Height (in)	Broach
ABRPP32880	1 3/16	1-2 (12pt)

PRICE  
PFISTER\*  
*Lav/Kit  
Handle Pair  
Chrome  
Verve*



Item #	Height (in)	Broach
ABRPP32881	1 3/8	1-2 (12pt)

To Order Call: 1.800.767.5552 . Fax: 1.800.886.9831

# Quality Replacement Parts



**PRICE  
PFISTER\***  
*Lavatory  
Handle Pair  
Chrome  
Domel*



Item #	Height (in)	Broach
ABRPP32882	1 5/16	1-2 (12pt)

**PRICE  
PFISTER\***  
*Tub & Shower  
Handle Pair  
Chrome  
Verve  
New Style*



Item #	Height (in)	Broach
ABRPP32883	2 1/2	1-2 (12pt)

**PRICE  
PFISTER\***  
*Diverter  
Handle  
Chrome  
Verve  
New Style*



Item #	Height (in)	Broach
ABRPP32883D	2 1/2	1-2 (12pt)

**PRICE  
PFISTER\***  
*Face Plate  
Chrome*



Item #  
ABRPP35132

**PRICE  
PFISTER\***  
*Handle  
Chrome  
Flowmatic*



Item #	Height (in)	Broach
ABRPP37156	3 3/4	

**PRICE  
PFISTER\***  
*Tub & Shower  
Handle  
Acrylic  
Avante*



Item #	Height (in)	Broach
ABRPP404-09	2	

**PRICE  
PFISTER\***  
*Tub & Shower  
Handle  
Acrylic  
Avante Series  
08 & 09*



Item #	Height (in)	Broach
ABRPP404-23L	2	

**PRICE  
PFISTER\***  
*Tub & Shower  
Handle Pair  
Acrylic  
Windsor*

• Chrome plated  
index included



Item #	Height (in)	Broach
ABRPP408-17	2 7/8	1-2 (12pt)

**PRICE  
PFISTER\***  
*Diverter  
Handle  
Acrylic  
Windsor*

• Chrome plated  
index included



Item #	Height (in)	Broach
ABRPP408-17D	2 7/8	1-2 (12pt)

**PRICE  
PFISTER\***  
*Lav/Kit  
Handle Pair  
Acrylic  
Windsor*

• Chrome plated  
index included



Item #	Height (in)	Broach
ABRPP408-19	1 3/4	1-2 (12pt)

**PRICE  
PFISTER\***  
*Tub & Shower  
Handle Pair  
Acrylic  
Marquis*



Item #	Height (in)	Broach
ABRPP408-20	2 7/8	1-2 (12pt)

**PRICE  
PFISTER\***  
*Escutcheon  
Chrome*



Item #	O.D. (in)	Height (in)	Thread
ABRPP50342	2 1/2	1 11/16	2 1/32-18

**PRICE  
PFISTER\***  
*Escutcheon  
Chrome*



Item #	O.D. (in)	Height (in)	Thread
ABRPP50401	2 3/4	2 1/4	2 1/32-18

**PRICE  
PFISTER\***  
*Escutcheon  
Chrome*



Item #	O.D. (in)	Height (in)	Thread
ABRPP50402	2 1/2	2 1/2	1"-20



**After all is  
said and done....  
there's usually more said than  
done. ORDER NOW!**

To Order Call: 1.800.767.5552 . Fax: 1.800.886.9831

\*Original Mfg's names are used for identification only and are not a representation that the items offered are genuine items of the original Mfg.



# Quality Replacement Parts

**PRICE  
PFISTER\***  
*Escutcheon  
Chrome*

• See ABRPP50412  
for mating part



Item #	Length (in)	Width (in)	Height (in)
ABRPP50411	3 7/8	2 3/4	2 1/8

**PRICE  
PFISTER\***  
*Sleeve  
Plastic*

• See ABRPP50411  
for mating part



Item #	O.D. (in)	Height (in)	Thread
ABRPP50412	1 3/16	3/4	2 1/32-18

**PRICE  
PFISTER\***  
*Sleeve  
Chrome*

• See Fit-All ABRFA50326  
for mating part



Item #	O.D. (in)	Length (in)	Thread
ABRPP50413	1 1/4	3 1/4	1 13/64-18

**PRICE  
PFISTER\***  
*Sleeve  
Chrome*

• See Fit-All ABRFA50326  
for mating part



Item #	O.D. (in)	Length (in)	Thread
ABRPP50414	1 1/4	2	1 13/64-18

**PRICE  
PFISTER\***  
*Index  
Button  
1 9/16" O.D.  
04-09 Avante*



Item #
ABRPP704-09-1

**PRICE  
PFISTER\***  
*Index  
Button  
15/16" O.D.*



Item #	H/C/D
ABRPP77151H	Hot
ABRPP77151C	Cold
ABRPP77151D	Diverter

**PRICE  
PFISTER\***  
*Index  
Button  
Chrome  
Verve*



Item #	H/C/D
ABRPP77152H	Hot
ABRPP77152C	Cold
ABRPP77152D	Diverter

**PRICE  
PFISTER\***  
*Index  
Button  
1 1/8" O.D.*



Item #	H/C/D
ABRPP77155H	Hot
ABRPP77155C	Cold
ABRPP77155D	Diverter

**PRICE  
PFISTER\***  
*Nipple  
Plastic*



Item #	Length (in)	TPI
ABRPP213218L	2 3/4	2 1/32-18

**PRICE  
PFISTER\***  
*Hydro-Seal  
Seat Washer*

• Fits all Price Pfister Hydro-Seal units



Item #
ABRPP-SEAT

**SAVOY\***  
*Stem  
Brass*



• Chrome plated stem, includes gasket

Item #	Length (in)	Broach	H/C
ABRSV21961	5 1/8	1-13 (15pt)	H or C

**SAVOY\***  
*Stem  
Brass*



• Includes gasket

Item #	Length (in)	Broach	H/C
ABRSV21962	4 19/32	1-13 (15pt)	H or C

**SAVOY\***  
*Stem  
Brass*



• Chrome plated stem & sleeve

Item #	Length (in)	Broach	H/C
ABRSV21964	5 3/4	1-13 (15pt)	H or C

**SAVOY\***  
*Stem  
Brass*



• Chrome plated stem, sleeve  
• Includes gasket

Item #	Length (in)	Broach	H/C
ABRSV21968	5 13/16	1-13 (15pt)	H or C

**SAVOY\***  
*Stem  
Brass*



• Includes gasket

Item #	Length (in)	Broach	H/C
ABRSV21970	3 13/16	1-13 (15pt)	H or C

To Order Call: 1.800.767.5552 . Fax: 1.800.886.9831

# Quality Replacement Parts



**SAVOY\***  
**Diverter Stem**  
Brass



• Includes gasket

Item #	Length (in)	Broach
ABRSV21972	5 15/16	1-13 (15pt)

**SAVOY\***  
**Handle Pair**  
Chrome



Item #	Height (in)	Broach
ABRSV32911	1 3/8	1-13 (15pt)

**SAVOY\***  
**Diverter Handle**  
Chrome



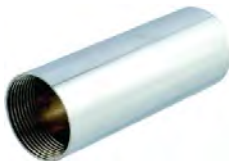
Item #	Height (in)	Broach
ABRSV32911D	1 3/8	1-13 (15pt)

**SAVOY\***  
**Cross Handle**  
Chrome



Item #	Height (in)	Broach
ABRSV33248	3/16	1-13 (15pt)

**SAVOY\***  
**Sleeve**  
Threaded



• See Fit-All  
ABRFA50330 for mating part

Item #	O.D. (in)	Length (in)	Thread
ABRSV50368	1 1/16	2 3/4	1"-20

**SAVOY\***  
**Escutcheon**  
Chrome



Item #	O.D. (in)	Height (in)	Thread
ABRSV52912	1 7/8	7/8	1 1/16"-18

✓ NSF / ANSI 372  
Compliant

**SAYCO\***  
**Stem**  
Brass



• Nickel plated gland

Item #	Length (in)	Broach	H/C
ABRSA11938-LF	1 17/32	2-3 (16pt)	Hot
ABRSA11939-LF	1 17/32	2-3 (16pt)	Cold

**SAYCO\***  
**Stem**  
Brass



Item #	Length (in)	Broach	H/C
ABRSA21951	4 1/2	2-3 (16pt)	Hot
ABRSA21952	4 1/2	2-3 (16pt)	Cold

**SAYCO\***  
**Diverter Stem**  
Brass



Item #	Length (in)	Broach
ABRSA21953	4 1/2	2-3 (16pt)

**SAYCO\***  
**Stem**  
Brass



• Includes gasket

Item #	Length (in)	Broach	H/C
ABRSA21957	4 15/16	2-3 (16pt)	H or C

**SAYCO\***  
**Tub & Shower Handle Pair**  
Chrome



Item #	Height (in)	Broach
ABRSA33030	2 1/4	2-3 (16pt)

**SAYCO\***  
**Diverter Handle**  
Chrome



Item #	Height (in)	Broach
ABRSA33030D	2 1/4	2-3 (16pt)

**SAYCO\***  
**Tub & Shower Handle Pair**  
Chrome

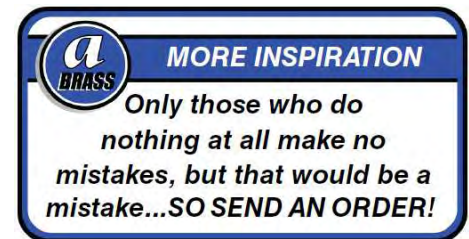


Item #	Height (in)	Broach
ABRSA33031	1 1/2	2-3 (16pt)

**SAYCO\***  
**Diverter Handle**  
Chrome



Item #	Height (in)	Broach
ABRSA33031D	1 1/2	2-3 (16pt)



To Order Call: 1.800.767.5552 . Fax: 1.800.886.9831

\*Original Mfg's names are used for identification only and are not a representation that the items offered are genuine items of the original Mfg.

**SAYCO\***  
*Lav/Kit*  
*Handle Pair*  
*Chrome*



Item #	Height (in)	Broach
ABRSA33033	1 $\frac{5}{8}$	2-3 (16pt)

**SAYCO\***  
*Escutcheon*  
*Chrome*



Item #	Length (in)	I.D. (in)	Width (in)
ABRSA50371	4 $\frac{5}{16}$	1 $\frac{1}{4}$	2 $\frac{13}{16}$

**SAYCO\***  
*Sleeve*  
*Chrome*



Item #	O.D. (in)	Length (in)	Thread
ABRSA50372	1 $\frac{7}{8}$	3	1 $\frac{1}{16}$ -20

**SAYCO\***  
*Escutcheon*  
*Chrome*



Item #	O.D. (in)	I.D. (in)	Height (in)
ABRSA50391	2 $\frac{3}{4}$	1 $\frac{1}{4}$	$\frac{5}{8}$

Send Your ABRASS Orders To:

BARRY E.  SR. CO.

Fax or E-mail:  
orderdesk@barrywalter.com

**SAYCO\***  
*Index*  
*Button*  
1 1/4" O.D.



Item #	H/C/D
ABRSA77162H	Hot
ABRSA77162C	Cold
ABRSA77162D	Diverter

**SPEAKMAN\***  
*Stem*  
*Ceramic*



Item #	Length (in)	Broach	H/C
ABRSP29200H	3 $\frac{3}{4}$	3-14 (20pt)	Hot
ABRSP29200C	3 $\frac{3}{4}$	3-14 (20pt)	Cold

**SPEAKMAN\***  
*Tub & Shower*  
*Handle Pair*  
*Chrome*



Item #	Height (in)	Broach
ABRSP33111	1 $\frac{3}{4}$	2-4 (20pt)

**SPEAKMAN\***  
*Diverter Handle*  
*Chrome*



Item #	Height (in)	Broach
ABRSP33111D	1 $\frac{3}{4}$	2-4 (20pt)

**STERLING\***  
*Stem*  
*Brass*



Item #	Length (in)	Broach	H/C
ABRSL11965	2 $\frac{3}{8}$	1-5 (16pt)	Hot

**STERLING\***  
*Stem*  
*Brass*



• Includes gasket

Item #	Size (in)	Broach	H/C
ABRSL21981	4 $\frac{11}{16}$	1-5 (16pt)	H or C

**STERLING\***  
*Diverter Stem*  
*Brass*



• Includes gasket

Item #	Length (in)	Broach
ABRSL21982	4 $\frac{5}{8}$	1-5 (16pt)

**STERLING\***  
*Stem*  
*Brass*



• Chrome plated stem, includes gasket

Item #	Length (in)	Broach	H/C
ABRSL21983	5 $\frac{3}{8}$	1-5 (16pt)	H or C

**STERLING\***  
*Stem*  
*Brass*



**STERLING\***  
*Diverter Stem*  
*Brass*



Item #	Length (in)	Broach
ABRSL21987	5 $\frac{1}{16}$	1-5 (16pt)

To Order Call: 1.800.767.5552 . Fax: 1.800.886.9831



# Quality Replacement Parts



## STERLING\*

*Stem  
Brass*



• Includes o-ring

Item #	Length (in)	Broach	H/C
ABRSL21994	4 1/2	Square	H or C

## STERLING\*

*Stem  
Brass*



• Includes o-ring

Item #	Length (in)	Broach	H/C
ABRSL21995	3 23/32	Square	H or C

## STERLING\*

*Handle Pair  
Chrome*



Item #	Height (in)	Broach
ABRSL32886	1/2	1-5 (16pt)

## STERLING\*

*Kit/Lav  
Handle Pair  
Chrome*



Item #	Height (in)	Broach
ABRSL32890	7/8	1-5 (16pt)

## STERLING\*

*Diverter  
Handle  
Chrome*



Item #	Height (in)	Broach
ABRSL32890D	7/8	1-5 (16pt)

## STERLING\*

*Handle Pair  
Chrome*



Item #	Height (in)	Broach
ABRSL33210	1 1/2	1-5 (16pt)

## STERLING\*

*Diverter  
Handle  
Chrome*



Item #	Height (in)	Broach
ABRSL33210D	1 1/2	1-5 (16pt)

## STERLING\*

*Handle Pair  
Chrome*



Item #	Height (in)	Broach
ABRSL33240	1 1/4	1-5 (16pt)

## STERLING\*

*Kit/Lav  
Handle Pair  
Chrome*



Item #	Height (in)	Broach
ABRSL33241	1 1/4	1-5 (16pt)

## STERLING\*

*Diverter  
Handle  
Chrome*



Item #	Height (in)	Broach
ABRSL33241D	1 1/4	1-5 (16pt)

## STERLING\*

*Handle Pair  
Chrome*



Item #	Height (in)	Broach
ABRSL33242	1 1/2	1-5 (16pt)

## STERLING\*

*Diverter  
Handle  
Chrome*



Item #	Height (in)	Broach
ABRSL33242D	1 1/2	1-5 (16pt)

## STERLING\*

*Handle Pair  
Chrome*



Item #	Height (in)	Broach
ABRSL33243	2 1/4	1-5 (16pt)

## STERLING\*

*Diverter  
Handle  
Chrome*



Item #	Height (in)	Broach
ABRSL33243D	2 1/4	1-5 (16pt)

## STERLING\*

*Handle Pair  
Chrome*



Item #	Height (in)	Broach
ABRSL33245	5/6	1-5 (16pt)

To Order Call: 1.800.767.5552 . Fax: 1.800.886.9831

\*Original Mfg's names are used for identification only and are not a representation that the items offered are genuine items of the original Mfg.

# Quality Replacement Parts

**STERLING\***  
*Handle Pair*  
Acrylic



Item #	Height (in)	Broach
ABRSL408-11	2 1/8	Square

**STERLING\***  
*Diverter*  
*Handle*  
Acrylic



Item #	Height (in)	Broach
ABRSL408-11D	2 1/8	Square

**STERLING\***  
*Lavatory*  
*Handle Pair*  
Acrylic



Item #	Height (in)	Broach
ABRSL408-12	2 1/8	1-5 (16pt)

**STERLING\***  
*Tub & Shower*  
*Handle Pair*  
Acrylic



Item #	Height (in)	Broach
ABRSL408-44	2 3/8	1-5 (16pt)

**STERLING\***  
*Diverter*  
*Handle*  
Acrylic



Item #	Height (in)	Broach
ABRSL408-44D	2 3/8	1-5 (16pt)

**STERLING\***  
*Nipple*  
Plastic



Item #	Length (in)	TPI
ABRSL50366L	2 1/16	3/4-16

**STERLING\***  
*Escutcheon*  
Chrome



Item #	O.D. (in)	Height (in)	Thread
ABRSL50375	2 1/4	1 5/32	1 1/8-18

**STERLING\***  
*Escutcheon*  
Chrome



Item #	O.D. (in)	Height (in)	Thread
ABRSL50376	2 1/4	3/16	1 1/8-20

**STERLING\***  
*Escutcheon*  
Chrome



Item #	O.D. (in)	Height (in)	Thread
ABRSL50388	2 1/2	1	1 1/2-20

**STERLING\***  
*Sleeve*  
Chrome

• See ABRFA50326 for mating part



Item #	O.D. (in)	Length (in)	Thread
ABRSL50423	1 1/4	2 1/8	1 1/2-28

**STERLING\***  
*Sleeve*  
Chrome

• See ABRFA50326 for mating part



Item #	O.D. (in)	Length (in)	Thread
ABRSL50424	1 1/4	2 1/2	1 1/2-28

**STERLING\***  
*Index Button*  
1 1/8" O.D.



Item #	H/C/D
ABRSL77171H	Hot
ABRSL77171C	Cold
ABRSL77171D	Diverter

**STERLING\***  
*Index Button*  
1 1/8" O.D.



Item #	H/C/D
ABRSL77172H	Hot
ABRSL77172C	Cold
ABRSL77172D	Diverter

**STERLING\***  
*Index Button*  
1 9/16" O.D.



Item #
ABRSL77173

## STREAMWAY\*

*Stem*  
Brass



✓ NSF / ANSI 372 Compliant

• Includes gasket

Item #	Length (in)	Broach	H/C
ABRSW11911-LF	1 5/8	3-7 (17pt)	Hot
ABRSW11912-LF	1 5/8	3-7 (17pt)	Cold

To Order Call: 1.800.767.5552 . Fax: 1.800.886.9831

# Quality Replacement Parts



## STREAMWAY\* Handle Pair Chrome

- Also fits American Brass, Nibco & Phoenix



Item #	Height (in)	Broach
ABRSW32900	1 7/8	3-7 (17pt)

## STREAMWAY\* Handle Pair Chrome

- Also fits American Brass, Nibco & Phoenix



Item #	Height (in)	Broach
ABRSW33330	1 1/4	3-7 (17pt)

## SYMMONS\* Tub & Shower Handle Chrome Temptrol

- See ABRSY77210 for index button
- OEM#: T-31



Item #	Height (in)
ABRSY37210	1 1/4

## SYMMONS\* Tub & Shower Handle Chrome Safety Mix

- OEM#: RC-14



Item #	Height (in)	Skirt
ABRSY37220	1 1/2	Long

## SYMMONS\* Tub & Shower Handle Chrome Temptrol

- OEM#: RC-14X



Item #	Height (in)	Length (in)	Skirt
ABRSY37221	7/8	4 1/4	Short

## SYMMONS\* Diverter Handle Chrome Temptrol

- OEM#: T-30



Item #	Height (in)
ABRSY37230	2

## SYMMONS\* Kitchen Handle Chrome

- Single lever
- OEM#: K-3



Item #	Height (in)	Length (in)
ABRSY37231	1	4

## SYMMONS\* Lav Handle Chrome

- Single lever
- OEM#: L-2



Item #	Length (in)
ABRSY37232	3

## SYMMONS\* Index Button Chrome

- For ABRSY37210



Item #
ABRSY77210



## T & S\* Barrel Brass

- Also fits Binford



Item #	Length (in)	H/C
ABRTS12001-LF	1 17/32	Hot
ABRTS12002-LF	1 17/32	Cold

## T & S\* Brass Stem Assembly Compression Style

- Also fits Binford



Item #	Size (in)	Broach	H/C
ABRTS12007-LF	2 13/16	2-4 (20pt)	Hot
ABRTS12008-LF	2 13/16	2-4 (20pt)	Cold

## T & S\* Brass Stem Assembly Spring Check Style

- Includes gasket



Item #	Length (in)	Broach	H/C
ABRTS12009-LF	2 13/32	2-4 (20pt)	Hot
ABRTS12010-LF	2 13/32	2-4 (20pt)	Cold

## T & S\* Brass Stem Assembly Spring Check Style

- Also fits Binford
- Includes gasket



Item #	Size (in)	Broach	H/C
ABRTS12013-LF	2 13/32	2-4 (20pt)	Hot
ABRTS12014-LF	2 13/32	2-4 (20pt)	Cold

## T & S\* Brass Stem Assembly Compression Style

- Also fits Binford
- Includes gasket



Item #	Size (in)	Broach	H/C
ABRTS12015-LF	2 13/32	2-4 (20pt)	Hot
ABRTS12016-LF	2 13/32	2-4 (20pt)	Cold

## T & S\* Handle Pair Chrome

- Also fits Speakman



Item #	Width (in)	Broach
ABRTS32953	2 3/8	2-4 (20pt)

To Order Call: 1.800.767.5552 . Fax: 1.800.886.9831

\*Original Mfg's names are used for identification only and are not a representation that the items offered are genuine items of the original Mfg.



# Quality Replacement Parts

## T & S\* Diverter Handle Chrome



- Also fits Speakman

Item #	Width (in)	Broach
ABRTS32953D	2 3/8	2-4 (20pt)

## T & S\* ADA Handle Pair Chrome



- Also fits Speakman

Item #	Length (in)	Broach
ABRTS32954	4	2-4 (20pt)

## T & S\* Handle Chrome



- Also fits Binford & Speakman

Item #	Length (in)	Broach	H/C
ABRTS33410H	2 1/4	2-4 (20pt)	Hot
ABRTS33410C	2 1/4	2-4 (20pt)	Cold
ABRTS33410	2 1/4	2-4 (20pt)	Pair

## T & S\* Index Button 5/8" O.D.



Item #	H/C	Color
ABRTS77178H	Hot	Red
ABRTS77178C	Cold	Blue

## T & S\* Index Ring 9/16" O.D.



- Also fits Binford

Item #	H/C	Color
ABRTS77190H	Hot	Red
ABRTS77190C	Cold	Blue

✓ NSF / ANSI 372  
Compliant

## T & S\* Hose Pre-Rinse



- Also fits Binford pre-rinse units
- Includes T&S, Fisher & Chicago adapters

Item #	Length (in)
ABR3612-HOSE-LF	44

✓ NSF / ANSI 372  
Compliant

## T & S\* Spray Head Pre-Rinse



- Also fits Binford pre-rinse units

Item #
ABR3612-SPRAY-LF

## T & S\* Spring Pre-Rinse



- Also fits Binford, T&S, Chicago, CHG & Fisher

Item #	Length (mm)
ABR3612-SPRING	670

✓ NSF / ANSI 372  
Compliant

## T & S\* Vacuum Breaker Kit



- For SVC Faucets
- Fits ABF3050 & ABF3055

Item #
ABRTSKIT-VB-LF

## UNION BRASS\* Stem Brass



✓ NSF / ANSI 372  
Compliant

- Includes gasket

Item #	Length (in)	Broach	H/C
ABRUN12101-LF	1 1/16	3-3 (18pt)	Hot
ABRUN12102-LF	1 1/16	3-3 (18pt)	Cold

## UNION BRASS\* Stem Ceramic



✓ NSF / ANSI 372  
Compliant

- Includes gasket

Item #	Length (in)	Broach	H/C
ABRUN12156-LF	1 7/16	3-3 (18pt)	Hot
ABRUN12157-LF	1 7/16	3-3 (18pt)	Cold

## UNION BRASS\* Stem Ceramic



- Flip plastic stop for ADA cold stem
- Includes gasket

Item #	Length (in)	Broach	H/C
ABRUN22109	3 5/16	3-3 (18pt)	H or C

## UNION BRASS\* Stem Brass



- Includes gasket

Item #	Size (in)	Broach	H/C
ABRUN22110	3 3/4	3-3 (18pt)	Hot
ABRUN22111	3 3/4	3-3 (18pt)	Cold

## UNION BRASS\* Stem Brass



- Includes gasket

Item #	Size (in)	Broach	H/C
ABRUN22112	3 3/16	3-3 (18pt)	Hot
ABRUN22113	3 5/16	3-3 (18pt)	Cold

## UNION BRASS\* Diverter Stem Brass



Item #	Length (in)	Broach
ABRUN22117	4 3/8	D

To Order Call: 1.800.767.5552 . Fax: 1.800.886.9831

# Quality Replacement Parts



## UNION BRASS\* Diverter Stem Brass



Item #	Length (in)	Broach
ABRUN22119	4 $\frac{3}{4}$	D

## UNION BRASS\* Handle Pair Chrome



• Also fits Briggs & Indiana

Item #	Height (in)	Broach
ABRUN33510	1 $\frac{5}{16}$	3-3 (18pt)

## UNION BRASS\* Diverter Handle Chrome



• Also fits Briggs & Indiana

Item #	Height (in)	Broach
ABRUN33510D	1 $\frac{5}{16}$	3-3 (18pt)

## UNION BRASS\* Diverter Handle Chrome



Item #	Height (in)	Broach
ABRUN33510DA	1 $\frac{5}{16}$	"D"

## UNION BRASS\* Kitchen Handle Pair Chrome



• Also fits Briggs & Indiana

Item #	Height (in)	Broach
ABRUN33511	1 $\frac{1}{4}$	3-3 (18pt)

## UNION BRASS\* Lavatory Handle Pair Chrome



• Also fits Briggs & Indiana

Item #	Height (in)	Broach
ABRUN33512	1	3-3 (18pt)

## UNION BRASS\* Diverter Handle Chrome



• Also fits Briggs & Indiana

Item #	Height (in)	Broach
ABRUN33513D	1 $\frac{3}{8}$	3-3 (18pt)

## UNION BRASS\* Lav/Kit Handle Pair Chrome



• Also fits Briggs & Indiana

Item #	Height (in)	Broach
ABRUN33530	1	3-3 (18pt)

## UNION BRASS\* Handle Pair Chrome



• Also fits Briggs & Indiana

Item #	Height (in)	Broach
ABRUN33531	1 $\frac{15}{16}$	3-3 (18pt)

## UNION BRASS\* Tub & Shower Handle Pair Chrome



• Also fits Briggs & Indiana

Item #	Height (in)	Broach
ABRUN33532	1 $\frac{1}{4}$	3-3 (18pt)

## UNION BRASS\* Escutcheon Chrome



• For mating part  
see ABRUN50442

Item #	O.D. (in)	I.D. (in)	Height (in)
ABRUN50441	1 $\frac{3}{8}$	$\frac{3}{4}$	1 $\frac{3}{8}$

## UNION BRASS\* Sleeve Chrome



• For mating part  
see ABRUN50441

Item #	Length (in)	Thread
ABRUN50442	1 $\frac{1}{8}$	$\frac{5}{8}$ -24

## UNION BRASS\* Nipple Brass



Item #	Length (in)	TPI
ABRUN50443	1 $\frac{3}{8}$	$\frac{5}{8}$ -24

## VALLEY\* Cartridge Plastic

✓ NSF / ANSI 372  
Compliant



Item #	Length (in)	Broach	H/C
ABRVA12241	2 $\frac{17}{32}$	D	H or C

## VALLEY\* Single Lever Cartridge Plastic 404-20



• Use with spray

Item #	Size (in)	Broach
ABRVA12246	2 $\frac{3}{8}$	□

To Order Call: 1.800.767.5552 . Fax: 1.800.886.9831

\*Original Mfg's names are used for identification only and are not a representation that the items offered are genuine items of the original Mfg.

**VALLEY\***  
**Single Lever Cartridge**  
Plastic



• Use without spray

Item #	Length (in)	Broach
ABRVA12247	2 $\frac{7}{8}$	○

**VALLEY\***  
**Cartridge**  
Plastic



Item #	Length (in)	Broach	H/C
ABRVA12248	2 $\frac{7}{8}$	○	H or C

**VALLEY\***  
**Cartridge**  
Plastic



NSF / ANSI 372  
Compliant



Item #	Length (in)	Broach	H/C
ABRVA12249	1 $\frac{27}{32}$	D	H or C

**VALLEY\***  
**Handle**  
Chrome



Item #	Broach	Type
ABRVA33810	○	Old Style

**VALLEY\***  
**Handle**  
Chrome



Item #	Broach	Type
ABRVA33811	○	New Style

**VALLEY\***  
**Tub & Shower**  
**Handle**  
Acrylic



Item #	Height (in)	Broach	Type
ABRVA404-15	1 $\frac{3}{8}$	○	Old Style

**VALLEY\***  
**Tub & Shower**  
**Handle**  
Acrylic



• Ring and set  
screw included

Item #	Height (in)	Broach	Type
ABRVA404-21	1 $\frac{3}{8}$	○	New Style

**VALLEY\***  
**Tub & Shower**  
**Handle Pair**  
Acrylic



Item #	Height (in)	Broach
ABRVA408-01	3	D

**VALLEY\***  
**Lav/Kit**  
**Handle Pair**  
Acrylic



Item #	Height (in)	Broach
ABRVA408-02	1 $\frac{3}{4}$	D

**VALLEY\***  
**Index Button**  
1" O.D.



• Fits ABRVA404-21

Item #
ABRVA704-20-1

**VALLEY\***  
**Index Button**  
1" O.D.



Item #	H/C
ABRVA7408-01BNC	Cold
ABRVA7408-01BNH	Hot

**VALLEY\***  
**Seat**  
**Kit**



• Inserts and springs  
included

Item #
ABRVA-KIT1

**WOODFORD\***  
**Wall Hydrant**  
**Handle**  
Metal



• For models 14 & 17

Item #
ABRWF32061

Send Your ABRASS Orders To:

BARRY E.  SR. CO.

Fax or E-mail:  
orderdesk@barrywalter.com

To Order Call: 1.800.767.5552 . Fax: 1.800.886.9831



# Quality Replacement Parts

## GLACIER BAY\*

### Cartridge Ceramic



- Also fits various manufacturers

Item #	Length (in)	Broach	H/C
ABRCC19019-LF	1 7/8	3-18 (24pt)	Hot
ABRCC19020-LF	1 7/8	3-18 (24pt)	Cold

## GLACIER BAY\*

### Cartridge Ceramic



- Also fits various manufacturers

Item #	Length (in)	Broach	H/C
ABRIM13801-LF	1 7/8	"D"	Hot
ABRIM13802-LF	1 7/8	"D"	Cold



## PRICE PFISTER\*

### Single Lever Cartridge Ceramic

- OEM: 974-074
- Also fits various manufacturers



Item #	Dia.	Height
ABRCC19001	25mm	50mm



## IMPORT Hot or Cold Cartridge Ceramic

- OEM: GL02GJ-004
- Fits various manufacturers



Item #	Dia.	Height
ABRCC19002	25mm	49mm



## IMPORT Diverter Cartridge Ceramic

- with brass spindle
- Fits various manufacturers



Item #	Dia.	Height
ABRCC19003	22mm	42mm

## Single Lever Cartridge Ceramic



Item #	Dia.	Height
Use ABRCC19006	35mm	56mm



## SAYCO\* Single Lever Cartridge Ceramic

- Also fits Eljer, Ez-Flo and others



Item #	Dia.	Height
ABRCC19006	35mm	57mm

## Single Lever Cartridge Ceramic



Item #	Dia.	Height
Use ABRCC19006	35mm	57mm



## PRICE PFISTER\* Single Lever Cartridge Ceramic

- Also fits Delta, Kingston and others



Item #	Dia.	Height
ABRCC19008	35mm	70mm



## IMPORT Single Lever Cartridge Ceramic

- Fits various manufacturers



Item #	Dia.	Height
ABRCC19010	35mm	71mm



## IMPORT Single Lever Cartridge Ceramic

- Fits various manufacturers



Item #	Dia.	Height
ABRCC19011	35mm	58mm



## SYMMONS\* Single Lever Cartridge Ceramic

- Also fits Zurn RK7440, Ez-Flo, Union Brass & others



Item #	Dia.	Height
ABRCC19012	40mm	63mm

## JADO\* Single Lever Cartridge Ceramic



Item #	Dia.	Height
Use ABRCC19012	40mm	63mm



## PRICE PFISTER\* Single Lever Cartridge Ceramic

- Also fits Danze & others



Item #	Dia.	Height
ABRCC19014	40mm	76mm



## EZ-FLO\* Single Lever Pressure Balance Cartridge Ceramic

- Also fits ProFlo & others



Item #	Dia.	Height
ABRCC19015	40mm	87mm

To Order Call: 1.800.767.5552 . Fax: 1.800.886.9831

\*Original Mfg's names are used for identification only and are not a representation that the items offered are genuine items of the original Mfg.

# Quality Replacement Parts

✓ NSF / ANSI 372  
Compliant

## IMPORT Single Lever Cartridge Ceramic

- Fits various manufacturers



Item #	Dia.	Height
ABRCC19016	40mm	74mm

✓ NSF / ANSI 372  
Compliant

## IMPORT Single Lever Cartridge Ceramic

- Fits various manufacturers



Item #	Dia.	Height
ABRCC19017	40mm	61mm

## HUNTINGTON\*

### Single Lever Pressure Balance Cartridge Ceramic

- 13/32" square broach



Item #	Dia.	Height
ABRCC19023	40mm	79mm

## HUNTINGTON\*

### Single Lever Pressure Balance Cartridge Ceramic

- 23/64" square broach



Item #	Dia.	Height
ABRCC19023SP	40mm	79mm



Item #	Dia.	Height
ABRCC19024	40mm	78mm

## ZURN\* Single Lever Pressure Balance Cartridge Ceramic

- OEM: RK7300-CART-3P
- Also fits Glacier Bay & others



Item #	Dia.	Height
ABRCC19025	40mm	75mm

## HARRINGTON\*

### Single Lever Pressure Balance Cartridge Ceramic



Item #	Dia.	Height
Use ABRCC19025	40mm	75mm

## HYDROPLAST

### Single Lever Cartridge Ceramic

- OEM: B35
- Also fits Jado, Jaclo & others

✓ NSF / ANSI 372  
Compliant



Item #	Dia.	Height
ABRCC19026	36mm	58mm

## CONCINNITY/ JACLO\*

### Single Lever Cartridge Ceramic

✓ NSF / ANSI 372  
Compliant



Item #	Dia.	Height
ABRCC19027	35mm	57mm

✓ NSF / ANSI 372  
Compliant

## PAIJO Single Lever Cartridge Ceramic

- Fits various manufacturers



Item #	Dia.	Height
ABRCC19028	25mm	61mm

## SEASONS\* Single Lever Pressure Balance Cartridge Ceramic

- Also fits Glacier Bay & others



Item #	Dia.	Height
ABRCC19029	40mm	130mm

## HUNTINGTON

### Single Lever Pressure Balance Cartridge

- OEM: ST5000C



Item #	Dia.	Height
ABRCC19030	47mm	89mm

## HUNTINGTON

### Single Lever Cartridge

✓ NSF / ANSI 372  
Compliant

- OEM: ST5000



Item #	Height
ABRCC19031	51mm

## GLACIER BAY/ PEGASUS\*

### Single Lever Pressure Balance Cartridge Ceramic

- OEM: 10321
- Also fits Premier & others



Item #	Dia.	Height
ABRCC19032	40mm	75mm

## GLACIER BAY\*

### Single Lever Pressure Balance Cartridge Ceramic

- Also fits Aqua Source



Item #	Dia.	Height
ABRCC19033	40mm	83mm

To Order Call: 1.800.767.5552 . Fax: 1.800.886.9831



# Quality Replacement Parts



## HYDROPLAST Single Lever Cartridge Ceramic



NSF / ANSI 372  
Compliant

- OEM: G35
- Also fits Kohler, Wolverine & others



Item #	Dia.	Height
ABRCC19034	35mm	57mm

## HYDROPLAST Single Lever Cartridge Ceramic



NSF / ANSI 372  
Compliant

- OEM: GX35
- Also fits Kohler & others



Item #	Dia.	Height
ABRCC19035	35mm	70mm

## HYDROPLAST Single Lever Cartridge Ceramic



NSF / ANSI 372  
Compliant

- OEM: G40
- Fits various manufactures



Item #	Dia.	Height
ABRCC19036	40mm	64mm



NSF / ANSI 372  
Compliant

## PRICE PFISTER\* Single Lever Cartridge Ceramic

- OEM: 974-505



Item #	Dia.	Height
ABRCC19037	35mm	63mm



NSF / ANSI 372  
Compliant

## PRICE PFISTER\* Single Lever Cartridge Ceramic

- OEM: 974-0350



Item #	Dia.	Height
ABRCC19038	35mm	63mm

## SAYCO Single Lever Pressure Balance Cartridge Ceramic

- OEM: P1070



Item #	Dia.	Height
ABRCC19039	38mm	78mm

## SAYCO Single Lever Pressure Balance Cartridge Ceramic

- OEM: P1071
- Also fits Kingston & Webstone



Item #	Dia.	Height
ABRCC19040	38mm	76mm

## SAYCO\* Single Lever Pressure Balance Cartridge Ceramic

- OEM: R200CC



Item #	Dia.	Height
ABRCC19041	46mm	85mm



NSF / ANSI 372  
Compliant

## SAYCO Single Lever Pressure Balance Cartridge Ceramic

- OEM: P1050



Item #	Dia.	Height
ABRCC19042	38mm	62mm

## SAYCO Single Lever Pressure Balance Cartridge Ceramic

- OEM: P1079



Item #	Dia.	Height
ABRCC19043	38mm	88mm



NSF / ANSI 372  
Compliant

## STARLIGHT\* Single Lever Pressure Balance Cartridge Ceramic

- Also fits Moen & others



Item #	Dia.	Height
ABRCC19044	40mm	63mm

## CFG\* Single Lever Pressure Balance Cartridge Ceramic

- OEM: 40068



Item #	Dia.	Height
ABRCC19045	40mm	76mm

## CFG\* Single Lever Pressure Balance Cartridge Ceramic

- OEM: 40069



Item #	Dia.	Height
ABRCC19046	40mm	76mm

## PRO FLO Single Lever Pressure Balance Cartridge Ceramic

- OEM: ACF3001CRT



Item #	Dia.	Height
ABRCC19047	40mm	85mm

## WOLVERINE Single Lever Pressure Balance Cartridge Ceramic



Item #	Dia.	Height
ABRCC19048	40mm	84mm

To Order Call: 1.800.767.5552 . Fax: 1.800.886.9831

\*Original Mfg's names are used for identification only and are not a representation that the items offered are genuine items of the original Mfg.





**WOLVERINE**  
*Single Lever  
Cartridge  
Ceramic*



Item #	Dia.	Height
ABRCC19049	35mm	58mm

**EZ-FLO\***  
*Single Lever  
Pressure Balance  
Cartridge  
Ceramic*

- Also fits ProFlo, Gerber & others



Item #	Dia.	Height
ABRPBCV	40mm	85mm



**GERBER\***  
*Tub &  
Shower  
Cartridge*

- OEM: 95-154
- Also fits B&K, Matco-Norca & others



Item #
ABRPBCV-CTG

**GERBER\***  
*Mixer  
Single Lever*

- OEM: 95-152
- For pressure balance control valve
- Also fits B&K, EZ-Flo & others



Item #
ABRPBCV-MIX

**SAYCO\***  
*Mixer  
Single Lever*

- Also fits Huntington



Item #
ABRCC-MIX

**Temperature  
Setting Ring  
Rubber**

- Use with ABRP-BCV-CTG
- For pressure balance control valve



Item #
ABRPBCV-RING

## Single Lever Handles

**SAYCO\***  
*Lav / T&S  
Handle  
Chrome*

- Fits most single lever cartridges with square broaches



Item #	Broach
ABRSA33038	<input type="checkbox"/>

**BINFORD\***  
*Loop Handle  
Chrome*

- Fits Binford 5371L faucet
- Fits ABRPBCV-CTG



Item #
ABR5371L-HDL

**BINFORD\***  
*Lav / T&S  
Handle  
Chrome*

- Fits Binford 5310LS & 5510LS faucets
- Also fits most faucets that use the Delta #70 ball



Item #	Broach
ABR5510LS-HDL	<input type="radio"/>

**MIXET\***  
*Loop Handle  
Chrome*

- Fits ABRMX21348
- Remove insert to fit most single lever cartridges with square broaches



Item #	Length (in)
ABRMX34103	3 1/4

To Order Call: 1.800.767.5552 . Fax: 1.800.886.9831

# Quality Replacement Parts



## Drinking Fountain Parts



### HAWS\*

#### Bubbler Head Drinking Fountain

- Solid brass
- Chrome finish



Item #	IPS Inlet (in)
ABRCBF360-LF	3/8



### ELKAY\*

#### Metal Cartridge Drinking Fountain

- Fits various manufacturers



Item #
ABRCBF360-3-LF



### IMPORT

#### Plastic Cartridge Drinking Fountain

- Fits various manufacturers



Item #
ABRCBF360-3-P

#### Bubbler Head Drinking Fountain W/ Flange & Shank



Item #
ABRCBF360-KIT-LF



#### Drinking Fountain Valve Retro Kit w/o Cartridge

- Push activated, labeled "IN" & "OUT" for supply line placement
- Replaces OEM housing & retainer nut



Item #
LF124620



#### Drinking Fountain Valve Retro Kit with Cartridge

- Push activated, labeled "IN" & "OUT" for supply line placement
- Replaces OEM#: Haws: 5874SS  
Acorn: 7000-050-001 & Others



Item #
LF124640

## Faucet Repair Parts

#### Cartridge Plastic



Item #	Length (in)	Broach	H/C	Color
ABRCTG-LEV-HOT	2	"D"	H	Red
ABRCTG-LEV-COLD	2	"D"	C	White

#### Diverter Stem Plastic



- Fits Premier
- See ABR1300DIVBOOT for mating part

Item #	Length (in)	Broach
ABR1300DIV	3 1/4	"D"

#### PREMIER\* Replacement Boot Rubber

- See ABR1300DIV for mating part



Item #
ABR1300DIVBOOT



#### Aerator Male



Item #	Size (in)	Finish
ABRPBAERATOR-LF	1 5/16	Polished Brass
ABRCPAERATOR-LF	1 5/16	Chrome

#### Spray Hose Escutcheon Kitchen



Item #
ABRSPRAY-ESC



#### Spray Hose Kitchen

- Hose only



Item #	Length (in)
ABRSPRAY-HOSE	48



#### Spray Nozzle Kitchen



Item #
ABRSPRAY-NOZZLE

## Supply Stops

#### Supply Stop 1/4 Turn, Straight



Item #	Inlet/FIP (in)	Outlet/Comp (in)
ABRBV12F38CS-LF	1/2	3/8

To Order Call: 1.800.767.5552 . Fax: 1.800.886.9831

\*Original Mfg's names are used for identification only and are not a representation that the items offered are genuine items of the original Mfg.

# Quality Replacement Parts

**Supply Stop**  
1/4 Turn,  
Straight



Item #	Inlet/FIP (in)	Outlet/ Comp (in)
ABRBV12F38CS	1/2	3/8
ABRBV12F12CS	1/2	1/2

**Supply Stop**  
1/4 Turn,  
Straight

✓ NSF / ANSI 372  
Compliant



Item #	Inlet/ Comp (in)	Outlet/ Comp (in)
ABRBV58C38CS-LF	5/8	3/8
ABRBV58C12CS-LF	5/8	1/2

**Supply Stop**  
1/4 Turn,  
Straight



Item #	Inlet/ Comp (in)	Outlet/ Comp (in)
ABRBV58C38CS	5/8	3/8
ABRBV58C12CS	5/8	1/2

**Supply Stop**  
1/4 Turn,  
Angle

✓ NSF / ANSI 372  
Compliant



Item #	Inlet/ Comp (in)	Outlet/ Comp (in)
ABRBV58C38CA-LF	5/8	3/8

**Supply Stop**  
1/4 Turn,  
Angle



Item #	Inlet/ Comp (in)	Outlet/ Comp (in)
ABRBV58C12CA	5/8	1/2

**Supply Stop**  
1/4 Turn,  
Angle

✓ NSF / ANSI 372  
Compliant



Item #	Inlet/FIP (in)	Outlet/ Comp (in)
ABRBV12F38CA-LF	1/2	3/8

**Supply Stop**  
1/4 Turn,  
Angle



Item #	Inlet/FIP (in)	Outlet/ Comp (in)
ABRBV12F12CA	1/2	1/2

**Supply Stop**  
Compression,  
Straight

✓ NSF / ANSI 372  
Compliant



Item #	Inlet/ Comp (in)	Outlet/ Comp (in)
ABR58C38CS-LF	5/8	3/8
ABR38C38CS-LF	3/8	3/8

**Supply Stop**  
Compression,  
Straight



Item #	Inlet/ Comp (in)	Outlet/ Comp (in)
ABR58C38CS	5/8	3/8
ABR12C12CS	1/2	1/2

**Supply Stop**  
FIP x  
Compression,  
Straight



Item #	Inlet (in)	Outlet/ Comp (in)
ABR12F12CS	1/2	1/2
ABR12F38CS	1/2	3/8

**Supply Stop**  
Comp x FIP,  
Straight

✓ NSF / ANSI 372  
Compliant



Item #	Inlet/FIP (in)	Outlet/ Comp (in)
ABR12F38CA-LF	1/2	3/8
ABR38F38CA-LF	3/8	3/8
ABR12F12CA-LF	1/2	1/2

**Supply Stop**  
Compression,  
Angle

✓ NSF / ANSI 372  
Compliant



Item #	Inlet/ Comp (in)	Outlet/ Comp (in)
ABR58C38CA-LF	5/8	3/8

**Supply Stop**  
Compression,  
Angle



Item #	Inlet/ Comp (in)	Outlet/ Comp (in)
ABR58C38CA	5/8	3/8
ABR58C12CA	5/8	1/2

## Tub & Shower

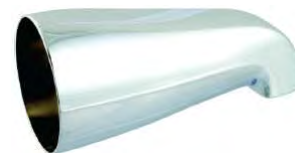
**Diverter**  
Gate  
Plastic

• Chrome knob



Item #
ABRAB1200

**Tub**  
Spout  
Chrome  
Plated Zinc



Item #	Size (in)
ABRAB1201	1/2" FIP Front

To Order Call: 1.800.767.5552 . Fax: 1.800.886.9831



# Quality Replacement Parts



**Diverter  
Spout**  
Chrome  
Plated Zinc



Item #	Size (in)
ABRAB1211	½" FIP Front

**Diverter  
Spout**  
Chrome  
Plated Zinc



Item #	Size (in)
ABRAB1213	½ or ¾ Adjustable

**Diverter  
Spout**  
Chrome  
Plated Zinc



Item #	Size (in)
ABRAB1221	½ or ¾ Adjustable

**Diverter  
Spout**  
Chrome  
Plated Zinc



- Includes male adapter

Item #	Size (in)
ABRAB1224	½ or ¾ Adjustable

**Diverter  
Spout**  
Chrome  
Plated Zinc



- Includes female adapter

Item #	Size (in)
ABRAB1225	½ or ¾ Adjustable

**Tub  
Spout**  
Chrome  
Plated Zinc



- Slip-fit
- Includes set screw

Item #	Description
ABRAB1230	Clamps over ½" copper

**Diverter  
Spout**  
Chrome  
Plated Zinc



- Includes slip connect for copper and set screw

Item #	Size (in)
ABRAB1231	½" Front

**Diverter  
Spout**  
Chrome  
Plated Zinc



- Includes male adapter

Item #	Description
ABRAB1240	½ & ¾ Wall End

**Tub  
Spout**  
Chrome  
Plated Zinc



- Adjustable to 2"

Item #	Description
ABRAB1243	Clamps over ½" copper

**Tub  
Spout**  
Chrome  
Plated Zinc



Item #	Size (in)
ABRAB1245	½ & ¾ IPS Front

**Diverter  
Spout**  
Chrome



Item #	Size (in)
ABRAB1250	½ & ¾ Wall End

**Face Plate**  
Chrome



Item #	Description
ABRAB5120	Face Plate & Screws
ABRSCP5120	1 ½" Screws

**Tub Trip Lever**  
Chrome



- Includes two screws

Item #
ABRAB5130

**Lift & Turn Drain**  
Chrome



Item #	O.D. (in)	Thread
ABRAB5211	1.50	Coarse

**Lift & Turn Drain**  
Chrome



Item #	O.D. (in)	Thread
ABRAB5213	1.63	Fine

To Order Call: 1.800.767.5552 . Fax: 1.800.886.9831

\*Original Mfg's names are used for identification only and are not a representation that the items offered are genuine items of the original Mfg.

# Quality Replacement Parts

## Tip Toe Cartridge Plastic

- Chrome top



Item #	O.D. (in)	Thread
ABRAB5221-CTG	0.94	18 TPI
ABRAB5222-CTG	0.38	18 TPI

## Shower Head Chrome

- With brass ball



Item #	GPM
ABRSC6400	2.5

## NIAGARA\* Shower Head Acrylic

- With brass ball
- Adjustable



Item #	GPM
ABRSC6401	2.5

## Shower Head Chrome



Item #	Face (dia.)
ABRSC6421	1.50

## Shower Head Chrome

- With brass ball



Item #	Face (dia.)
ABRSC6425	1.75

## Shower Arm Chrome



Item #	Length (in)
ABRSHOWER-ARM	6.00
ABRSHOWER-ARM-8	8.00

## Swivel Connector Chrome



Item #	
ABR3003	

## Slip Joint Nut Chrome Plated Zinc



Item #	Dia. (in)
ABRAB6011Z-1	1 ¼ x 1 ¼
ABRAB6011Z-2	1 ½ x 1 ¼
ABRAB6011Z-3	1 ½ x 1 ½

## Test Plug



Item #	Size (in)
ABRAB038-2	2
ABRAB038-3	3
ABRAB038-4	4

## Toilet & Urinal Parts

## Flush Handle Brass Arm

- Zinc nut



Item #	Length (in)
ABRAB0502	8

## Flush Handle Brass Arm

- Metal Lock Washer
- Premium tank lever
- New enlarged brass nut
- New fiber impregnated rubber washer



Item #	
ABRCPI0503NS	

## Flush Handle Brass Arm

- Offset flat arm



Item #	Length (in)
ABRAB0511	10

## KOHLER\* Flush Handle Brass Arm



Item #	Length (in)
ABRAB0517	8

## ELJER\* Flush Handle Brass Arm



Item #	Length (in)
ABRAB0534	9 ¼

## KOHLER\* Flush Handle Plastic Arm



Item #	Length (in)
ABRAB0541	8 ½

To Order Call: 1.800.767.5552 . Fax: 1.800.886.9831

# Quality Replacement Parts



## Flush Handle Plastic

- Eljer style touch flush



Item #  
ABRAB6201

## Flapper Rubber Kohler Style



Item #  
ABRAB191006

## Flapper Rubber Korky Style

- Universal



Item #  
ABRAB2035

## Flapper Rubber

- With styrofoam
- Crane old style #57



Item #  
ABRAB2055

## COAST\* Toilet Flapper Vinyl Old Style

- Universal



Item #  
ABRAB32079-B

## COAST\* Toilet Flapper Vinyl New Style

- Universal



Item #  
ABRAB32080-B

## Seat Bolts Plastic



Item #	Size (mm)
ABRAB57130	11
ABRAB57160	9

## Flapper Box



Item #  
ABRFLAPBOX

## Urinal Spud



Item #	Size (in)
ABRCS100X075	1 x 3/4

## Closet Spud



Item #	Size (in)
ABRCS125	1 1/4

## Closet Spud



Item #	Size (in)
ABRCS150	1 1/2

## Closet Spud



Item #	Size (in)
ABRCS200	2

## Closet Spud



Item #	Size (in)
ABRCS200X125	2 x 1 1/4

## Closet Spud



Item #	Size (in)
ABRCS200X150	2 x 1 1/2

Send Your ABRASS Orders To:

BARRY E.  SR. CO.

Fax or E-mail:  
orderdesk@barrywalter.com

To Order Call: 1.800.767.5552 . Fax: 1.800.886.9831

\*Original Mfg's names are used for identification only and are not a representation that the items offered are genuine items of the original Mfg.



## Replacement Parts

### Bibb Washers Flat



Item #	Size (in)
ABRAB9605	1/4S-00
ABRAB9615	1/4M-0
ABRAB9635	1/4R
ABRAB9655	1/4L
ABRAB9675	3/8R
ABRAB9695	3/8M
ABRAB9705	3/8L
ABRAB9725	1/2M

### Bibb Washers Beveled



Item #	Size (in)
ABRAB9805	1/4S-00
ABRAB9815	1/4M-0
ABRAB9835	1/4R
ABRAB9855	1/4L
ABRAB9875	3/8R
ABRAB9895	3/8M
ABRAB9905	3/8L
ABRAB9925	1/2R

### Sponge Overflow Washer Beveled



Item #	Size (in)
ABRAB1308L	3.25 x 2.25 x 0.19

### Stopper Rubber

- Universal
- For sinks & tubs



Item #	Size (in)
ABRAB133	.038 - 1.00
ABRAB135	1.50 - 2.00

### Stopper Flat



Item #	Size (in)
ABRAB134	5.00

### Stopper Disposal



Item #	Size (in)
ABRAB5110	4.00

### Disposal Drain Seal Rubber Hush Cushion



Item #
ABRAB303

### AMERICAN STANDARD\* Flush Valve Seal Rubber



Item #
ABRAB40413

### AMERICAN STANDARD\* Tank to Bowl Gasket Sponge

- Close couple



Item #
ABRAB40491

### AMERICAN STANDARD\* Disk Snap On



Item #
ABRAB453A

### AMERICAN STANDARD\* Disk Screw On



Item #
ABRAB7523

### Poly Washers Slip Joint & Tail Piece



Item #	Size (in)	Type	Color
ABRSPM-100	1.50	Slip Joint	Black
ABRSPM-200	1.25	Slip Joint	White
ABRTP-8120-C	1.50	Tail Piece	Clear

## Tools

### Broach Gauge Plastic

- Identifies make of stem
- 34 broach sizes



Item #	L x W (in)
113740	5.75 x 4.38

Send Your ABRASS Orders To:

BARRY E. WALTER SR. CO.

Fax or E-mail:  
orderdesk@barrywalter.com

To Order Call: 1.800.767.5552 . Fax: 1.800.886.9831

# Quality Replacement Parts



## Binford Faucets



### Lavatory Faucet

Washerless,  
Two Handle  
• Chrome plated  
brass



Item #	Pop-Up
ABF1010-LF	W/ ABS
ABF1010LP-LF	Less



### Lavatory Faucet

Washerless,  
ADA Two  
Handle  
• Chrome plated  
brass



Item #	Pop-Up
ABF2510DHLF-LF	Less



Item #	Pop-Up
ABF5510	W/ ABS



### Lavatory Faucet

Washerless,  
Single  
Handle



Item #	Pop-Up	Finish
ABF5510LSB-LF	W/ Brass	Chrome
ABF5510SLP-LF	Less	Chrome
ABF5510LSBSN-LF	W/ Brass	Nickel



### Kitchen Faucet

Washerless,  
Two Handle  
• Chrome plated  
brass



Item #	Spray
ABF1210-LF	Less
ABF1220-LF	With



### Spray Diverter Plastic

- Fits Jameco
- Fits Binford 1220 faucet



Item #
ABR1220DIV-LF



### Kitchen Faucet

Washerless,  
Single Lever  
• Chrome plated  
brass



Item #	Spray
ABF5710LS-LF	Less
ABF5720LS-LF	With



### Spray Diverter Plastic

- Fits Binford 5720 faucet



Item #
ABR5720DIV-LF

### Tub & Shower Faucet

Washerless,  
Single Lever  
• Chrome plated brass



Item #
ABF5310LS

### Tub & Shower Faucet

Pressure Balancing,  
Single Lever  
• Chrome plated brass  
• Anti-Scald  
• Integral stops



Item #
ABF5371L

### Tub & Shower Faucet

Washerless,  
Two Handle  
• Chrome plated brass



Item #
ABF1410

### Sleeve Chrome

- Fits ABF1410 faucet



Item #	Length (in)	O.D. (in)	Thread
ABRSLEEVE-1410	2 23/32	1	1"-24



### Service Sink Faucet

Two Handle  
Wall Mount  
• Satin chrome plated  
brass  
• 6-1/2" spout w/ vacuum  
breakers



Item #
ABF3050-LF



### Service Sink Faucet

Two Handle  
Wall Mount  
• Satin chrome  
plated brass  
• 2-1/2" spout w/ vacuum  
breakers



Item #
ABF3055-LF



### Wall Mount Faucet

Two Handle  
• Chrome plated  
brass  
• Gooseneck spout  
• 4" centers



Item #
ABF3057-LF

To Order Call: 1.800.767.5552 . Fax: 1.800.886.9831

\*Original Mfg's names are used for identification only and are not a representation that the items offered are genuine items of the original Mfg.



## Wall Mount Faucet

Two Handle

- Chrome plated brass
- Adjustable centers



Item #	Spout Size (in)
ABF3059-LF	8
ABF3060-LF	12
ABF3061-LF	18



## Faucet Spout Chrome



Item #	Spout Size (in)
ABF3059-SPOUT-LF	8
ABF3060-SPOUT-LF	12
ABF3061-SPOUT-LF	18



## Heavy Deck Mount Faucet

Two Handle

- Chrome plated brass
- Gooseneck spout
- 4" centers



Item #  
ABF3104-LF



## Heavy Deck Mount Faucet

Two Handle

- Chrome plated brass
- 6" spout
- 4" centers



Item #  
ABF3105-LF



## Deck Mount Pantry Faucet

Two Handle

- Chrome plated brass
- 10" Gooseneck spout



Item #  
ABF3111-LF



## Pre-Rinse Unit

Deck Mount

- Chrome plated brass
- Adjustable 7-1/2" to 8-1/2" centers



Item #  
ABF3612-LF



## Pre-Rinse Unit

Wall Mount

- Chrome plated brass
- Adjustable 7-1/2" to 8-1/2" centers



Item #  
ABF3013-LF



## Single Basin Cock

Compression,  
Single Handle

- Chrome plated brass
- Each includes "H" & "C" buttons



Item #  
ABFSBC-LF

## PHOENIX\* Tub & Shower Faucet

Washerless,  
Two Handle



Item #  
ABF4812

## Faucet Drains & Pop-Ups

### Pop-Up Assembly

Brass



Item #	Finish
ABRBP-10	Chrome
ABRBP-10-PVD	PVD Coated

## Grid Drain Brass

- Chrome plated



Item #	L x W (in)
ABRGD-10	8 x 1 1/4

## ADA Grid Drain Brass

- Chrome plated



Item #	Length (in)
ABRGD-10H	8

## Pop-Up Assembly Plastic

- Chrome plated top



Item #  
ABRPP-01

## Pop-Up Plug Plastic For Price Pfister

- Chrome plated brass top



Item #  
ABRAB1165

## Pop-Up Stopper Plastic For Delta/Universal

- Chrome plated top



Item #  
ABRDL9200PCP

To Order Call: 1.800.767.5552 . Fax: 1.800.886.9831



# Quality Replacement Parts



## AMERICAN BRASS\* 2-Valve Rebuild Kit



Item #

ABRKIT-AM102

## AMERICAN BRASS\* 3-Valve Rebuild Kit



Item #

ABRKIT-AM103

## AMERICAN BRASS\* 2-Valve Rebuild Kit



Item #

ABRKIT-AM112

## AMERICAN BRASS\* 3-Valve Rebuild Kit



Item #

ABRKIT-AM113

## ARROWHEAD\* 3-Valve Rebuild Kit



Item #

ABRKIT-AR103

## ARROWHEAD\* 3-Valve Rebuild Kit



Item #

ABRKIT-AR113

To Order Call: 1.800.767.5552 . Fax: 1.800.886.9831

\*Original Mfg's names are used for identification only and are not a representation that the items offered are genuine items of the original Mfg.

# Quality Replacement Parts

## AMERICAN STANDARD\* 2-Valve Rebuild Kit



Item #

ABRKIT-AS102

## AMERICAN STANDARD\* 3-Valve Rebuild Kit



Item #

ABRKIT-AS103

## AMERICAN STANDARD\* 2-Valve Rebuild Kit



Item #

ABRKIT-AS112

## AMERICAN STANDARD\* 3-Valve Rebuild Kit



Item #

ABRKIT-AS113

## AMERICAN STANDARD\* 2-Valve Rebuild Kit



Item #

ABRKIT-AS122

## AMERICAN STANDARD\* 3-Valve Rebuild Kit



Item #

ABRKIT-AS123

To Order Call: 1.800.767.5552 . Fax: 1.800.886.9831

# Quality Replacement Parts



## AMERICAN STANDARD\* 2-Valve Rebuild Kit



Item #

ABRKIT-AS132

## AMERICAN STANDARD\* 3-Valve Rebuild Kit



Item #

ABRKIT-AS133

## AMERICAN STANDARD\* 2-Valve Rebuild Kit



Item #

ABRKIT-AS142

## AMERICAN STANDARD\* 3-Valve Rebuild Kit



Item #

ABRKIT-AS143

## AMERICAN STANDARD\* 3-Valve Rebuild Kit



Item #

ABRKIT-AS153

## AMERICAN STANDARD\* 2-Valve Rebuild Kit



Item #

ABRKIT-AS162

To Order Call: 1.800.767.5552 . Fax: 1.800.886.9831

\*Original Mfg's names are used for identification only and are not a representation that the items offered are genuine items of the original Mfg.



# Quality Replacement Parts

## AMERICAN STANDARD\* 3-Valve Rebuild Kit



Item #

ABRKIT-AS163

## AMERICAN STANDARD\* 2-Valve Rebuild Kit



Item #

ABRKIT-AS172

## AMERICAN STANDARD\* 3-Valve Rebuild Kit



Item #

ABRKIT-AS173

## AMERICAN STANDARD\* 2-Valve Rebuild Kit



Item #

ABRKIT-AS182

## AMERICAN STANDARD\* 3-Valve Rebuild Kit



Item #

ABRKIT-AS183

## AMERICAN STANDARD\* 2-Valve Rebuild Kit



• with Stainless Steel rings

Item #

ABRKIT-AS192

To Order Call: 1.800.767.5552 . Fax: 1.800.886.9831

# Quality Replacement Parts



## AMERICAN STANDARD\* 3-Valve Rebuild Kit



• with Stainless Steel rings

Item #

ABRKIT-AS193

## AMERICAN STANDARD\* 2-Valve Rebuild Kit



Item #

ABRKIT-AS222

## AMERICAN STANDARD\* 2-Valve Rebuild Kit



Item #

ABRKIT-AS232

## AMERICAN STANDARD\* 3-Valve Rebuild Kit



Item #

ABRKIT-AS233

## BRIGGS\* 2-Valve Rebuild Kit



Item #

ABRKIT-BR102

## BRIGGS\* 3-Valve Rebuild Kit



Item #

ABRKIT-BR103

To Order Call: 1.800.767.5552 . Fax: 1.800.886.9831

\*Original Mfg's names are used for identification only and are not a representation that the items offered are genuine items of the original Mfg.

# Quality Replacement Parts

## BRIGGS\* 3-Valve Rebuild Kit



Item #

ABRKIT-BR113

## BRIGGS\* 2-Valve Rebuild Kit



Item #

ABRKIT-BR122

## BRIGGS\* 3-Valve Rebuild Kit



Item #

ABRKIT-BR123

## CENTRAL BRASS\* 2-Valve Rebuild Kit



Item #

ABRKIT-CB102

## CENTRAL BRASS\* 3-Valve Rebuild Kit



Item #

ABRKIT-CB103

## CENTRAL BRASS\* 2-Valve Rebuild Kit



Item #

ABRKIT-CB112

To Order Call: 1.800.767.5552 . Fax: 1.800.886.9831



# Quality Replacement Parts



## CENTRAL BRASS\* 3-Valve Rebuild Kit



Item #

ABRKIT-CB113

## CENTRAL BRASS\* 2-Valve Rebuild Kit



Item #

ABRKIT-CB122

## CENTRAL BRASS\* 3-Valve Rebuild Kit



Item #

ABRKIT-CB123

## CENTRAL BRASS\* 2-Valve Rebuild Kit



Item #

ABRKIT-CB132

## CENTRAL BRASS\* 3-Valve Rebuild Kit



Item #

ABRKIT-CB133

## CENTRAL BRASS\* 2-Valve Rebuild Kit



Item #

ABRKIT-CB142

To Order Call: 1.800.767.5552 . Fax: 1.800.886.9831

\*Original Mfg's names are used for identification only and are not a representation that the items offered are genuine items of the original Mfg.

# Quality Replacement Parts

**CRANE\***  
*2-Valve Rebuild Kit*



Item #

ABRKIT-CR102

**CRANE\***  
*3-Valve Rebuild Kit*



Item #

ABRKIT-CR103

**CRANE\***  
*2-Valve Rebuild Kit*



Item #

ABRKIT-CR112

**CRANE\***  
*3-Valve Rebuild Kit*



Item #

ABRKIT-CR113

**CRANE\***  
*2-Valve Rebuild Kit*



Item #

ABRKIT-CR122

**CRANE\***  
*2-Valve Rebuild Kit*



Item #

ABRKIT-CR132

To Order Call: 1.800.767.5552 . Fax: 1.800.886.9831

# Quality Replacement Parts



**CRANE\***  
**3-Valve Rebuild Kit**



Item #

ABRKIT-CR133

**CRANE\***  
**2-Valve Rebuild Kit**



Item #

ABRKIT-CR142

**CRANE\***  
**2-Valve Rebuild Kit**



Item #

ABRKIT-CR152

**CRANE\***  
**3-Valve Rebuild Kit**



Item #

ABRKIT-CR153

**ELJER\***  
**2-Valve Rebuild Kit**



Item #

ABRKIT-EL102

**ELJER\***  
**3-Valve Rebuild Kit**



Item #

ABRKIT-EL103

To Order Call: 1.800.767.5552 . Fax: 1.800.886.9831

*\*Original Mfg's names are used for identification only and are not a representation that the items offered are genuine items of the original Mfg.*



# Quality Replacement Parts

**ELJER\***  
*2-Valve Rebuild Kit*



Item #

ABRKIT-EL112

**ELJER\***  
*3-Valve Rebuild Kit*



Item #

ABRKIT-EL113

**ELJER\***  
*3-Valve Rebuild Kit*



Item #

ABRKIT-EL123

**ELJER\***  
*2-Valve Rebuild Kit*



Item #

ABRKIT-EL132

**ELJER\***  
*3-Valve Rebuild Kit*



Item #

ABRKIT-EL133

**ELJER\***  
*3-Valve Rebuild Kit*



Item #

ABRKIT-EL143

To Order Call: 1.800.767.5552 . Fax: 1.800.886.9831

# Quality Replacement Parts



**ELJER\***  
**2-Valve Rebuild Kit**



Item #

ABRKIT-EL152

**ELJER\***  
**3-Valve Rebuild Kit**



Item #

ABRKIT-EL153

**GERBER\***  
**2-Valve Rebuild Kit**



Item #

ABRKIT-GE102

**GERBER\***  
**3-Valve Rebuild Kit**



Item #

ABRKIT-GE103

**GERBER\***  
**2-Valve Rebuild Kit**



Item #

ABRKIT-GE112

**GERBER\***  
**3-Valve Rebuild Kit**



Item #

ABRKIT-GE113

To Order Call: 1.800.767.5552 . Fax: 1.800.886.9831

\*Original Mfg's names are used for identification only and are not a representation that the items offered are genuine items of the original Mfg.



# Quality Replacement Parts

**GERBER\***  
*2-Valve Rebuild Kit*



• for Integral Stop

Item #

ABRKIT-GE122

**GERBER\***  
*3-Valve Rebuild Kit*



• for Integral Stop

Item #

ABRKIT-GE123

**GERBER\***  
*2-Valve Rebuild Kit*



Item #

ABRKIT-GE142

**GERBER\***  
*3-Valve Rebuild Kit*



Item #

ABRKIT-GE143

**GLAUBER\***  
*3-Valve Rebuild Kit*



Item #

ABRKIT-GL103

**HARCRAFT\***  
*3-Valve Rebuild Kit*



Item #

ABRKIT-HA103

To Order Call: 1.800.767.5552 . Fax: 1.800.886.9831



# Quality Replacement Parts



**HARCRAFT\***  
**2-Valve Rebuild Kit**



Item #

ABRKIT-HA152

**HARCRAFT\***  
**3-Valve Rebuild Kit**



Item #

ABRKIT-HA153

**HARCRAFT\***  
**2-Valve Rebuild Kit**



Item #

ABRKIT-HA162

**HARCRAFT\***  
**3-Valve Rebuild Kit**



Item #

ABRKIT-HA163

**INDIANA\***  
**2-Valve Rebuild Kit**



Item #

ABRKIT-IN102

**INDIANA\***  
**3-Valve Rebuild Kit**



Item #

ABRKIT-IN103

To Order Call: 1.800.767.5552 . Fax: 1.800.886.9831

\*Original Mfg's names are used for identification only and are not a representation that the items offered are genuine items of the original Mfg.

# Quality Replacement Parts

**INDIANA\***  
*3-Valve Rebuild Kit*



Item #

ABRKIT-IN113

**KOHLER\***  
*2-Valve Rebuild Kit*



Item #

ABRKIT-KO102

**KOHLER\***  
*3-Valve Rebuild Kit*



Item #

ABRKIT-KO103

**KOHLER\***  
*2-Valve Rebuild Kit*



Item #

ABRKIT-KO112

**KOHLER\***  
*3-Valve Rebuild Kit*



Item #

ABRKIT-KO113

**KOHLER\***  
*2-Valve Rebuild Kit*



Item #

ABRKIT-KO122

To Order Call: 1.800.767.5552 . Fax: 1.800.886.9831

# Quality Replacement Parts



**KOHLER\***  
**3-Valve Rebuild Kit**



Item #  
ABRKIT-KO123

**KOHLER\***  
**2-Valve Rebuild Kit**



Item #  
ABRKIT-KO132

**KOHLER\***  
**3-Valve Rebuild Kit**



Item #  
ABRKIT-KO133

**KOHLER\***  
**3-Valve Rebuild Kit**



Item #  
ABRKIT-KO143

**KOHLER\***  
**2-Valve Rebuild Kit**



Item #  
ABRKIT-KO152

**KOHLER\***  
**3-Valve Rebuild Kit**



Item #  
ABRKIT-KO153

To Order Call: 1.800.767.5552 . Fax: 1.800.886.9831

\*Original Mfg's names are used for identification only and are not a representation that the items offered are genuine items of the original Mfg.



# Quality Replacement Parts

**KOHLER\***  
*2-Valve Rebuild Kit*



Item #  
ABRKIT-KO162

**KOHLER\***  
*3-Valve Rebuild Kit*



Item #  
ABRKIT-KO163

**KOHLER\***  
*2-Valve Rebuild Kit*



Item #  
ABRKIT-KO172

**KOHLER\***  
*3-Valve Rebuild Kit*



Item #  
ABRKIT-KO183

**MIXET\***  
*Single Handle Rebuild Kit*



Item #  
ABRKIT-MX101

**NIBCO\***  
*Single Handle Rebuild Kit*



Item #  
ABRKIT-NI101

To Order Call: 1.800.767.5552 . Fax: 1.800.886.9831

# Quality Replacement Parts



**PRICE PFISTER\***  
**2-Valve Rebuild Kit**



Item #

ABRKIT-PP102

**PRICE PFISTER\***  
**3-Valve Rebuild Kit**



Item #

ABRKIT-PP103

**PRICE PFISTER\***  
**2-Valve Rebuild Kit**



Item #

ABRKIT-PP112

**PRICE PFISTER\***  
**3-Valve Rebuild Kit**



Item #

ABRKIT-PP113

**PRICE PFISTER\***  
**2-Valve Rebuild Kit**



Item #

ABRKIT-PP122

**PRICE PFISTER\***  
**3-Valve Rebuild Kit**



Item #

ABRKIT-PP123

To Order Call: 1.800.767.5552 . Fax: 1.800.886.9831

\*Original Mfg's names are used for identification only and are not a representation that the items offered are genuine items of the original Mfg.

# Quality Replacement Parts

**PRICE PFISTER\***  
*2-Valve Rebuild Kit*



Item #

ABRKIT-PP132

**PRICE PFISTER\***  
*3-Valve Rebuild Kit*



Item #

ABRKIT-PP133

**PRICE PFISTER\***  
*2-Valve Rebuild Kit*



• for Integral Stop

Item #

ABRKIT-PP142

**PRICE PFISTER\***  
*3-Valve Rebuild Kit*



• for Integral Stop

Item #

ABRKIT-PP143

**PRICE PFISTER\***  
*2-Valve Rebuild Kit*



Item #

ABRKIT-PP152

**PRICE PFISTER\***  
*3-Valve Rebuild Kit*



Item #

ABRKIT-PP153

To Order Call: 1.800.767.5552 . Fax: 1.800.886.9831



# Quality Replacement Parts



## PRICE PFISTER\* 2-Valve Rebuild Kit



Item #

ABRKIT-PP162

## PRICE PFISTER\* 3-Valve Rebuild Kit



Item #

ABRKIT-PP163

## PRICE PFISTER\* 2-Valve Rebuild Kit



Item #

ABRKIT-PP172

## PRICE PFISTER\* 3-Valve Rebuild Kit



Item #

ABRKIT-PP173

## PRICE PFISTER\* 2-Valve Rebuild Kit



Item #

ABRKIT-PP182

## PRICE PFISTER\* 3-Valve Rebuild Kit



Item #

ABRKIT-PP183

To Order Call: 1.800.767.5552 . Fax: 1.800.886.9831

\*Original Mfg's names are used for identification only and are not a representation that the items offered are genuine items of the original Mfg.

# Quality Replacement Parts

## PRICE PFISTER\*

### 3-Valve Rebuild Kit



Item #

ABRKIT-PP193

## ROYAL BRASS\*

### 2-Valve Rebuild Kit



Item #

ABRKIT-RY102

## SAYCO\*

### 2-Valve Rebuild Kit



Item #

ABRKIT-SA102

## SAYCO\*

### 3-Valve Rebuild Kit



Item #

ABRKIT-SA103

## SAYCO\*

### 3-Valve Rebuild Kit



Item #

ABRKIT-SA113

## SAYCO\*

### 2-Valve Rebuild Kit



Item #

ABRKIT-SA132

To Order Call: 1.800.767.5552 . Fax: 1.800.886.9831



# Quality Replacement Parts



**SAYCO\***  
**3-Valve Rebuild Kit**



Item #

ABRKIT-SA143

**STERLING\***  
**3-Valve Rebuild Kit**



Item #

ABRKIT-SL103

**STERLING\***  
**2-Valve Rebuild Kit**



Item #

ABRKIT-SL112

**STERLING\***  
**3-Valve Rebuild Kit**



Item #

ABRKIT-SL113

**STERLING\***  
**2-Valve Rebuild Kit**



Item #

ABRKIT-SL122

**STERLING\***  
**3-Valve Rebuild Kit**



Item #

ABRKIT-SL123

To Order Call: 1.800.767.5552 . Fax: 1.800.886.9831

\*Original Mfg's names are used for identification only and are not a representation that the items offered are genuine items of the original Mfg.



# Quality Replacement Parts

**STERLING\***  
*2-Valve Rebuild Kit*



Item #

ABRKIT-SL132

**STERLING\***  
*3-Valve Rebuild Kit*



Item #

ABRKIT-SL133

**STERLING\***  
*2-Valve Rebuild Kit*



Item #

ABRKIT-SL142

**STERLING\***  
*3-Valve Rebuild Kit*



Item #

ABRKIT-SL143

**STERLING\***  
*3-Valve Rebuild Kit*



Item #

ABRKIT-SL153

**STERLING\***  
*3-Valve Rebuild Kit*



Item #

ABRKIT-SL163

To Order Call: 1.800.767.5552 . Fax: 1.800.886.9831

# Quality Replacement Parts



**STERLING\***  
**2-Valve Rebuild Kit**



Item #

ABRKIT-SL182

**SPEAKMAN\***  
**2-Valve Rebuild Kit**



Item #

ABRKIT-SP102

**SPEAKMAN\***  
**3-Valve Rebuild Kit**



Item #

ABRKIT-SP103

**SPEAKMAN\***  
**2-Valve Rebuild Kit**



Item #

ABRKIT-SP112

**SPEAKMAN\***  
**2-Valve Rebuild Kit**



Item #

ABRKIT-SP122

**SPEAKMAN\***  
**3-Valve Rebuild Kit**



Item #

ABRKIT-SP133

To Order Call: 1.800.767.5552 . Fax: 1.800.886.9831

\*Original Mfg's names are used for identification only and are not a representation that the items offered are genuine items of the original Mfg.

# Quality Replacement Parts

**SAVOY\***  
**2-Valve Rebuild Kit**



Item #  
ABRKIT-SV102

**SAVOY\***  
**3-Valve Rebuild Kit**



Item #  
ABRKIT-SV103

**SAVOY\***  
**2-Valve Rebuild Kit**



Item #  
ABRKIT-SV112

**SAVOY\***  
**2-Valve Rebuild Kit**



Item #  
ABRKIT-SV122

**SAVOY\***  
**3-Valve Rebuild Kit**



Item #  
ABRKIT-SV123

**SAVOY\***  
**2-Valve Rebuild Kit**



Item #  
ABRKIT-SV132

To Order Call: 1.800.767.5552 . Fax: 1.800.886.9831



# Quality Replacement Parts



## SAVOY\* 3-Valve Rebuild Kit



Item #

ABRKIT-SV133

## SAVOY\* 2-Valve Rebuild Kit



Item #

ABRKIT-SV142

## SAVOY\* 3-Valve Rebuild Kit



Item #

ABRKIT-SV143

## SAVOY\* 3-Valve Rebuild Kit



Item #

ABRKIT-SV153

## UNION BRASS\* 3-Valve Rebuild Kit



Item #

ABRKIT-UN103

## UNION BRASS\* 3-Valve Rebuild Kit



Item #

ABRKIT-UN113

To Order Call: 1.800.767.5552 . Fax: 1.800.886.9831

\*Original Mfg's names are used for identification only and are not a representation that the items offered are genuine items of the original Mfg.

# Quality Replacement Parts

## UNION BRASS\* 2-Valve Rebuild Kit



Item #

ABRKIT-UN122

## UNION BRASS\* 3-Valve Rebuild Kit



Item #

ABRKIT-UN123

## UNION BRASS\* 3-Valve Rebuild Kit



Item #

ABRKIT-UN133

## UNION BRASS\* 3-Valve Rebuild Kit



Item #

ABRKIT-UN143

## UNION BRASS\* 3-Valve Rebuild Kit



Item #

ABRKIT-UN163

To Order Call: 1.800.767.5552 . Fax: 1.800.886.9831

# Index by Part Number



ABF1010-LF .....	43	ABFSBC-LF .....	44	ABRAB0502 .....	40
ABF1010LP-LF .....	43	ABR1220DIV-LF .....	43	ABRAB0511 .....	40
ABF1210-LF .....	43	ABR12C12CS .....	38	ABRAB0517 .....	40
ABF1220-LF .....	43	ABR12F12CA-LF .....	38	ABRAB0534 .....	40
ABF1410.....	43	ABR12F12CS .....	38	ABRAB0541 .....	40
ABF2510DHLP-LF .....	43	ABR12F38CA-LF .....	38	ABRAB1165 .....	44
ABF3013-LF .....	44	ABR12F38CS .....	38	ABRAB1200 .....	38
ABF3050-LF .....	43	ABR1300DIV .....	37	ABRAB1201 .....	38
ABF3055-LF .....	43	ABR1300DIVBOOT .....	37	ABRAB1211 .....	39
ABF3057-LF .....	43	ABR3003.....	40	ABRAB1213 .....	39
ABF3059-LF .....	44	ABR3057-HDL-PR .....	6	ABRAB1221 .....	39
ABF3059-SPOUT-LF .....	44	ABR3057-STEM-PR-LF .....	6	ABRAB1224 .....	39
ABF3060-LF .....	44	ABR3612-HOSE-LF .....	30	ABRAB1225 .....	39
ABF3060-SPOUT-LF .....	44	ABR3612-SPRAY-LF .....	30	ABRAB1230 .....	39
ABF3061-LF .....	44	ABR3612-SPRING.....	30	ABRAB1231 .....	39
ABF3061-SPOUT-LF .....	44	ABR38C38CS-LF.....	38	ABRAB1240 .....	39
ABF3104-LF .....	44	ABR38F38CA-LF .....	38	ABRAB1243 .....	39
ABF3105-LF .....	44	ABR38F38CS .....	38	ABRAB1245 .....	39
ABF3111-LF .....	44	ABR5371L-HDL .....	36	ABRAB1250 .....	39
ABF3612-LF .....	44	ABR5510LS-HDL.....	36	ABRAB1308L .....	42
ABF4812.....	44	ABR5720DIV-LF .....	43	ABRAB133 .....	42
ABF5310LS .....	43	ABR58C12CA .....	38	ABRAB134 .....	42
ABF5371L.....	43	ABR58C38CA .....	38	ABRAB135 .....	42
ABF5510.....	43	ABR58C38CA-LF.....	38	ABRAB191006 .....	41
ABF5510LSB-LF.....	43	ABR58C38CS .....	38	ABRAB2035 .....	41
ABF5510LSBSN-LF.....	43	ABR58C38CS-LF.....	38	ABRAB2055 .....	41
ABF5510LSLP-LF.....	43	ABRAB038-2.....	40	ABRAB303 .....	42
ABF5710LS-LF .....	43	ABRAB038-3.....	40	ABRAB32079-B .....	41
ABF5720LS-LF .....	43	ABRAB038-4.....	40	ABRAB32080-B .....	41



# Index by Part Number

ABRAB40413..... 42	ABRAB9875..... 42	ABRAS32131 .....2
ABRAB40491..... 42	ABRAB9895..... 42	ABRAS32140 .....2
ABRAB453A ..... 42	ABRAB9905..... 42	ABRAS32140D .....2
ABRAB5110..... 42	ABRAB9925..... 42	ABRAS32141 .....2
ABRAB5120..... 39	ABRAM20176-LF ..... 1	ABRAS32170 .....2
ABRAB5130..... 39	ABRAM20177 ..... 1	ABRAS32170D .....2
ABRAB5211..... 39	ABRAM33051 ..... 1	ABRAS32171 .....2
ABRAB5213..... 39	ABRAM33051D..... 1	ABRAS32172 .....2
ABRAB5221-CTG..... 40	ABRAS10101-LF ..... 1	ABRAS32172D .....3
ABRAB5222-CTG..... 40	ABRAS10102-LF ..... 1	ABRAS32173 .....3
ABRAB57130..... 41	ABRAS10103-LF ..... 1	ABRAS32175 .....3
ABRAB57160..... 41	ABRAS10104-LF ..... 1	ABRAS32176 .....3
ABRAB6011Z-1 ..... 40	ABRAS10105..... 1	ABRAS32178 .....3
ABRAB6011Z-2 ..... 40	ABRAS10108-LF ..... 1	ABRAS32178D .....3
ABRAB6011Z-3 ..... 40	ABRAS10109-LF ..... 1	ABRAS32181 .....3
ABRAB6201..... 41	ABRAS20101..... 1	ABRAS32182 .....3
ABRAB7523..... 42	ABRAS20170-18T ..... 1	ABRAS32183 .....3
ABRAB9605..... 42	ABRAS20172..... 1	ABRAS32183D .....3
ABRAB9615..... 42	ABRAS20173..... 1	ABRAS32186 .....3
ABRAB9635..... 42	ABRAS20174..... 1	ABRAS32188 .....3
ABRAB9655..... 42	ABRAS20186-15..... 1	ABRAS32188D .....3
ABRAB9675..... 42	ABRAS32100..... 1	ABRAS50329 .....3
ABRAB9695..... 42	ABRAS32101 .....2	ABRAS50344 .....3
ABRAB9705..... 42	ABRAS32101D .....2	ABRAS50346 .....4
ABRAB9725..... 42	ABRAS32110..... 2	ABRAS50347 .....4
ABRAB9805..... 42	ABRAS32120..... 2	ABRAS50348 .....4
ABRAB9815..... 42	ABRAS32121 .....2	ABRAS50353-L.....4
ABRAB9835..... 42	ABRAS32130..... 2	ABRAS50353-S .....4
ABRAB9855..... 42	ABRAS32130D .....2	ABRAS50354 .....4

# Index by Part Number



ABRAS77103C .....	4	ABRBV58C38CS .....	38	ABRCC19003.....	33
ABRAS77103D .....	4	ABRBV58C38CS-LF .....	38	ABRCC19006.....	33
ABRAS77103H .....	4	ABRCB10368-LF .....	6	ABRCC19008.....	33
ABRAS77104C .....	4	ABRCB10369-LF .....	5	ABRCC19010.....	33
ABRAS77104H .....	4	ABRCB10370-LF .....	5	ABRCC19011.....	33
ABRAS77179C .....	4	ABRCB10371-LF .....	5	ABRCC19012.....	33
ABRAS77179D .....	4	ABRCB20329.....	5	ABRCC19014.....	33
ABRAS77179H .....	4	ABRCB20331.....	5	ABRCC19015.....	33
ABRAS9001.....	4	ABRCB20332.....	5	ABRCC19016.....	34
ABRAS9002.....	4	ABRCB20333.....	5	ABRCC19017.....	34
ABRBP-10 .....	44	ABRCB20336.....	5	ABRCC19019-LF .....	33
ABRBP-10-PVD .....	44	ABRCB20337.....	5	ABRCC19020-LF .....	33
ABRBR10213 .....	4	ABRCB32231.....	5	ABRCC19023.....	34
ABRBR10213-GASKET .....	4	ABRCB32231D .....	5	ABRCC19023SP .....	34
ABRBR20251 .....	4	ABRCB32232.....	5	ABRCC19024.....	34
ABRBR20252 .....	4	ABRCB32233.....	6	ABRCC19025.....	34
ABRBR33246 .....	4	ABRCB32240.....	6	ABRCC19026.....	34
ABRBR33651 .....	5	ABRCB32240D .....	6	ABRCC19027.....	34
ABRBR33651D .....	5	ABRCB32241 .....	6	ABRCC19028.....	34
ABRBR404-07 .....	5	ABRCB32241C .....	6	ABRCC19029.....	34
ABRBV12F12CA .....	38	ABRCB32241H .....	6	ABRCC19030.....	34
ABRBV12F12CS .....	38	ABRCB33247.....	6	ABRCC19031.....	34
ABRBV12F38CA-LF .....	38	ABRCB50421.....	6	ABRCC19032.....	34
ABRBV12F38CS .....	38	ABRCBF360-3-LF .....	37	ABRCC19033.....	34
ABRBV12F38CS-LF .....	37	ABRCBF360-3-P.....	37	ABRCC19034.....	35
ABRBV58C12CA .....	38	ABRCBF360-KIT-LF .....	37	ABRCC19035.....	35
ABRBV58C12CS .....	38	ABRCBF360-LF .....	37	ABRCC19036.....	35
ABRBV58C12CS-LF .....	38	ABRCC19001 .....	33	ABRCC19037.....	35
ABRBV58C38CA-LF .....	38	ABRCC19002 .....	33	ABRCC19038.....	35

# Index by Part Number

ABRCC19039 .....	35	ABRCR32337 .....	7	ABRDE33961 .....	8
ABRCC19040 .....	35	ABRCR32338 .....	7	ABRDE404-01WA.....	8
ABRCC19041 .....	35	ABRCR32339 .....	7	ABRDE404-02.....	8
ABRCC19042 .....	35	ABRCR32340 .....	7	ABRDE404-03.....	8
ABRCC19043 .....	35	ABRCR77121C.....	7	ABRDE408-04.....	8
ABRCC19044 .....	35	ABRCR77121D.....	7	ABRDE408-16.....	8
ABRCC19045 .....	35	ABRCR77121H.....	7	ABRDE50317.....	8
ABRCC19046 .....	35	ABRCS100X075 .....	41	ABRDE5200EX .....	8
ABRCC19047 .....	35	ABRCS125.....	41	ABRDE7404-01.....	8
ABRCC19048 .....	35	ABRCS150.....	41	ABRDE-KIT-1 .....	9
ABRCC19049 .....	36	ABRCS200.....	41	ABRDE-KIT-2.....	9
ABRCC-MIX.....	36	ABRCS200X125 .....	41	ABRDL9200PCP .....	44
ABRCH10320 .....	6	ABRCS200X150 .....	41	ABRDLX-INDEX-C.....	8
ABRCH10320-LF .....	6	ABRCTG-LEV-COLD .....	37	ABRDLX-INDEX-H.....	8
ABRCH10321 .....	6	ABRCTG-LEV-HOT .....	37	ABREL20524 .....	9
ABRCH10321-LF .....	6	ABRDE10420.....	7	ABREL20525 .....	9
ABRCH32001 .....	6	ABRDE10421.....	7	ABREL20526 .....	9
ABRCH32002 .....	6	ABRDE10422.....	7	ABREL20527 .....	9
ABRCH77180C.....	6	ABRDE10423.....	7	ABREL20528 .....	9
ABRCH77180H.....	6	ABRDE10424.....	7	ABREL20529 .....	9
ABRCPAERATOR-LF.....	37	ABRDE10426.....	7	ABREL20533 .....	9
ABRCPI0503NS .....	40	ABRDE1-212B .....	9	ABREL33151 .....	9
ABRCR10312-LF .....	6	ABRDE1-212B-LF.....	9	ABREL33152 .....	9
ABRCR10313-LF .....	6	ABRDE1-212SS.....	9	ABREL33152D.....	9
ABRCR20334 .....	6	ABRDE1-70B .....	8	ABREL33613 .....	9
ABRCR20341 .....	7	ABRDE1-70B-LF .....	8	ABREL33614 .....	10
ABRCR32330 .....	7	ABRDE1-70B-SP .....	8	ABREL33815 .....	10
ABRCR32330D.....	7	ABRDE1-70SS.....	8	ABREL33820 .....	10
ABRCR32335 .....	7	ABRDE1-70SS-OEM .....	8	ABREL33820D.....	10



# Index by Part Number



ABRFA32235.....	10	ABRFA50325.....	12	ABRFA77161C.....	14
ABRFA32245.....	10	ABRFA50326.....	12	ABRFA77161C-PB.....	14
ABRFA32255.....	10	ABRFA50327.....	12	ABRFA77161D.....	14
ABRFA32266.....	10	ABRFA50330.....	12	ABRFA77161D-PB.....	14
ABRFA32267CP.....	10	ABRFA50331.....	12	ABRFA77161H.....	14
ABRFA32267PB.....	10	ABRFA50332.....	13	ABRFA77161H-PB.....	14
ABRFA32270.....	11	ABRFA50341-24T.....	13	ABRFA91620-L.....	14
ABRFA32271.....	11	ABRFA50350.....	13	ABRFA91620-S.....	14
ABRFA32410.....	11	ABRFA50351.....	13	ABRFEB091011.....	10
ABRFA32411.....	11	ABRFA50352.....	13	ABRFEB182512.....	10
ABRFA32412.....	11	ABRFA50361.....	13	ABRFEB19A.....	10
ABRFA32451.....	11	ABRFA50361-18T.....	13	ABRFEB19B.....	10
ABRFA32452.....	11	ABRFA50362.....	13	ABRFI32601.....	14
ABRFA32453.....	11	ABRFA50363.....	13	ABRFI32601C.....	14
ABRFA32480.....	11	ABRFA50372.....	13	ABRFI32601H.....	14
ABRFA32801.....	11	ABRFA50380.....	13	ABRGD-10.....	44
ABRFA32802.....	11	ABRFA5824S.....	14	ABRGD-10H.....	44
ABRFA33720.....	11	ABRFA77101C.....	13	ABRGE10724-LF.....	14
ABRFA33740.....	11	ABRFA77101D.....	13	ABRGE10725-LF.....	14
ABRFA33780.....	11	ABRFA77101H.....	13	ABRGE10726-LF.....	14
ABRFA408-10.....	12	ABRFA77102C.....	13	ABRGE10727-LF.....	14
ABRFA408-10L.....	12	ABRFA77102D.....	13	ABRGE20778B.....	14
ABRFA408-10S.....	12	ABRFA77102H.....	13	ABRGE20779.....	14
ABRFA50318.....	12	ABRFA77112C.....	13	ABRGE32500.....	14
ABRFA50320.....	12	ABRFA77112D.....	13	ABRGE32500D.....	14
ABRFA50321.....	12	ABRFA77112H.....	13	ABRGE32501.....	14
ABRFA50322.....	12	ABRFA77116C.....	13	ABRGE32501D.....	14
ABRFA50323.....	12	ABRFA77116D.....	13	ABRGE32510.....	14
ABRFA50324.....	12	ABRFA77116H.....	13	ABRGE32511.....	15

# Index by Part Number

ABRGE32520 ..... 15	ABRIN33615D ..... 16	ABRKIT-AS233 ..... 49
ABRGE32521D ..... 15	ABRIN50384 ..... 16	ABRKIT-BR102 ..... 49
ABRGE32540 ..... 15	ABRKIT-AM102 ..... 45	ABRKIT-BR103 ..... 49
ABRGE32541 ..... 15	ABRKIT-AM103 ..... 45	ABRKIT-BR113 ..... 50
ABRGE32541D ..... 15	ABRKIT-AM112 ..... 45	ABRKIT-BR122 ..... 50
ABRGE50377 ..... 15	ABRKIT-AM113 ..... 45	ABRKIT-BR123 ..... 50
ABRGE50403 ..... 15	ABRKIT-AR103 ..... 45	ABRKIT-CB102 ..... 50
ABRGE50437 ..... 15	ABRKIT-AR113 ..... 45	ABRKIT-CB103 ..... 50
ABRGE77122C ..... 15	ABRKIT-AS102 ..... 46	ABRKIT-CB112 ..... 50
ABRGE77122D ..... 15	ABRKIT-AS103 ..... 46	ABRKIT-CB113 ..... 51
ABRGE77122H ..... 15	ABRKIT-AS112 ..... 46	ABRKIT-CB122 ..... 51
ABRHA20831 ..... 15	ABRKIT-AS113 ..... 46	ABRKIT-CB123 ..... 51
ABRHA20834 ..... 15	ABRKIT-AS122 ..... 46	ABRKIT-CB132 ..... 51
ABRHA32646 ..... 15	ABRKIT-AS123 ..... 46	ABRKIT-CB133 ..... 51
ABRHA32646D ..... 15	ABRKIT-AS132 ..... 47	ABRKIT-CB142 ..... 51
ABRHA32647 ..... 15	ABRKIT-AS133 ..... 47	ABRKIT-CR102 ..... 52
ABRHA50340 ..... 16	ABRKIT-AS142 ..... 47	ABRKIT-CR103 ..... 52
ABRHA77176C ..... 16	ABRKIT-AS143 ..... 47	ABRKIT-CR112 ..... 52
ABRHA77176H ..... 16	ABRKIT-AS153 ..... 47	ABRKIT-CR113 ..... 52
ABRHA77177C ..... 16	ABRKIT-AS162 ..... 47	ABRKIT-CR122 ..... 52
ABRHA77177D ..... 16	ABRKIT-AS163 ..... 48	ABRKIT-CR132 ..... 52
ABRHA77177H ..... 16	ABRKIT-AS172 ..... 48	ABRKIT-CR133 ..... 53
ABRIM13801-LF ..... 33	ABRKIT-AS173 ..... 48	ABRKIT-CR142 ..... 53
ABRIM13802-LF ..... 33	ABRKIT-AS182 ..... 48	ABRKIT-CR152 ..... 53
ABRIN20911 ..... 16	ABRKIT-AS183 ..... 48	ABRKIT-CR153 ..... 53
ABRIN20912 ..... 16	ABRKIT-AS192 ..... 48	ABRKIT-EL102 ..... 53
ABRIN33610 ..... 16	ABRKIT-AS193 ..... 49	ABRKIT-EL103 ..... 53
ABRIN33611 ..... 16	ABRKIT-AS222 ..... 49	ABRKIT-EL112 ..... 54
ABRIN33615 ..... 16	ABRKIT-AS232 ..... 49	ABRKIT-EL113 ..... 54

# Index by Part Number



ABRKIT-EL123 .....	54	ABRKIT-KO143.....	59	ABRKIT-SA102 .....	64
ABRKIT-EL132 .....	54	ABRKIT-KO152.....	59	ABRKIT-SA103 .....	64
ABRKIT-EL133 .....	54	ABRKIT-KO153.....	59	ABRKIT-SA113 .....	64
ABRKIT-EL143 .....	54	ABRKIT-KO162.....	59	ABRKIT-SA132 .....	64
ABRKIT-EL152 .....	55	ABRKIT-KO163.....	59	ABRKIT-SA143 .....	64
ABRKIT-EL153 .....	55	ABRKIT-KO172.....	60	ABRKIT-SL103.....	64
ABRKIT-GE102 .....	55	ABRKIT-KO183.....	60	ABRKIT-SL112.....	65
ABRKIT-GE103 .....	55	ABRKIT-MX101 .....	60	ABRKIT-SL113.....	65
ABRKIT-GE112 .....	55	ABRKIT-NI101 .....	60	ABRKIT-SL122.....	65
ABRKIT-GE113 .....	55	ABRKIT-PP102 .....	60	ABRKIT-SL123.....	65
ABRKIT-GE122 .....	56	ABRKIT-PP103 .....	60	ABRKIT-SL132.....	65
ABRKIT-GE123 .....	56	ABRKIT-PP112 .....	61	ABRKIT-SL133.....	65
ABRKIT-GL103.....	56	ABRKIT-PP113 .....	61	ABRKIT-SL142.....	66
ABRKIT-HA103.....	56	ABRKIT-PP122 .....	61	ABRKIT-SL143.....	66
ABRKIT-HA152.....	56	ABRKIT-PP123 .....	61	ABRKIT-SL153.....	66
ABRKIT-HA153.....	56	ABRKIT-PP132 .....	61	ABRKIT-SL163.....	66
ABRKIT-HA162.....	57	ABRKIT-PP133 .....	61	ABRKIT-SL182.....	66
ABRKIT-HA163.....	57	ABRKIT-PP142 .....	62	ABRKIT-SP102 .....	66
ABRKIT-IN102 .....	57	ABRKIT-PP143 .....	62	ABRKIT-SP103 .....	67
ABRKIT-IN103 .....	57	ABRKIT-PP152 .....	62	ABRKIT-SP112 .....	67
ABRKIT-IN113 .....	57	ABRKIT-PP153 .....	62	ABRKIT-SP122 .....	67
ABRKIT-KO102 .....	57	ABRKIT-PP162 .....	62	ABRKIT-SP133 .....	67
ABRKIT-KO103 .....	58	ABRKIT-PP163 .....	62	ABRKIT-SV102 .....	67
ABRKIT-KO112 .....	58	ABRKIT-PP172 .....	63	ABRKIT-SV103 .....	67
ABRKIT-KO113 .....	58	ABRKIT-PP173 .....	63	ABRKIT-SV112 .....	68
ABRKIT-KO122 .....	58	ABRKIT-PP182 .....	63	ABRKIT-SV122 .....	68
ABRKIT-KO123 .....	58	ABRKIT-PP183 .....	63	ABRKIT-SV123 .....	68
ABRKIT-KO132 .....	58	ABRKIT-PP193 .....	63	ABRKIT-SV132 .....	68
ABRKIT-KO133 .....	59	ABRKIT-RY102.....	63	ABRKIT-SV133 .....	68



# Index by Part Number

ABRKIT-SV142..... 68	ABRKO21112 ..... 17	ABRMO21306 ..... 19
ABRKIT-SV143..... 69	ABRKO21113 ..... 17	ABRMO32701 ..... 19
ABRKIT-SV153..... 69	ABRKO21114 ..... 17	ABRMO404-10L.....20
ABRKIT-UN103 ..... 69	ABRKO21115 ..... 17	ABRMO404-10S .....20
ABRKIT-UN113 ..... 69	ABRKO32630 ..... 17	ABRMO404-12L.....20
ABRKIT-UN122 ..... 69	ABRKO32631 ..... 17	ABRMO404-12S .....20
ABRKIT-UN123 ..... 69	ABRKO32632 ..... 17	ABRMO404-22L.....20
ABRKIT-UN133 ..... 70	ABRKO32632D..... 17	ABRMW11323 ..... 18
ABRKIT-UN143 ..... 70	ABRKO32635 ..... 17	ABRMW11324 ..... 18
ABRKIT-UN163 ..... 70	ABRKO32636 ..... 17	ABRMW11325 ..... 18
ABRKO11101-LF..... 16	ABRKO32640 ..... 18	ABRMW11326 ..... 18
ABRKO11102-LF..... 16	ABRKO32641 ..... 18	ABRMW11327 ..... 18
ABRKO11124-LF..... 16	ABRKO32641D..... 18	ABRMW21323 ..... 19
ABRKO11125 ..... 16	ABRKO408-13 ..... 18	ABRMX21348-B..... 19
ABRKO11125-LF..... 16	ABRKO50366S ..... 18	ABRMX34103 .....20, 36
ABRKO11126-LF..... 16	ABRKO50373 ..... 18	ABRMX404-16C..... 19
ABRKO11127-LF..... 16	ABRKO50381 ..... 18	ABRMX404-16S..... 19
ABRKO11128-LF..... 16	ABRKO50422 ..... 18	ABRMX404-17 ..... 19
ABRKO11134 ..... 16	ABRKO77131C..... 18	ABRMX404-18 ..... 19
ABRKO11134-LF..... 16	ABRKO77131D..... 18	ABRMX50337 ..... 19
ABRKO11135 ..... 16	ABRKO77131H..... 18	ABRNI11438 .....20
ABRKO11135-LF..... 16	ABRKO77132C..... 18	ABRNI11439 .....20
ABRKO11158 ..... 17	ABRKO77132H..... 18	ABRNI11440 .....20
ABRKO11159 ..... 17	ABRMO11300..... 19	ABRNI404-04 .....20
ABRKO21101 ..... 17	ABRMO11301..... 19	ABRNI408-14 .....20
ABRKO21102 ..... 17	ABRMO21304..... 19	ABRNI50336 .....20
ABRKO21103 ..... 17	ABRMO21304-LF ..... 19	ABRNI50338 .....20
ABRKO21104 ..... 17	ABRMO21305..... 19	ABRNI50339 .....20
ABRKO21111 ..... 17	ABRMO21305-LF ..... 19	ABRNI50343 .....20

# Index by Part Number



ABRPBAERATOR-LF ..... 37	ABRPP32800D ..... 22	ABRPP50414 ..... 24
ABRPBCV..... 36	ABRPP32803..... 22	ABRPP704-09-1..... 24
ABRPBCV-CTG..... 36	ABRPP32811 ..... 22	ABRPP77151C ..... 24
ABRPBCV-MIX ..... 36	ABRPP32840..... 22	ABRPP77151D ..... 24
ABRPBCV-RING ..... 36	ABRPP32840D ..... 22	ABRPP77151H ..... 24
ABRPH11670-LF ..... 20	ABRPP32841 ..... 22	ABRPP77152C ..... 24
ABRPH32760 ..... 20	ABRPP32850D ..... 22	ABRPP77152D ..... 24
ABRPH50328 ..... 21	ABRPP32860..... 22	ABRPP77152H ..... 24
ABRPH50333 ..... 21	ABRPP32870..... 22	ABRPP77155C ..... 24
ABRPH50334 ..... 21	ABRPP32870D ..... 22	ABRPP77155D ..... 24
ABRPP-01 ..... 44	ABRPP32880..... 22	ABRPP77155H ..... 24
ABRPP11635-LF ..... 21	ABRPP32881 ..... 22	ABRPP-SEAT ..... 24
ABRPP11636-LF ..... 21	ABRPP32882..... 23	ABRSA11938-LF..... 25
ABRPP11637-LF ..... 21	ABRPP32883..... 23	ABRSA11939-LF..... 25
ABRPP11640..... 21	ABRPP32883D ..... 23	ABRSA21951 ..... 25
ABRPP11641..... 21	ABRPP35132..... 23	ABRSA21952 ..... 25
ABRPP11665-LF ..... 21	ABRPP37156..... 23	ABRSA21953 ..... 25
ABRPP11666-LF ..... 21	ABRPP404-09..... 23	ABRSA21957 ..... 25
ABRPP11676-LF ..... 21	ABRPP404-23L..... 23	ABRSA33030 ..... 25
ABRPP11691..... 21	ABRPP408-17..... 23	ABRSA33030D ..... 25
ABRPP213218L..... 24	ABRPP408-17D ..... 23	ABRSA33031 ..... 25
ABRPP21651..... 21	ABRPP408-19..... 23	ABRSA33031D ..... 25
ABRPP21652..... 21	ABRPP408-20..... 23	ABRSA33033 ..... 26
ABRPP21653..... 21	ABRPP50342..... 23	ABRSA33038 ..... 36
ABRPP21654..... 21	ABRPP50401 ..... 23	ABRSA50371 ..... 26
ABRPP21655..... 21	ABRPP50402..... 23	ABRSA50372 ..... 26
ABRPP21656..... 22	ABRPP50411 ..... 24	ABRSA50391 ..... 26
ABRPP21670..... 22	ABRPP50412..... 24	ABRSA77162C ..... 26
ABRPP32800..... 22	ABRPP50413..... 24	ABRSA77162D ..... 26

# Index by Part Number

ABRSA77162H ..... 26	ABRSL408-11 ..... 28	ABRSV21962 ..... 24
ABRSC6400 ..... 40	ABRSL408-11D ..... 28	ABRSV21964 ..... 24
ABRSC6401 ..... 40	ABRSL408-12 ..... 28	ABRSV21968 ..... 24
ABRSC6421 ..... 40	ABRSL408-44 ..... 28	ABRSV21970 ..... 24
ABRSC6425 ..... 40	ABRSL408-44D ..... 28	ABRSV21972 ..... 25
ABRSCP5120 ..... 39	ABRSL50366L ..... 28	ABRSV32911 ..... 25
ABRSHOWER-ARM ..... 40	ABRSL50375 ..... 28	ABRSV32911D ..... 25
ABRSHOWER-ARM-8 ..... 40	ABRSL50376 ..... 28	ABRSV33248 ..... 25
ABRSL11965 ..... 26	ABRSL50388 ..... 28	ABRSV50368 ..... 25
ABRSL21981 ..... 26	ABRSL50423 ..... 28	ABRSV52912 ..... 25
ABRSL21982 ..... 26	ABRSL50424 ..... 28	ABRSW11911-LF ..... 28
ABRSL21983 ..... 26	ABRSL77171C ..... 28	ABRSW11912-LF ..... 28
ABRSL21986 ..... 26	ABRSL77171D ..... 28	ABRSW32900 ..... 29
ABRSL21987 ..... 26	ABRSL77171H ..... 28	ABRSW33330 ..... 29
ABRSL21994 ..... 27	ABRSL77172C ..... 28	ABRSY37210 ..... 29
ABRSL21995 ..... 27	ABRSL77172D ..... 28	ABRSY37220 ..... 29
ABRSL32886 ..... 27	ABRSL77172H ..... 28	ABRSY37221 ..... 29
ABRSL32890 ..... 27	ABRSL77173 ..... 28	ABRSY37230 ..... 29
ABRSL32890D ..... 27	ABRSLEEVE-1410 ..... 43	ABRSY37231 ..... 29
ABRSL33210 ..... 27	ABRSP29200C ..... 26	ABRSY37232 ..... 29
ABRSL33210D ..... 27	ABRSP29200H ..... 26	ABRSY77210 ..... 29
ABRSL33240 ..... 27	ABRSP33111 ..... 26	ABRTP-8120-C ..... 42
ABRSL33241 ..... 27	ABRSP33111D ..... 26	ABRTS12001-LF ..... 29
ABRSL33241D ..... 27	ABRSPM-100 ..... 42	ABRTS12002-LF ..... 29
ABRSL33242 ..... 27	ABRSPM-200 ..... 42	ABRTS12007-LF ..... 29
ABRSL33242D ..... 27	ABRSPRAY-ESC ..... 37	ABRTS12008-LF ..... 29
ABRSL33243 ..... 27	ABRSPRAY-HOSE ..... 37	ABRTS12009-LF ..... 29
ABRSL33243D ..... 27	ABRSPRAY-NOZZLE ..... 37	ABRTS12010-LF ..... 29
ABRSL33245 ..... 27	ABRSV21961 ..... 24	ABRTS12013-LF ..... 29



# Index by Part Number



ABRTS12014-LF .....	29	ABRUN33512 .....	31
ABRTS12015-LF .....	29	ABRUN33513D.....	31
ABRTS12016-LF .....	29	ABRUN33530 .....	31
ABRTS32953.....	29	ABRUN33531 .....	31
ABRTS32953D .....	30	ABRUN33532 .....	31
ABRTS32954.....	30	ABRUN50441 .....	31
ABRTS33410.....	30	ABRUN50442 .....	31
ABRTS33410C .....	30	ABRUN50443 .....	31
ABRTS33410H .....	30	ABRVA12241.....	31
ABRTS77178C .....	30	ABRVA12246.....	31
ABRTS77178H .....	30	ABRVA12247 .....	32
ABRTS77190C .....	30	ABRVA12248.....	32
ABRTS77190H .....	30	ABRVA12249.....	32
ABRTSKIT-VB-LF.....	30	ABRVA33810.....	32
ABRUN12101-LF.....	30	ABRVA33811 .....	32
ABRUN12102-LF.....	30	ABRVA404-15.....	32
ABRUN12156-LF .....	30	ABRVA404-21.....	32
ABRUN12157-LF.....	30	ABRVA408-01.....	32
ABRUN22109 .....	30	ABRVA408-02.....	32
ABRUN22110 .....	30	ABRVA704-20-1 .....	32
ABRUN22111 .....	30	ABRVA7408-01BNC .....	32
ABRUN22112 .....	30	ABRVA7408-01BNH .....	32
ABRUN22113 .....	30	ABRVA-KIT1 .....	32
ABRUN22117 .....	30	ABRWF32061 .....	32
ABRUN22119 .....	31	FLAPBOX .....	41
ABRUN33510 .....	31	113740 .....	42
ABRUN33510D.....	31	LF124620.....	37
ABRUN33510DA .....	31	LF124640.....	37
ABRUN33511 .....	31		

# Index Button Cross Reference

Handle	Hot Button	Cold Button	Diverter Button
AM33051	PP77151H	PP77151C	
AM33051D			PP77151D
AS32100	AS77103H	AS77103C	
AS32101	AS77103H	AS77103C	
AS32101D			AS77103D
AS32110	AS77104H	AS77104C	
AS32140	FA77101H	FA77101C	
AS32140D			FA77101D
AS32141	FA77101H	FA77101C	
AS32170	FA77102H	FA77102C	
AS32170D			FA77102D
AS32171	FA77102H	FA77102C	
AS32183	FA77102H	FA77102C	
AS32183D			FA77102D
AS32186	ABRAS77115H	ABRAS77115C	
AS32188	ABRAS77179H	ABRAS77179C	
AS32188D			ABRAS77179D
BR33651	ABRAS77179H	ABRAS77179C	
BR33651D			ABRAS77179D
CR32335	CR77121H	CR77121C	
CR32335D			CR77121D
DE404-01WA	DE7404-01		
FA32235	FA77161H	FA77161C	FA77161D
FA32245	FA77101H	FA77101C	FA77101D
FA32266	FA77116H	FA77116C	FA77116D
FA32267CP	FA77116H	FA77116C	FA77116D
FA32267PB	139740-PB	139670-PB	
FA32410	FA77101H	FA77101C	FA77101D
FA32480	AS77103H	AS77103C	AS77103D
FA32801	FA77151H	FA77151C	FA77151D
FA32802	FA77151H	FA77151C	FA77151D
FA33780	SA77162H	SA77162C	SA77162D

# Index Button Cross Reference



Handle	Hot Button	Cold Button	Diverter Button
FA408-10	SA77162H	SA77162C	SA77162D
FA408-10L	FA77112H	FA77112C	FA77112D
FA408-10S	FA77112H	FA77112C	FA77112D
GE32500	GE77122H	GE77122C	
GE32500D			GE77122D
GE32501	GE77122H	GE77122C	
GE32501D			GE77122D
GE32510	GE77122H	GE77122C	
GE32541	FA77101H	FA77101C	
GE32541D	FA77101H	FA77101C	FA77101D
HA32646	HA77177H	HA77177C	
HA32646D			HA77177D
HA32647	HA77176H	HA77176C	
KO32640	KO77131H	KO77131C	
KO32641	KO77131H	KO77131C	
KO32641D			KO77131D
NI408-14	FA77112H	FA77112C	
NI408-14D			FA77112D
PP32800	PP77151H	PP77151C	
PP32800D			PP77151D
PP32803	PP77152H	PP77152C	
PP32803D			PP77152D
PP32850D			PP77155D
PP32870	FA77101H	FA77101C	
PP32870D			FA77101D
PP32880	PP77155H	PP77155C	PP77155D
PP32881	PP77151H	PP77151C	
PP32883	PP77152H	PP77152C	
PP32883D			PP77152D
PP404-09	PP704-09-1		
PP404-23L	PP704-09-1		
PP408-17	CR77121H	CR77121C	

To Order Call: 1.800.767.5552 . Fax: 1.800.886.9831



# Index Button Cross Reference

Handle	Hot Button	Cold Button	Diverter Button
PP408-17D			CR77121D
PP408-19	CR77121H	CR77121C	
PP408-20	FA77101H	FA77101C	FA77101D
SA33030	SA77162H	SA77162C	
SA33030D			SA77162D
SA33031	SA77162H	SA77162C	
SA33031D			SA77162D
SA33033	SA77162H	SA77162C	
SL32890	FA77101H	FA77101C	
SL32890D			FA77101D
SL33210	SL77171H	SL77171C	
SL33210D			SL77171D
SL33242	SL77171H	SL77171C	
SL33242D			SL77171D
SL33243	SL77172H	SL77172C	
SL33243D			SL77172D
SL408-11	SL77172H	SL77172C	
SL408-11D			SL77172D
SL408-44	SL77172H	SL77172C	
SL408-44D			SL77172D
SP33111	FA77101H	FA77101C	
SP33111D			FA77101D
SY37210	SY77210		
TS32954	TS77178H	TS77178C	
VA12248	VA704-20-1		
VA408-01	VA7408-01BNC	VA7408-01BNH	
VA408-02	VA7408-01BNC	VA7408-01BNH	